

2ND ANNUAL

RIVERSIDE ANGUS

ANGUS BULL & FEMALE SALE

TERRY & TANYA STIGINGS & FAMILY

SELLING:

- 21 BLACK ANGUS
YEARLING BULLS
- 2 BLACK ANGUS
2-YEAR OLD BULLS
- 8 BLACK ANGUS
OPEN HEIFERS
- 15 RED ANGUS
YEARLING BULLS

WITH GUEST CONSIGNOR:

DERSTA FARM LTD.

DEREK & STACEY MATHON & FAMILY



MONDAY APRIL 13, 2020 ■ 1PM
INNISFAIL AUCTION MART

RIVERSIDE ANGUS

2ND ANNUAL RIVERSIDE ANGUS BULL & FEMALE SALE WITH GUESTS DERSTA FARM LTD.

Monday April 13, 2020 at 1:00 PM
Innisfail Auction Mart, Innisfail, AB

OFFERING: 46 LOTS

- 21 Black Angus Yearling Bulls
- 2 Black Angus 2-Year Old Bulls
- 8 Black Angus Open Heifers
- 15 Red Angus Yearling Bulls

Sale Staff:

Dan Skeels, Auctioneer (403) 783-1217
Craig Flewelling, Ringman (403) 556-0515
Kyle Daines, Ringman (403) 598-0311
Mark Holowaychuk, OBI (403) 896-4990
Roger Peters, OBI (403) 828-9815
Mark Shologan, DLMS (780) 699-5082
Innisfail Auction Mart (403) 227-3166
Danny Daines (403) 391-0580
Mark Daines (403) 350-0200
Duane Daines (403) 358-4971

Livestock Insurance Rep:

Craig Flewelling, Stockmen's Insurance.....(403) 556-0515

Special Reps:

Brian Good, CAA Field Rep

Can't make it to the sale?
Internet Bidding Available.

To view this sale visit www.dlms.ca, Fill out the registration form located under registration and sign-up for your free user account and select a username and password.

BIDDERS - To be approved as a bidder, Log in to dlms.ca and click BUYER APPROVAL tab, select the sale you are interested in bidding at and click sign up.

For more information

Call DLMS Reps:

Whitney Bosovich 780.991-3025

Mark Shologan 780.699.5082

DLMS
www.dlms.ca

RIVERSIDE ANGUS

Terry & Tanya Stigings & Family
Red Deer County, AB

Terry's Cell (403) 348-1962

Tanya's Cell (403) 304-6772

Curtis & Candice Sharp (403) 391-2117

DERSTA FARM LTD.

Derek & Stacey Mathon & Family
Red Deer County, AB

Home (403) 755-6304

Derek's Cell (403) 877-0479

Stacey's Cell (403) 506-1473



OBI LIVESTOCK LTD.

Mark Holowaychuk (403) 896-4990

Roger Peters (403) 828-9815

o.b.i@shaw.ca

www.cattlemanagement.ca

SALE DAY PHONES: Mark Holowaychuk, OBI: (403) 896-4990 ▪ Roger Peters, OBI: (403) 828-9815
Innisfail Auction Mart: (403) 227-3166 ▪ Terry Stigings (403) 348-1962 ▪ Tanya Stigings (403) 304-6772
Derek Mathon (403) 877-0479 ▪ Stacey Mathon (403) 506-1473

View the catalogue online at: www.cattlemanagement.ca

RIVERSIDE ANGUS

WELCOME TO THE 2ND ANNUAL RIVERSIDE ANGUS BULL SALE

2019 was a crazy year beginning with a record cold snap last February during calving, then having to purchase feed to get us through until the grass was ready and a very trying fall. We had an exciting summer starting with our youngest Logan, graduating from high school. It was a great weekend spent with family and friends. Once we were done haying Terry and I along with our good friends Ryan And Teresa Dodd experienced the trip of a lifetime which saw us travel to South Africa where the guys hunted for 5 days and us girls relaxed at the lodge, then we spent 5 days in Cape Town and surrounding area travelling around enjoying the sights.

We were very fortunate this year to have had a bumper crop of silage, as well as our corn crop doing well this past summer, with the commercial cows still grazing it.

Terry and I have fed the bulls somewhat differently this year, I have always wanted to pail feed the bulls some of their grain in hopes that it would help keep them quiet and easy to work with, but this year we made the decision to feed them a total mixed ration of barley and barley/pea blend silage as well as a custom made mineral package made specifically for our herd, realizing feeding the bulls this way is much healthier for them. This has worked great and I didn't have to worry the bulls are still quiet and easy to handle.

We are excited about this year's offering of Yearlings. While evaluating the calves in the fall we took into consideration: confirmation, age, and wean weights, with that we chose what we felt were the top 25 bulls. They are an extremely uniformed group with tremendous rib lots of length and moving on sound feet and legs.

Something new at Riverside was the purchase of a few Red Angus cows by our son Logan we will have 2 red yearlings on offer this year. The bulls will be semen tested and vaccinated prior to the sale again this year with a full guarantee.

Again, this year Dersta Farms will be joining us again with a strong offering of Red Angus Yearlings. Derek and Stacey have an outstanding herd of Red Angus Cows

To our friends and family who our available to help us at a moment's notice and continue to promote our business, thank you.

Feel free to stop in anytime to view the bulls prior to the sale the coffee is always on beer is always cold.

Thank you & see you all sale day!

*Terry, Tanya, Taylor, Kaylee & Logan Stigings
Curtis, Candice, Brody & Kenzie Sharpe*



**TERRY & TANYA STIGINGS & FAMILY
RED DEER COUNTY, AB**

TERRY'S CELL (403) 348-1962

TANYA'S CELL (403) 304-6772

CURTIS & CANDICE SHARP (403) 391-2117

Visit us online: riversideangus.net

OBI Welcome

I am very pleased to welcome to you to the **2nd Annual Riverside Angus & Dersta Farms Bull & Female Sale.**

Riverside Angus continue to run a family operation with everyone lending a hand in the ongoing day to day operations. The cow herd consists of hard-working females seeked out from dispersal sales and production and these cornerstone brood cows are the foundation females at home and many daughters are now in production. The bulls are fed in a large pen to enhance longevity and durability with a lot of exercise. The females offered for this sale were hand selected from their cornerstone herdsires and they will be females that go to your herd and do a very good job raising calves for you down the road.

Dersta Farms is also a family run operation that continued to seek top end genetics for their Red Angus program. They have brought to town 13 Red Angus yearling bulls with a lot of calving ease built into them. A feature that is very important nowadays. The cow herd is also a hard working one that is one to take a look at down the road. Young breeders that have so much positivity in the Angus Industry.

If you need any assistance, please feel free to call myself, Roger or any of the consignors directly and we will be glad to help you.

Mark Holowaychuk, OBI

Riverside Reference Sires

South Shadow Consensus 132B

SSA 132B JANUARY 27 2014 #1823080

KMK ALLIANCE 6595 187
CONNEALY CONSENSUS
BLINDA OF CONANGA 004
S: CONNEALY CONSENSUS 7229
WOODHILL ADMIRAL 77K
BLUE LILLY OF CONANGA 16
BLUE CASH OF CONANGA 6020

B/R NEW DESIGN 036
B/R NEW FRONTIER 095
WHITE FENCE PRIDE HI
D: SSAP JOYCE 18R
E8B 1483 SCOTCHMAN 543
SOUTH SHADOW JOYCE 25K
SOUTH SHADOW JOYCE 9F

ADJUSTED			EPD'S						
BW	WW	YW	BW	WW	YW	MILK	TM	CE	MCE
87	682	1330	+2.1	+56	+116	+23	+51	+6.0	+9.0

Is one of our current walking herd sires. We chose this big soggy bull to add pounds to our calves with an ADG of 4.05 pounds. Consensus yearling EPD is +108 which puts him in the top 4 percent of the breed for yearling weights and milk +21. Both his dam and granddam are elite cows in the south shadow herd.



South Shadow Foresight 85B

SSA 85B JANUARY 20 2014 #1823062

PAPA OPTIMA 9818
PAPA FORTE 1921
PAPA ENVIDIOUS BLACKBIRD 8832
S: WOODHILL FORESIGHT
BON VIEW BANDO 598
BON VIEW GAMMER 85
BON VIEW GAMMER 233

STEVENSON RAINMAKER 6306
CUDLOBE RAINMAKER 39K
CUDLOBE KYMA 18H
D: SOUTH SHADOW RUBY 12N
SOUTH SHADOW OVER DRIVE 27J
SOUTH SHADOW RUBY 63L
EARLY SUNSET RUBY 54G

ADJUSTED			EPD'S						
BW	WW	YW	BW	WW	YW	MILK	TM	CE	MCE
89	706	1202	+1.5	+37	+64	+25	+44	+6.0	+10.0

Foresight is a very smooth made bull. His dam is 11 years old who is a deep bodied feminine cow with a great udder. Foresight is a powerful maternal carcass sire who has muscle and volume through out.

South Shadow Upward 49D

SSA 49D JANUARY 13 2016 #1941355

CONNEALY LEAD ON
CONNEALY ONWARD
ALTUNE OF CONANGA 6104
S: SITZ UPWARD 307R
SITZ VALUE 7097
SITZ HENRIETTA PRIDE 81M
SITZ HENRIETTA PRIDE 1370

S A F FOCUS OF E R
MYTTY IN FOCUS
MYTTY COUNTLESS 906
D: SSA ERROLLINE 814U
F A R KRUGERRAND 410H
SSAP ERROLLINE 1R
SOUTH SHADOW ERROLLINE 11F

ADJUSTED			EPD'S						
BW	WW	YW	BW	WW	YW	MILK	TM	CE	MCE
89	636	1129	+2.0	+56	+100	+26	+54	+6.0	+10.0

Upward is a powerful deep bodied bull, boasting a yearling EPD of + 112 which is the top 3 percent in the breed for yearling weight and milk is + 25 . Upward comes from a very maternal cow family with his dam being designated elite. We are very excited about the upward calves. We have calved our first upward daughters this spring. They are very docile and excellent mothers we are very pleased with each one.

Riverside Herdsire Prospects

Riverside Consensus 92G

TTS 92G MARCH 13 2019 #2094176



CONNEALY CONSENSUS
CONNEALY CONSENSUS 7229
BLUE LILLY OF CONANGA 16
S: SOUTH SHADOW CONSENSUS 132B
B/R NEW FRONTIER 095
SSAP JOYCE 18R
SOUTH SHADOW JOYCE 25K

B S S LIMITED DESIGN
HAPPYVALE NEW DESIGN 36N
HAPPYVALE T. NEONIA 131L
D: HAPPYVALE LADY 92S
MVF STOCKMAN 122H
HAPPYVALE LADY 69P
VIKING BANDY LADY 157F

ADJUSTED			EPD'S						
BW	WW	YW	BW	WW	YW	MILK	TM	CE	MCE
87	795	1189	+2.6	+46	+87	+23	+46	+3.0	+6.0

A thick topped and big hipped bull that has a rugged herd bull appearance.



Riverside Consensus 11G

TTS 11G FEBRUARY 12 2019 #2094146



CONNEALY CONSENSUS
CONNEALY CONSENSUS 7229
BLUE LILLY OF CONANGA 16
S: SOUTH SHADOW CONSENSUS 132B
B/R NEW FRONTIER 095
SSAP JOYCE 18R
SOUTH SHADOW JOYCE 25K

HF KODIAK 5R
HF TIGER 5T
HF ECHO 84R
D: RIVERSIDE TIBBIE 11Y
RIVERCREST GRID MAKER 15P
RIVERSIDE G M TIBBIE 1T
RIVERCREST BLACKCAP CSP 71N

ADJUSTED			EPD'S						
BW	WW	YW	BW	WW	YW	MILK	TM	CE	MCE
89	836	-	+2.6	+52	+105	+22	+48	+5.0	+7.0

11G has been a powerhouse all year, thickness volume and pounds. 11G was our heaviest bull at weaning and continues to out perform his pen mates.



Riverside Consensus 140G

TCS 140G MARCH 3 2019 #2094198



CONNEALY CONSENSUS
CONNEALY CONSENSUS 7229
BLUE LILLY OF CONANGA 16
S: SOUTH SHADOW CONSENSUS 132B
B/R NEW FRONTIER 095
SSAP JOYCE 18R
SOUTH SHADOW JOYCE 25K

S A V NET WORTH 4200
MVF NET WORTH 134T
MVF TIBBIE 110P
D: RIVERSIDE ERICA 140A
JUSTAMERE 2466 LAIRD 469S
RIVERSIDE ERICA 70X
R.F. ERICA 7P

ADJUSTED			EPD'S						
BW	WW	YW	BW	WW	YW	MILK	TM	CE	MCE
89	723	1210	+3.3	+49	+96	+24	+49	+3.0	+9.5

140G is a deep bodied bull with thickness, muscle and massive volume. We used a full brother of 140 on our commercial heifers 3 years ago he worked great. 2 years ago, a Thunder brother was purchased by Randy and Lorrissa Stigings. This guy catches your eye whenever you are in the pen.

Riverside Consensus 53G

TTS 53G MARCH 7 2019 #2094173



CONNEALY CONSENSUS
CONNEALY CONSENSUS 7229
BLUE LILLY OF CONANGA 16
S: SOUTH SHADOW CONSENSUS 132B D: RIVERSIDE PRIDELLA 53X
B/R NEW FRONTIER 095 S A F CONNECTION
SSAP JOYCE 18R RIVERCREST PRIDELLA 2P
SOUTH SHADOW JOYCE 25K CAYMEN PRIDELLA 32'02

ADJUSTED			EPD'S							
BW	WW	YW	BW	WW	YW	MILK	TM	CE	MCE	
84	758	1171	+3.0	+51	+98	+22	+48	+1.0	+9.0	

A full brother to the 2018 Champion Spring heifer calf at FarmFair. This bull has natural thickness throughout, will and style and pounds to your calf crop.



RIVERSIDE
PRIDELLA 253F
FULL SISTER
TO LOT 4

Riverside Consensus 20G

TCS 20G FEBRUARY 24 2019 #2094197



CONNEALY CONSENSUS
CONNEALY CONSENSUS 7229
BLUE LILLY OF CONANGA 16
S: SOUTH SHADOW CONSENSUS 132B D: RIVERSIDE ROSEWALL 20Z
B/R NEW FRONTIER 095 JUSTAMERE 2466 LAIRD 469S
SSAP JOYCE 18R 1260337 RIVERSIDE ROSEWALL 20U
SOUTH SHADOW JOYCE 25K CROWFOOT ROSEWALL 1810L

ADJUSTED			EPD'S							
BW	WW	YW	BW	WW	YW	MILK	TM	CE	MCE	
86	692	1138	+2.7	+48	+96	+26	+50	+4.0	+8.0	

This no miss Upgrade daughter has done it again. 20G's dam Riverside Rosewall 20Z is a beautiful udder female she is the granddam of 8G, and the great granddam to 83G. We are very proud of this cow family.

Riverside Upward 123G

TCS 123G MARCH 7 2019 #2094201



CONNEALY ONWARD
SITZ UPWARD 307R
SITZ HENRIETTA PRIDE 81M
S: SOUTH SHADOW UPWARD 49D D: RIVERSIDE ENCHANTRESS 178D
MYTTY IN FOCUS RIVERSIDE PREDOMINANT 30U
SSA ERROLLINE 814U RIVERSIDE ENCHANTRESS 78X
SSAP ERROLLINE 1R RIVERSIDE ENCHANTRESS 23U

ADJUSTED			EPD'S							
BW	WW	YW	BW	WW	YW	MILK	TM	CE	MCE	
84	680	-	+2.5	+62	+109	+26	+57	+5.5	+10.0	

A real favorite in the Upward Sire Group, who has mass, thickness and depth packed into a moderate frame.



RIVERSIDE UPWARD 23G - LOT 8

Riverside Consensus 17G

TCS 17G MARCH 4 2019 #2094200



CONNEALY CONSENSUS
CONNEALY CONSENSUS 7229
BLUE LILLY OF CONANGA 16
S: SOUTH SHADOW CONSENSUS 132B D: RIVERSIDE ERICA 17U
B/R NEW FRONTIER 095 DURLowe MAGIC 40J
SSAP JOYCE 18R ERICA OF RANNOCH 630L
SOUTH SHADOW JOYCE 25K ERICA OF RANNOCH 600J

ADJUSTED			EPD'S							
BW	WW	YW	BW	WW	YW	MILK	TM	CE	MCE	
87	720	1149	+2.7	+50	+96	+21	+46	+3.0	+8.5	

A clean fronted, long, thick. Deep and quiet bull. He comes with lots of hair and lots of style. His dam has produced some outstanding females as well as bulls who have served as herd sires in many herds including here at Riverside.

Riverside Consensus 32G

TCS 32G FEBRUARY 12 2019 #2094190



CONNEALY CONSENSUS
CONNEALY CONSENSUS 7229
BLUE LILLY OF CONANGA 16
S: SOUTH SHADOW CONSENSUS 132B D: RIVERSIDE ERICA 32Z
B/R NEW FRONTIER 095 LORENZ DATELINE 16P
SSAP JOYCE 18R RIVERSIDE ERICA 17U
SOUTH SHADOW JOYCE 25K ERICA OF RANNOCH 630L

ADJUSTED			EPD'S							
BW	WW	YW	BW	WW	YW	MILK	TM	CE	MCE	
85	739	-	+2.3	+48	+99	+22	+46	+4.5	+9.5	

32G is another great Consensus son with lots of hair, great muscle definition. 32G's full brother sold in last year's sale. All the Consensus sons have great dispositions and are easy to work with.

Riverside Upward 178G

TTS 178G MARCH 7 2019 #2094172



CONNEALY ONWARD
SITZ UPWARD 307R
SITZ HENRIETTA PRIDE 81M
S: SOUTH SHADOW UPWARD 49D
MYTTY IN FOCUS
SSA ERROLLINE 814U
SSAP ERROLLINE 1R

CONNEALY THUNDER
NORTHERN VIEW THUNDER 72X
NORTHERN VIEW LUCY 86U
D: RIVERSIDE INA 178B
JUSTAMERE 2466 LAIRD 469S
RIVERSIDE DIANNA 78X
RIVERSIDE DIVERSITY 8T

ADJUSTED			EPD'S						
BW	WW	YW	BW	WW	YW	MILK	TM	CE	MCE
84	708	-	+2.6	+49	+92	+21	+46	+2.0	+9.5

From the very good Dianna 78X grandam, a nice moderate BW here with a good hair coat.

Riverside Upward 63G

TTS 63G MARCH 1 2019 #2094168



CONNEALY ONWARD
SITZ UPWARD 307R
SITZ HENRIETTA PRIDE 81M
S: SOUTH SHADOW UPWARD 49D
MYTTY IN FOCUS
SSA ERROLLINE 814U
SSAP ERROLLINE 1R

S A V NET WORTH 4200
MV F NET WORTH 134T
MV F TIBBIE 110P
D: RIVERSIDE ERICA 63A
LORENZ DATELINE 16P
RIVERSIDE ERICA 36W
RIVERSIDE ERICA 6R

ADJUSTED			EPD'S						
BW	WW	YW	BW	WW	YW	MILK	TM	CE	MCE
86	702	1210	+2.3	+49	+91	+25	+50	+7.0	+11.5

63G carries a distinguished herd bull presence and carries true angus breed character. I am confident that 63G will work on heifers. A favorite of mine in the bull pen.



RIVERSIDE ERICA 63A
DAM OF LOT 10

RIVERSIDE
UPWARD 63G
LOT 10
(BOTH PICS)



Riverside Upward 8G

TCS 8G APRIL 8 2019 #2094207



CONNEALY ONWARD
SITZ UPWARD 307R
SITZ HENRIETTA PRIDE 81M
S: SOUTH SHADOW UPWARD 49D
MYTTY IN FOCUS
SSA ERROLLINE 814U
SSAP ERROLLINE 1R

S A V FINAL ANSWER 0035
K C F BENNETT ABSOLUTE
THOMAS MISS LUCY 5152
D: RIVERSIDE ROSIE 8C
STYLES UPGRADE J59
RIVERSIDE ROSEWALL 20Z
RIVERSIDE ROSEWALL 20U

ADJUSTED			EPD'S						
BW	WW	YW	BW	WW	YW	MILK	TM	CE	MCE
84	704	1051	+1.7	+53	+96	+26	+53	+5.5	+8.0

The youngest bull in our offering, a very stylish moderate framed Upward son. An excellent heifer bull prospect.



Riverside Upward 1G

TTS 1G MARCH 12 2019 #2094175

12

CONNEALY ONWARD
SITZ UPWARD 307R
SITZ HENRIETTA PRIDE 81M
S: SOUTH SHADOW UPWARD 49D
MYTTY IN FOCUS
SSA ERROLLINE 814U
SSAP ERROLLINE 1R

S A V NET WORTH 4200
MVF NET WORTH 134T
MVF TIBBIE 110P
D: RIVERSIDE TIBBIE 1Y
JUSTAMERE 2466 LAIRD 469S
RIVERSIDE BLACKCAP 1U
RIVERCREST BLACKCAP CSP 71N

ADJUSTED			EPD'S						
BW	WW	YW	BW	WW	YW	MILK	TM	CE	MCE
82	617	1196	+1.8	+47	+86	+21	+45	+5.0	+11.0

1G is a very strong complete made bull that carries his depth from end to end. He is smooth shouldered with an attractive sound profile making him very appealing.

Riverside Upward 138G

TTS 138G FEBRUARY 15 2019 #2134234

13

CONNEALY ONWARD
SITZ UPWARD 307R
SITZ HENRIETTA PRIDE 81M
S: SOUTH SHADOW UPWARD 49D
MYTTY IN FOCUS
SSA ERROLLINE 814U
SSAP ERROLLINE 1R

CONNEALY THUNDER
NORTHERN VIEW THUNDER 72X
NORTHERN VIEW LUCY 86U
D: RIVERSIDE INA 138D
RIVERSIDE PREDOMINANT 30U
RIVERSIDE INA 38X
RIVERSIDE INA 18U

ADJUSTED			EPD'S						
BW	WW	YW	BW	WW	YW	MILK	TM	CE	MCE
84	698	1232	+3.0	+54	+99	+23	+50	+3.5	+9.5

A long shapely bull with style and thickness throughout. Another bull whose pedigree goes back to Riverside Ina 18U. If you are striving to keep replacement heifers this is a bull that will do that.

Riverside Upward 18G

TTS 18G MARCH 2 2019 #2094169

14

CONNEALY ONWARD
SITZ UPWARD 307R
SITZ HENRIETTA PRIDE 81M
S: SOUTH SHADOW UPWARD 49D
MYTTY IN FOCUS
SSA ERROLLINE 814U
SSAP ERROLLINE 1R

VERMILION DATELINE 7078
EBON HILL 7080 DATELINE 68'06
EBON HILL LAVENDER LADY 453'97
D: RIVERSIDE INA 18U
EBON HILL BLACK DESIGN 41'03
EBON HILL INA 267'05
EBON HILL INA 367'02

ADJUSTED			EPD'S						
BW	WW	YW	BW	WW	YW	MILK	TM	CE	MCE
89	857	1326	+3.8	+58	+101	+26	+55	+2.0	+7.5

This bull has been a favorite since the day he was born. Born to our most maternal cow family here at Riverside. 18G is a definite herd bull prospect, with definition shape and volume of his hip is one of his strongest features he is long with a beautiful neck extension all this is set upon smooth clean shoulders and excellent leg structure. I am confident that 18G will give you top quality steers in the fall or replacements for your heifer pen. He is halter broke as he was a member of our show string last fall. His dam was designated an elite/premier dam by the CAA in 2017.



RIVERSIDE
UPWARD 18G
LOT 14



RIVERSIDE INA 18U
DAM OF LOT 14

Riverside Absolute 169G

TCS 1696 MARCH 31 2019 #2094205



S A V FINAL ANSWER 0035
K C F BENNETT ABSOLUTE
THOMAS MISS LUCY 5152
S: RIVERSIDE ABSOLUTE 115C
MVF NET WORTH 134T
RIVERSIDE ERICA 115A
ERICA OF RANNOCH 8P

CONNEALY THUNDER
NORTHERN VIEW THUNDER 72X
NORTHERN VIEW LUCY 86U
D: RIVERSIDE ERICA 69D
MVF NET WORTH 134T
RIVERSIDE ERICA 4Z
R.F. ERICA 5P

ADJUSTED			EPD'S						
BW	WW	YW	BW	WW	YW	MILK	TM	CE	MCE
81	845	1251	+1.9	+48	+101	+20	+44	+6.0	+10.0

Our only Absolute son in the sale this year, he is a genuine beef bull with thickness, muscle and volume in a high-performance package.



Riverside Active Duty 83G

TCS 836 JANUARY 30 2019 #2105778



R B ACTIVE DUTY 0010X
MINBURN ACTIVE DUTY 48B
MINBURN LASSIE 134Z
S: RIVERSIDE ACTIVE DUTY 762E
KBJ ABOVE STANDARD 78X
DREAM MAKER BLACKBIRD 753Z
DREAM MAKERS BLACKBIRD 737X
CONNEALY CONSENSUS 7229
SOUTH SHADOW CONSENSUS 132B
SSAP JOYCE 18R
D: RIVERSIDE ROSIE 83E
K C F BENNETT ABSOLUTE
RIVERSIDE ROSIE 8C
RIVERSIDE ROSEWALL 20Z

ADJUSTED			EPD'S						
BW	WW	YW	BW	WW	YW	MILK	TM	CE	MCE
81	743	1290	+2.8	+51	+91	+23	+49	-	-

83G represents the first calf crop out of Riverside Active Duty. He is moderate in his frame score with tremendous spring of rib and natural width through out. He is smooth shouldered square hipped and sound footed.

Riverside Foresight 153G

TTS 1536 FEBRUARY 26 2019 #2094164



PAPA FORTE 1921
WOODHILL FORESIGHT
BON VIEW GAMMER 85
S: SOUTH SHADOW FORESIGHT 85B
CUDLOBE RAINMAKER 39K
SOUTH SHADOW RUBY 12N
SOUTH SHADOW RUBY 63L
CONNEALY THUNDER
NORTHERN VIEW THUNDER 72X
NORTHERN VIEW LUCY 86U
D: RIVERSIDE PRIDELLA 153B
JUSTAMERE 2466 LAIRD 469S
RIVERSIDE PRIDELLA 53X
RIVERCREST PRIDELLA 2P

ADJUSTED			EPD'S						
BW	WW	YW	BW	WW	YW	MILK	TM	CE	MCE
86	843	1231	+2.7	+42	+78	+25	+46	+3.0	+10.0

153G is an attractive long bodied Foresight son, with structural balance and great haircoat.

Riverside Foresightg 31G

TTS 316 FEBRUARY 27 2019 #2094165



PAPA FORTE 1921
WOODHILL FORESIGHT
BON VIEW GAMMER 85
S: SOUTH SHADOW FORESIGHT 85B
CUDLOBE RAINMAKER 39K
SOUTH SHADOW RUBY 12N
SOUTH SHADOW RUBY 63L
CONNEALY THUNDER
NORTHERN VIEW THUNDER 72X
NORTHERN VIEW LUCY 86U
D: RIVERSIDE BLACKCAP 31B
BELVIN EXTRA YARDS 85'00
RIVERCREST BLACKCAP CSP 31P
RIVERCREST BLACKCAP CSP 11J

ADJUSTED			EPD'S						
BW	WW	YW	BW	WW	YW	MILK	TM	CE	MCE
89	607	-	+2.7	+39	+68	+23	+43	+4.0	+9.5

A clean fronted Foresight son

Riverside Foresight 200G

TCS 200G MARCH 12 2019 #2094204



PAPA FORTE 1921
WOODHILL FORESIGHT
BON VIEW GAMMER 85
S: SOUTH SHADOW FORESIGHT 85B
CUDLOBE RAINMAKER 39K
SOUTH SHADOW RUBY 12N
SOUTH SHADOW RUBY 63L

LORENZ DATELINE 16P
RIVERSIDE DATELINE 92W
HAPPYVALE LADY 92S
D: RIVERSIDE ERICA 2Z
DURLOWE MAGIC 40J
ERICA OF RANNOCH 630L
ERICA OF RANNOCH 600J

ADJUSTED			EPD'S						
BW	WW	YW	BW	WW	YW	MILK	TM	CE	MCE
87	707	1163	+2.8	+34	+61	+18	+35	+1.5	+7.5

200G is a sound made Foresight son.

Riverside Foresight 72G

TTS 72G FEBRUARY 12 2019 #2094145



PAPA FORTE 1921
WOODHILL FORESIGHT
BON VIEW GAMMER 85
S: SOUTH SHADOW FORESIGHT 85B
CUDLOBE RAINMAKER 39K
SOUTH SHADOW RUBY 12N
SOUTH SHADOW RUBY 63L

S A V NET WORTH 4200
MVF NET WORTH 134T
MVF TIBBIE 110P
D: RIVERSIDE BLACKCAP 72Z
RIVERCREST GRID MAKER 15P
RIVERSIDE G M 2T
RIVERCREST BLACKCAP CSP 37K

ADJUSTED			EPD'S						
BW	WW	YW	BW	WW	YW	MILK	TM	CE	MCE
86	616	1087	+2.8	+37	+69	+21	+40	+5.0	+11.0

A stout, extra thick, muscular heavy quartered bull.

Riverside Foresight 129G

TCS 129G FEBRUARY 16 2019 #2094193



PAPA FORTE 1921
WOODHILL FORESIGHT
BON VIEW GAMMER 85
S: SOUTH SHADOW FORESIGHT 85B
CUDLOBE RAINMAKER 39K
SOUTH SHADOW RUBY 12N
SOUTH SHADOW RUBY 63L

MYTTY IN FOCUS
RIVERSIDE IN FOCUS 39Y
RIVERSIDE LEVI 39W
D: RIVERSIDE EMMA 119A
RIVERSIDE DATELINE 92W
RIVERSIDE EMMA 46Y
RIVERSIDE DATELINE EMMA 16S

ADJUSTED			EPD'S						
BW	WW	YW	BW	WW	YW	MILK	TM	CE	MCE
91	701	1156	+3.3	+41	+71	+21	+42	+4.0	+9.5

129G is a Foresight son with extra length, neck extension and an attractive muscle pattern. We have 2 sisters in the herd and they are beautiful heifers easy to handle.



RIVERSIDE FORESIGHT 72G - LOT 20





RED RIVERSIDE EYE SPY 17G
LOT 22

RED MAPLE RIDGE
ACRE EUGENIE
DAM OF LOT 22



Red Riverside Eye Spy 17G

TTS 17G APRIL 1 2019 #2117858

LAZY MC LOOKOUT 37U
RED LAZY MC EYE SPY 64Y
RED LAZY MC GOLD DESIGN 68U

S: RED LCF EYE SPY 16D

RED LAZY MC CC DETOUR 2W
RED TEDDY 5Z
RED RRAR TEDDY 26S

RED BAR-E-L DOUBLE DEUCE 198Y
RED WILBAR DOUBLE DEUCE 328B
RED WILBAR LANA 648S

D: RED MAPLE RIDGE ACRE EUGENIE

RED SIX MILE SAKIC 832S
RED MAPLE RIDGE ACRE EUGENIE25
RED MRAS EUGENIE 29Y

ADJUSTED			EPD'S						
BW	WW	YW	BW	WW	YW	MILK	TM	CE	MCE
84	-	-	+2.6	+39	+71	+22	+42	0.0	+4.0

17G is a very clean made bull. We were lucky enough to purchase is dam and granddam through the maple ridge acre dispersal they are both beautiful cows that are easy flesh hard working honest cows.

22



RED RIVERSIDE STRONGBAR 27G
LOT 23

RED DWAJO SUPERIOR 27E
DAM OF LOT 23



Red Riverside Strongbar 27G

TTS 27G FEBRUARY 11 2019 #2121417

RED TROTTERS STRONGHOLD 156
RED SPUR STRONGHOLD 217IC
RED SSR GRAVITY'S LEAGUE Y217

S: RED DWAJO STRONG BAR 11E

RED SVR BAR CODE 2K
RED DWAJO LUCY 73N
DWAJO LUCY 79K

RED U-2 RECKONING 149A
RED U-2 REGIMENT 376C
RED U-2 PINOLA 16DA

D: RED DWAJO SUPERIOR 27E

RED ANCHOR 1 ARMAGEDDON 63X
RED DWAJO SUPERIOR 8C
RED DWAJO SUPERIOR 62Z

ADJUSTED			EPD'S						
BW	WW	YW	BW	WW	YW	MILK	TM	CE	MCE
68	656	1171	-1.1	+32	+54	+23	+39	+4.0	+7.0

If you are looking for a sure-fire heifer bull, 27G is the bull. Just a 68, pound birth weight you don't have to worry about losing any sleep with this guy. His dam is a clean made Red U2 Reckoning granddaughter with a beautiful udder.

23



Riverside 2 Year Old Bulls

Riverside Foresight 10F

TTS 10F FEBRUARY 20 2018 #2056831



PAPA FORTE 1921
WOODHILL FORESIGHT
BON VIEW GAMMER 85
S: SOUTH SHADOW FORESIGHT 85B
CUDLOBE RAINMAKER 39K
SOUTH SHADOW RUBY 12N
SOUTH SHADOW RUBY 63L
D: RIVERSIDE DAISY 10U
MILLCREEK DIVERSITY
RIVERCREST MISS DAISY CSP 27N
HI DIAMOND MISS DAISY 7K

ADJUSTED			EPD'S						
BW	WW	YW	BW	WW	YW	MILK	TM	CE	MCE
86	724	1102	+3.3	+42	+71	+23	+44	+1.0	+9.0

A thick wide topped Foresight son. His Dam has produced several hard-working females in our herd including the dam of TTS 80F and dam to our other 2year old on offer.



RIVERSIDE FORESIGHT 10F - LOT 24

Riverside Foresight 80F

TTS 80F MARCH 15 2018 #2056850



PAPA FORTE 1921
WOODHILL FORESIGHT
BON VIEW GAMMER 85
S: SOUTH SHADOW FORESIGHT 85B
CUDLOBE RAINMAKER 39K
SOUTH SHADOW RUBY 12N
SOUTH SHADOW RUBY 63L
D: RIVERSIDE DANA 80X
JUSTAMERE 2466 LAIRD 469S
RIVERSIDE DAISY 10U
RIVERCREST MISS DAISY CSP 27N

ADJUSTED			EPD'S						
BW	WW	YW	BW	WW	YW	MILK	TM	CE	MCE
92	769	1122	+3.9	+46	+74	+25	+48	0.0	+8.0

A very complete bull, with style and eye appeal.



RIVERSIDE FORESIGHT 80F - LOT 25



Riverside Open Heifers Selling Choice

SELLING CHOICE LOT 26 & 27

Riverside Erica128G

TCS 1286 MARCH 12 2019 #2134447

26



RIVERSIDE ERICA128G - LOT 26

PAPA FORTE 1921
WOODHILL FORESIGHT
BON VIEW GAMMER 85
S: SOUTH SHADOW FORESIGHT 85B
CUDLOBE RAINMAKER 39K
SOUTH SHADOW RUBY 12N
SOUTH SHADOW RUBY 63L
S A V NET WORTH 4200
MVF NET WORTH 134T
MVF TIBBIE 110P
D: RIVERSIDE ERICA 28Z
LORENZ DATELINE 16P
RIVERSIDE ERICA 7T
R.F. ERICA 12M

ADJUSTED			EPD'S						
BW	WW	YW	BW	WW	YW	MILK	TM	CE	MCE
84	602	-	+1.4	+33	+64	+19	+36	+6.5	+11.0

A Foresight daughter whose dam is a moderate framed Net Worth. I am confident that 128G is going to have an excellent udder.

Riverside Blackcap 44G

TTS 44G FEBRUARY 11 2019 #2094144

27



RIVERSIDE BLACKCAP 44G - LOT 27

PAPA FORTE 1921
WOODHILL FORESIGHT
BON VIEW GAMMER 85
S: SOUTH SHADOW FORESIGHT 85B
CUDLOBE RAINMAKER 39K
SOUTH SHADOW RUBY 12N
SOUTH SHADOW RUBY 63L
LORENZ EQUALIZER 5S
RIVERSIDE EQUALIZER 3W
RIVERSIDE DATELINE BELLE 3S
D: RIVERSIDE BLACKCAP 44Y
LORENZ DATELINE 16P
RIVERSIDE BLACKCAP 24W
RIVERCREST BLACKCAP CSP 21K

ADJUSTED			EPD'S						
BW	WW	YW	BW	WW	YW	MILK	TM	CE	MCE
80	540	-	+1.2	+30	+48	+21	+36	+5.0	+10.5

This Foresight heifer is from another top cow family at Riverside, her dams Net Worth sister is doing amazing things for us two high selling bulls through our sale and this past fall her Consensus daughter placed 3rd overall in the intermediate heifer calf class.



RIVERSIDE ELLA 259G - LOT 28

SELLING CHOICE LOT 28 & 29

Riverside Ella 259G

TTS 259G FEBRUARY 10 2019 #2094143

28

JS GRIDIRON 5
SSA GRIDIRON 98Z
SSA AKITA 76X
S: SOUTH SHADOW GRIDIRON 99D
S A V 004 DENSITY 433G
SSA ERROLLINE 5Z
SSA ERROLLINE 916W
MYTTY IN FOCUS
RIVERSIDE IN FOCUS 39Y
RIVERSIDE LEVI 39W
D: RIVERSIDE ELLA 259D
MVF NET WORTH 134T
RIVERSIDE ELLA 159A
RIVERSIDE ELLA 9X

ADJUSTED			EPD'S						
BW	WW	YW	BW	WW	YW	MILK	TM	CE	MCE
79	578	-	+1.5	+41	+76	+20	+41	+7.0	+10.0

Possibly the softest made heifer in the sale, she is a very easy doing female. This cow family is doing great things for us, all the daughters are very productive females.

Riverside Blackcap 82G

TTS 82G FEBRUARY 19 2019 #2094150

29

JS GRIDIRON 5
SSA GRIDIRON 98Z
SSA AKITA 76X
S: SOUTH SHADOW GRIDIRON 99D
S A V 004 DENSITY 433G
SSA ERROLLINE 5Z
SSA ERROLLINE 916W
CONNEALY CONSENSUS 7229
SOUTH SHADOW CONSENSUS 132B
SSAP JOYCE 18R
D: RIVERSIDE BLACKCAP 182D
NORTHERN VIEW THUNDER 72X
RIVERSIDE BLACKCAP 82B
RIVERSIDE G M 2T

ADJUSTED			EPD'S						
BW	WW	YW	BW	WW	YW	MILK	TM	CE	MCE
82	598	-	+1.5	+43	+84	+22	+44	+9.0	+10.5

A fancy Grid Iron daughter, with extra volume and rib in this female.

SELLING CHOICE LOT 30 & 31

Riverside Tibbie 61G

TTS 61G MARCH 11 2019 #2094174



S A V FINAL ANSWER 0035
K C F BENNETT ABSOLUTE
THOMAS MISS LUCY 5152

CONNEALY THUNDER
NORTHERN VIEW THUNDER 72X
NORTHERN VIEW LUCY 86U

S: RIVERSIDE ABSOLUTE 115C

D: RIVERSIDE TIBBIE 61B

MVF NET WORTH 134T

RIVERCREST GRID MAKER 15P

RIVERSIDE ERICA 115A

RIVERSIDE G M TIBBIE 1T

ERICA OF RANNOCH 8P

RIVERCREST BLACKCAP CSP 71N

ADJUSTED

EPD'S

BW	WW	YW	BW	WW	YW	MILK	TM	CE	MCE
81	610	-	+1.8	+53	+104	+21	+48	+4.0	+9.0

A very feminine Foresight daughter.



RIVERSIDE TIBBIE 61G - LOT 30

Riverside Daisey 135G

TTS 125G MARCH 25 2019 #2094181



S A V FINAL ANSWER 0035
K C F BENNETT ABSOLUTE
THOMAS MISS LUCY 5152

S A V NET WORTH 4200
MVF NET WORTH 134T
MVF TIBBIE 110P

S: RIVERSIDE ABSOLUTE 115C

D: RIVERSIDE DAISEY 125B

MVF NET WORTH 134T

LORENZ DATELINE 16P

RIVERSIDE ERICA 115A

RIVERSIDE DAISY 25W

ERICA OF RANNOCH 8P

RIVERCREST DAISY CSP 36M

ADJUSTED

EPD'S

BW	WW	YW	BW	WW	YW	MILK	TM	CE	MCE
82	597	-	+1.2	+52	+100	+22	+42	+8.5	+10.5

We calved our 1st Absolute daughters this spring they have excellent dispositions, excellent udders they are all proving to be hard working mama cows.



RIVERSIDE DIVERSITY 81G - LOT 32

SELLING CHOICE LOT 32 & 33

Riverside Diversity 81G

TTS 128G FEBRUARY 17 2019 #2134235



R B ACTIVE DUTY 0010X
MINBURN ACTIVE DUTY 48B
MINBURN LASSIE 134Z

CONNEALY THUNDER
NORTHERN VIEW THUNDER 72X
NORTHERN VIEW LUCY 86U

S: RIVERSIDE ACTIVE DUTY 762E

D: RIVERSIDE DIVERSITY 8E

KBJ ABOVE STANDARD 78X

RIVERCREST DIVERSITY 12N

DREAM MAKER BLACKBIRD 753Z

RIVERSIDE DIVERSITY 8T

DREAM MAKERS BLACKBIRD 737X

RIVERCREST BLACKCAP CSP 31P

ADJUSTED

EPD'S

BW	WW	YW	BW	WW	YW	MILK	TM	CE	MCE
84	568	-	+3.2	+41	+70	+21	+41	+1.0	+6.0

A moderate framed easy fleshing Active Duty daughter. Her Dam is a very feminine Thunder daughter with a picture-perfect udder. We are very excited with our first calf crop from Active Duty.

Riverside Erica 74G

TCS 74G FEBRUARY 2 2019 #2105779



R B ACTIVE DUTY 0010X
MINBURN ACTIVE DUTY 48B
MINBURN LASSIE 134Z

CONNEALY THUNDER
NORTHERN VIEW THUNDER 72X
NORTHERN VIEW LUCY 86U

S: RIVERSIDE ACTIVE DUTY 762E

D: RIVERSIDE ERICA 71E

KBJ ABOVE STANDARD 78XX

LORENZ DATELINE 16P

DREAM MAKER BLACKBIRD 753Z

RIVERSIDE ERICA 17U

DREAM MAKERS BLACKBIRD 737X

ERICA OF RANNOCH 630L

ADJUSTED

EPD'S

BW	WW	YW	BW	WW	YW	MILK	TM	CE	MCE
82	540	-	+4.4	+47	+84	+21	+45	+1.5	+8.5

Lots of Maternal strength in the pedigree of TCS 74G, her dam has a full brother in the sale.



RIVERSIDE
ACTIVE DUTY 762E
SIRE OF LOT 32

Thank You - Your Support is Greatly Appreciated!

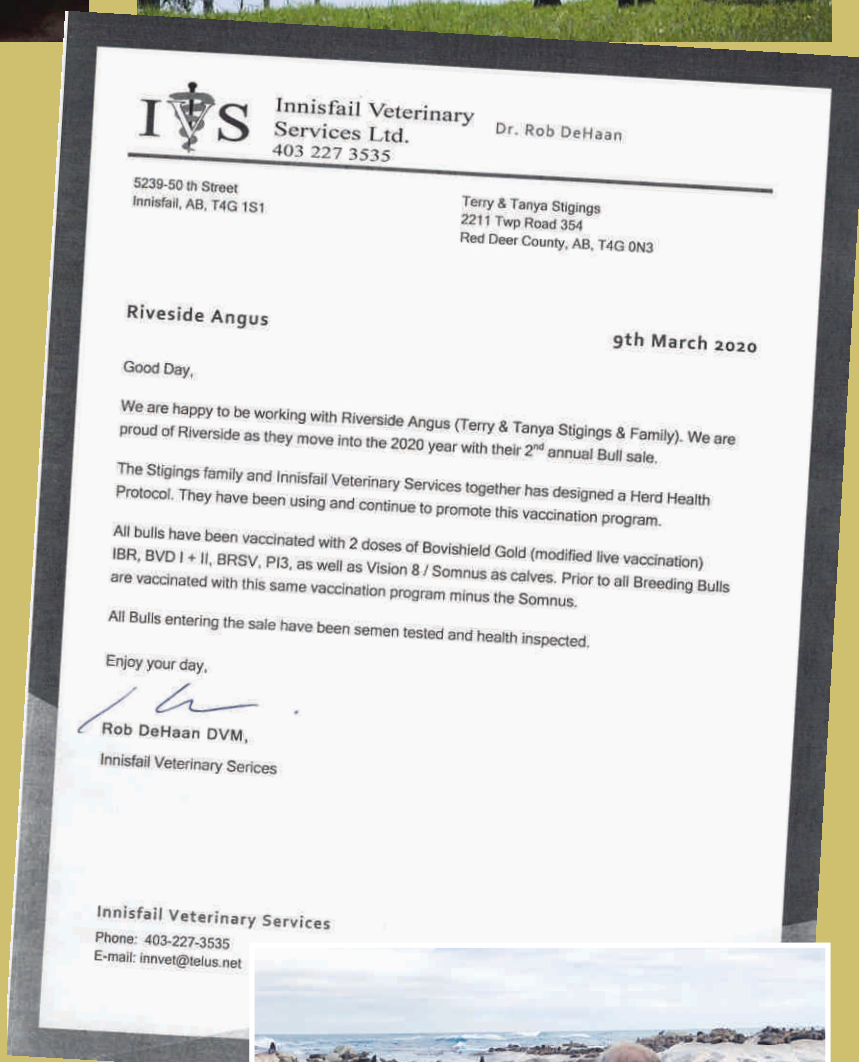


Riverside Angus and Dersta Farm is excited to have Dark Woods Brewery as well as Stone Heart Distillery supporting our sale. Both businesses will be serving before and after the sale for your enjoyment. These local companies work very hard in our community supporting several different organizations at their events.

Thank you for being a part of our Sale.

Riverside Angus & Dersta Farm.

Thank you Blue Rock Mineral for sponsoring coffee prior to the sale.





DERSTA FARM LTD.

36308 RR 13, Red Deer County, AB T4G 0M9

derstafarm@gmail.com

Derek: 403-877-0479 ■ Stacey: 403-506-1473

Welcome

Welcome to the 2nd Annual Riverside Angus and DERSTA Farm Bull Sale. We would like to extend a heartfelt thank you to our previous customers. Your confidence in our program is greatly appreciated. If you're like us we were happy to see 2019 in the rear-view mirror. The struggles of Mother nature this past spring, summer and fall made calving, haying, Harvest a struggle across all the prairie provinces. Outside there is an outstanding group of Black Angus Bulls and some super sweet Purebred Black Heifers on offer from the Stigings Family. We have 14 Registered Red Angus Bulls with majority of them safe to use on Heifers. You can buy with confidence (Unlike mother nature) any one of the animals on offer.

Majority of the bulls on offer are lighter BW specifically kept as Heifer bulls with adequate growth.

We have once again kept a tight 60-day calving on our cowherd, as we feel this helps tremendously to keep the fertility and stayability high in the herd. The mineral is carefully balanced and custom made to match our feed each year, all year round by Blue Rock Mineral. Cows are on a full herd health program (Alberta Veterinary Center, Dr. Rick Katchuik and Innisfail Vet Services Dr. Rob DeHaan) where every year they receive the pre-breeding vaccines of Bovishield Gold, 8way and De-wormer one month prior to breeding. They ALL, not just the heifers, receive the ScourGuard vaccine 4 weeks prior to calving. The Calves receive the Bovishield vaccine and 8way prior to going to pasture and again when they are weaned.

The bulls were weaned on Sept. 10, 2019. They are started slow and fed free choice grass hay along with a prepared balanced grain ration at 1.5% of body weight from Healthy Herds in Bentley. The bulls are pail fed twice per day. They are all quiet easy to handle bulls. All the bulls will be vaccinated with Bovishield Gold vaccine and the foot rot vaccine. We will ensure they receive their booster before sale day.

If there is anything that goes wrong or you are not satisfied with your purchase please let us know. All Bulls selling have passed a semen test and are fully guaranteed under the Canadian Angus Association Breeder's Guarantee.

Feel free to stop by to have a look at the bulls and their Dams/Sires or give us a phone call before the sale.

SEE YOU SALE DAY!

Derek, Stacey, Erika (11), Lexie (8) & Logan (4) Mathon

Red DSM Honky Tonk

DSM 302A JANUARY 2 2013 #1722312

RED LAZY MC STOUT 30S
RED LAZY MC COWBOY CUT 26U
RED LAZY MC STAR 185M
S: RED LAZY MC HONKY TONK 11X
CROWFOOT 4130P
RED YY PATTY 70IT
RED BWA PATTY 10R
RED TOWAW INDEED 104H
RED EKW GOLDEN DEED 10U
RED EKW GOLDIE 60IS
D: RED EKW OLIVIA 23X
RED MESSMER RED OPTION 990Z
RED EKW OLIVIA 706T
RED SIX LINE OLIVIA 213P

ADJUSTED				EPD'S						
BW	WW	YW		BW	WW	YW	MILK	TM	CE	MCE
90	706	1316		+3.8	+47	+81	+19	+43	-9.0	+3.0

Here is one of those bulls that never misses a beat. He is large square feet and with muscling and that desirable extra length of rib. 302A's dam Red EKW Olivia 23X is one of our cornerstone females that we are building our herd around. She continually gives us a 'keeper' calf where we are proud to offer the bulls and the heifers we hate to let go and every so often in select sales we will let the odd one go as we are confident they will work in any program. This past spring all 32 cows he was with at the age of 5 calved in the first 5 weeks. His Heifers have calved extremely well with nice neat udders and lots of milk. Both his daughters and sons have that added frame and length and weight which compliments each other in a way as not to compromise calving ease.





Red Mar Mac Delegate 72D

KOF 72D FEBRUARY 05 2016 #1907966

RED BECKTON NEBULA H R233
RED BECKTON NEBULA W312 L3
RED BECKTON LAKME J460 LT
S: RED FLYING K NEPTUNE 28Z
RED FLYING K BARNEY 69K
RED FLYING K BERRY 9X
RED FLYING K MELODY 138U

GUMBO GULCH CREED 94S
DMM CREED 75W
RED DMM ESSENCE 156P
D: RED MAR MAC FRAN 47A
RED MLK CRK CLUB 722
RED MCRAE'S FRAN 17S
RED MCRAE'S FRADO 53J

ADJUSTED			EPD'S						
BW	WW	YW	BW	WW	YW	MILK	TM	CE	MCE
78	715	1320	-4.4	+26	+44	+30	+43	+10.0	+8.0

We purchased Delegate from Mar Mac Farms in Manitoba. We really liked the look of him in his photo and how he moved, almost cat like, in his video. We needed another heifer bull but that would also work well on cows. All those boxes were checked and more. Once we got him home from Manitoba he was put DIRECTLY in with his girls and just quietly did his job. His calves have come out all and I mean all in the weight range of 75-82 with not much variation. They are vigorous calves that never stop. Both bulls in the offering are smaller framed bulls full of meat and potatoes.

Red 9 Mile Franchise 6305

IMP 6305D MARCH 2 2016 #2017139

BASIN FRANCHISE P142
SPUR FRANCHISE 7070
H&H L&C LADY BEHAVE 5040
S: SPUR FRANCHISE OF GARTON
SYDGEN C C & 7
H&H IRENE LASS 0135
H&H IRENE LASS 7116

RED BECKTON CODY V E023
RED TR COLT 45 UT806
RED BECKTON COCA L388
D: RED C-BAR ABIGRACE Y11
RED LJC MISSION STATEMENT P27
RED C-BAR & BROWN ABIGRACE T714
RED BROWN MS ABIGRACE L7730

ADJUSTED			EPD'S						
BW	WW	YW	BW	WW	YW	MILK	TM	CE	MCE
-	-	-	-3.0	+40	+72	+21	+41	+5.0	+1.0

We chose the Franchise semen out of the Red Roundup sale to widen our genetic reach. Franchise is known for his unique outcross pedigree of Black/Red Carrier genes, and also for his outstanding feed efficiency and carcass genetics. Currently in the top 2% for marbling and 1% for REA. The calves that have been born in both 2019 and now 2020 are born small and start growing. And boy do they grow. Watch for exciting offspring from our new herdsire (sired by Red 9 Mile Franchise 6305) in the 2022 bull sale.



Red U2 Rolls Royce 379E

DUA 379E JANUARY 27 2017 #1983866

RED BIEBER ROOSEVELT W384
RED BIEBER ROLLIN DEEP Y118
RED BIEBER TILLY 399W
S: RED TR ROLLS ROYCE 44B
RED GEIS KNIGHT HAWK 14'02
RED TR DOLL TARA 340S
RED TR DOLL TARA 22J

RED FLYING K AMBUSH 51T
RED U-2 AMBUSH 423Y
RED U-2 ANEXA 5F
D: RED U-2 COUNTESS 590C
RED KBJ WILD CARD 896S
RED U2 COUNTESS 331W
RED FLYING K COUNTESS 2N

ADJUSTED			EPD'S						
BW	WW	YW	BW	WW	YW	MILK	TM	CE	MCE
76	-	-	-0.1	+38	+70	+19	+38	+5.0	+5.0

Purchased out of the U2 2018 bull sale. His Length of spine, Calving Ease, and incredible wean to yearling weight made him good candidate to cross on our performance backed cows. He was the right frame with added dimension from all angles.



HERDSIRE PROSPECTS



Red DSM Franchise 901G

DSM 901G JANUARY 1 2019 #2087089



SPUR FRANCHISE 7070
SPUR FRANCHISE OF GARTON
H&H IRENE LASS 0135
S: **RED 9 MILE FRANCHISE 6305**
RED TR COLT 45 UT806
RED C-BAR ABIGRACE YII
RED C-BAR & BROWN ABIGRACE714

RED TONGUE RIVER JUBILATION
RED FLYING K JULIAN 116Z
RED FLYING K DANA 10X
D: **RED RED-ROCK LAKIMA 504E**
RED RED-ROCK RENEGADE 034P
RED RED-ROCK LAKIMA 503Y
RED RED-ROCK LAKIMA 501L

BW	WW	BW	WW	YW	MILK	TM	CE	MCE
74	680	-1.8	+43	+82	+19	+41	+7.0	+7.0

Use on second calvers and cows with his added shoulder which he has inherited from his Dam. The Widest top calf on offer with the muscle definition that is second to none. He's going to calve nicely on cows and give you some to die for replacement heifers. Purchased the limited edition of Franchise Semen out of Red Roundup and he calves have not disappointed. They are born a tad on the small size but boy do they grow ALL year.



Red DSM Rolls Royce 902G

DSM 902G JANUARY 1 2019 #2087039



RED BIEBER ROLLIN DEEP YIIB
RED TR ROLLS ROYCE 44B
RED TR DOLL TARA 340S
S: **RED U2 ROLLS ROYCE 379E**
RED U-2 AMBUSH 423Y
RED U-2 COUNTLESS 590C
RED U2 COUNTLESS 331W

RED SDO LINE MR H0904 367P
RED BROWNALTA MR. HIPS IW
RED KBJ LADY ROSETTE 924K
D: **RED BROWNALTA LORILEE 9Y**
RED SPRING CREEK HIGH POWER 7J
RED BROWNALTA HI LINE 30M
RED BROWNALTA BANDIT 32J

BW	WW	BW	WW	YW	MILK	TM	CE	MCE
69	610	+0.7	+31	+58	+18	+34	+1.5	+4.5

2nd calf cows with the confidence of added pounds. Maternal Brother sold to Jim Freeman of Sylvan lake in 2016. He's got the length. He's got the Width. He's got the Look. And He's got the Guts that adds pounds & money to your steers in the fall.



Red DSM Honky Tonk 909G

DSM 909G JANUARY 1 2019 #2086919



RED LAZY MC COWBOY CUT 26U
RED LAZY MC HONKY TONK IIX
RED YY PATTY 70IT
S: **RED DSM HONKY TONK**
RED EKW GOLDEN DEED 10U
RED EKW OLIVIA 23X
RED EKW OLIVIA 70GT

RED FINE LINE MULBERRY 26P
RED BRYLOR JKC GHOST RIDER108Y
RED BRYLOR CHEROK 22L
D: **RED WRAZ MARIA 18C**
RED DIMLER INDEED 105R
RED WRAZ MISS MARIA 70U
RED D.J. MISS MARIA 4S

BW	WW	BW	WW	YW	MILK	TM	CE	MCE
89	711	+2.5	+49	+78	+20	+45	-5.0	+6.0

Another Cow bull that is going to push the scale down with the added pounds on his calves in the fall. The last son ever offered off our Senior Herd sire of 6 years DSM 302A. He has given a great set of replacement heifers and a consistent group of bulls to sell each and every year. We sold him to Saskatchewan where he has proven his soundness and consistency.



Red DSM Assassin 915G

DSM 915G JANUARY 3 2019 #2087071



RED LSF SAGA 1040Y
RED PIE SPECIALIST 430
RED PIE PLAYMATE 232
S: RED COCKBURN ASSASSIN 624D
RED LAZY MC HUSTLE 18T
RED COCKBURN CORA 254Z
RED WILBAR CORA 443P

RED UBAR HIGH CAPACITY 224
RED BADLANDS CAPACITY 37W
RED BADLANDS RED CEDAR 311
D: RED DSM LADY LUCK 402B
RED YY DSGN KING 522R
RED YY LADY LUCK 784T
RED YY LADY LUCK 584R

BW	WW	BW	WW	YW	MILK	TM	CE	MCE
94	645	+0.6	+41	+72	+27	+48	+1.0	0.0

Frame size for the Cow end but the calving ease to make it that much better. This is one to keep all the replacements heifers and steers you will stand tall to take to town. Dam is the grand dam to our herd sire Razor which you will hear A LOT about at the 2021 bull sale. Ample Milk, Amazing foot quality, the 'look' that will make you grin is what comes to mind on dam of 915G.



Red DSM Delegate 918G

DSM 918G JANUARY 7 2019 #2087046



RED BECKTON NEBULA W312 L3
RED FLYING K NEPTUNE 28Z
RED FLYING K BERRY 9X
S: RED MAR MAC DELEGATE 72D
DMM CREED 75W
RED MAR MAC FRAN 47A
RED MCRAE'S FRAN 17S

RED BRYLOR TOAST 30T
RED BRYLOR TOAST 53X
RED BRYLOR VIDALIA 251U
D: RED RED-ROCK ROXIE 601E
RED ROD CHEROKEE 14S
RED RED-ROCK ROXIE 600Y
RED RED-ROCK ROXIE 607T

BW	WW	BW	WW	YW	MILK	TM	CE	MCE
82	639	-1.6	+23	+39	+29	+41	+5.0	+4.0

Calving ease deluxe right here. These Delegate Sons have not disappointed on the consistency of calf weight and gain. His Dam 601E is a milking machine. Square udder and large dark feet. A name we hold in high esteem, Nick VanGalen, mentioned to us to NOT pass this heifer up when the opportunity knocked. And we have never regretted this decision ever.



Red DSM Delegate 923G

DSM 923G JANUARY 11 2019 #2086921



RED BECKTON NEBULA W312 L3
RED FLYING K NEPTUNE 28Z
RED FLYING K BERRY 9X
S: RED MAR MAC DELEGATE 72D
DMM CREED 75W
RED MAR MAC FRAN 47A
RED MCRAE'S FRAN 17S

RED LAZY MC SMASH 41N
RED SY SMASH 15X
WYNNBROOK'S BARBARA 119K
D: RED DSM ELITE 412B
RED TOWAW MONARCH 270G
RED HAZEL BLUFF ELITE 34M
RED HAZEL BLUFF ELITE 34J

BW	WW	BW	WW	YW	MILK	TM	CE	MCE
81	617	-1.4	+26	+44	+25	+38	+6.0	+7.0

2nd calf cows with added frame. Dark Red Colour, Length of Spine. The Cross on 412B cow and the Delegate bull is one we will repeat. Black square feet and the udder on the Dam is amazing.



Red DSM Rolls Royce 929G

DSM 929G JANUARY 15 2019 #2087053



RED BIEBER ROLLIN DEEP Y118
RED TR ROLLS ROYCE 44B
RED TR DOLL TARA 340S
S: RED U2 ROLLS ROYCE 379E
RED U-2 AMBUSH 423Y
RED U-2 COUNTESS 590C
RED U2 COUNTESS 331W

RED WEBR TOMAHAWK 1204
RED SIX MILE TOMAHAWK 352B
RED SIX MILE LAKOTO 35W
D: RED RED-ROCK URRISAL 491E
RED GEIS MISSION 139'11
RED RED-ROCK URRISAL 492B
RED RED-ROCK URRISAL 294W

BW	WW	BW	WW	YW	MILK	TM	CE	MCE
81	654	+0.3	+37	+66	+23	+42	+2.0	+2.0

Heifer bull. Narrow head followed by the neck extension and tight shoulders. Paternal brother to DSM 902G. And who definitely has taken after his Dam on frame over his Sire.



Red DSM Delegate 942G

DSM 942G JANUARY 27 2019 #2086922



RED BECKTON NEBULA W312 L3
RED FLYING K NEPTUNE 28Z
RED FLYING K BERRY 9X
S: RED MAR MAC DELEGATE 72D
DMM CREED 75W
RED MAR MAC FRAN 47A
RED MCRAE'S FRAN 17S

RED WILDMAN DAMAGE 930W
RED LONE STONE BUSTED 150A
RED LONE STONE LISA 70U
D: RED LONE STONE CHOICE 37D
RED TER-RON TOUCHDOWN 8S
RED LONE STONE CHOICE 64Y
RED LONE STONE 104H SIS 54S

BW	WW	BW	WW	YW	MILK	TM	CE	MCE
81	664	-1.6	+31	+49	+24	+40	+7.0	+7.0

Calving ease bull with the dark red hair coat. Purchased his dam from Lonestone Farms female sale, has a nice tidy square udder and small teats. Considering how long it took this guy to eat the ration (Early Dec) he has come along very nice.



Red DSM Delegate 943G

DSM 943G FEBRUARY 1 2019 #2087083



RED BECKTON NEBULA W312 L3
RED FLYING K NEPTUNE 28Z
RED FLYING K BERRY 9X
S: RED MAR MAC DELEGATE 72D
DMM CREED 75W
RED MAR MAC FRAN 47A
RED MCRAE'S FRAN 17S

RED BRYLOR TOAST 53X
RED RED-ROCK SUPREME 271B
RED RED-ROCK MISS STOCKY 271Y
D: RED RED-ROCK TRIXIE 720E
RED MPV PATRIOT 14W
RED RED-ROCK TRIXIE 20Y
RED MPV TRIXIE 107N

BW	WW	BW	WW	YW	MILK	TM	CE	MCE
78	595	-1.6	+23	+42	+24	+36	+7.0	+7.0

Heifer Bull Deluxe. If your wanting a pound adding bull 943G probably isn't your best bet. BUT...IF you are wanting an easy calving bull for your heifers then 943 G is definitely the bull you are looking for. These Red Rock heifers we purchased have not disappointed in foot structure or Udder structure.



Red DSM Riddler 944G

DSM 944G FEBRUARY 1 2019 #2087068



RED NCJ MYSTIFIED 16X
RED K F MYSTERY MAN 44A
RED K F MS FIREFLY 86W
MAR MAC BLACKBERRY 155X
RED MAR MAC SPARTAN 81A
MCRAE'S SIERA LEE 55W

S: RED BRIDGEWAY RIDDLER 9D
RED FRASER COYOTE 918W
RED BRIDGEWAY SALLY 60B
RED DKF MISS SALLY R 37S

D: RED MAR MAC REBA 23E
RED FLYING K PRINCE 171M
RED MCRAE'S REBA 66P
RED MCRAE'S REBA 25J

BW	WW	BW	WW	YW	MILK	TM	CE	MCE
74	706	-1.6	+32	+45	+24	+40	+10.0	+9.0

Another Calving ease deluxe bull. Well Balanced from front to back and everywhere in between. Straight legs with Dark square feet. Purchased his Dam from Mar Mac Farms for her udder and maternal qualities.



Red DSM Edition 946G

DSM 946G FEBRUARY 9 2019 #2134247



RED BADLANDS CAPACITY 37W
RED CHOPPER K CAPACITY 308B
CHOPPER K TEWSOXRD 120X
RED BIEBER MAKE MIMI 7249
RED FEDDES BIG SKY R9
RED FEDDES LAKINA 310

S: RED MAR MAC EDITION 29E
DMM CREED 75W
RED MAR MAC PRINCESS 14A
RED BUCK VALLEY PRINCESS 11S

D: RED DSM SHADY LADY 503C
RED LAZY MC HONKY TONK 11X
RED DSM SHADY LADY 301A
BAR-X SHADY LADY 326R

BW	WW	BW	WW	YW	MILK	TM	CE	MCE
96	676	+3.2	+45	+66	+23	+46	0.0	+0.5

Don't let his size fool you. He can pack a punch on his calves. His smaller frame size comes from his Dam whose family name is cherished here at DERSTA Farm. Every year, every cow that carries the Shady Lady name either makes the bull pen or is retained as a replacement heifer. We only have 2 calf crops from his Sire Red Mar Mac Edition 29E as he broke his leg the day we pulled him from his breeding group late last spring. The calves are deep, soggy, lengthy and clean shouldered as you can get. You can always tell an Edition calf. Maternal Brother sold to Shand Farms of Cremona, AB in 2018.

Red DSM Edition 947G

DSM 947G FEBRUARY 2019 #2087056



RED BADLANDS CAPACITY 37W
RED CHOPPER K CAPACITY 308B
CHOPPER K TEWSOXRD 120X
RED SSS BOOM TOWN 260D
RED EKW BEAR TOOTH 22Z
RED EKW DOUBLE FIRE 708T

S: RED MAR MAC EDITION 29E
DMM CREED 75W
RED MAR MAC PRINCESS 14A
RED BUCK VALLEY PRINCESS 11S

D: RED EKW LANA 11C
RED TOWAW INDEED 104H
RED EKW LANA 21Y
RED HOWE LANA 161P

BW	WW	BW	WW	YW	MILK	TM	CE	MCE
119	745	+9.4	+57	+92	+27	+56	-16.0	-2.0

Don't let his weight scare you. He's got the length of body which is where those pounds come from and the shoulders of his sire. NO word of a lie. We pulled 1. Only 1 calf from this sire group and it was backwards full breech. With the average weight of the calves standing on the sire group at 113 pounds each of the steers weighed in the fall 890-950 lbs. Now that is a pound maker. It would be hard to find a more consistent group of calves than the Red Mar Mac Edition Calves. The added LENGTH, Added DEPTH of rib makes for an easy decision. These are the cowboy bulls.





Red DSM Cutting Edge 951G

DSM 951G MARCH 2 2019 #2087069



RED JENSEN CACTUS SKY 25S
RED JENSEN CACTUS 2Z
RED JENSEN IRASTONE 552IR
S: RED T-K CUTTING EDGE 127D
RED U-2 DYNAMO 702IT
RED D-BAR SOXRO 6IW
RED D-BAR SOXRO 28S

RED BRYLOR 40X BAILEY 50K
RED BRYLOR PARALYZER 98P
RED S- JULIE 10J
D: RED DSM MISS SEAMAN 606D
RED RINGSTEAD MATRIX 72N
RED RINGSTEAD MISS SEAMAN 673X
RED RINGSTEAD MISS SEAMAN 610P

BW	WW	BW	WW	YW	MILK	TM	CE	MCE
81	701	-0.2	+34	+62	+28	+45	+5.0	+6.0

Heifer Bull with added Presence and the Look that gets him noticed in the bull pen. Youngest Calf on offer yet stands with the oldest on weight, and noticeability. We originally sold his dam in Red Roundup to T-Bar K Ranch in Saskatchewan and later purchased her back when they dispersed in 2018. And She now has the Sweetest heifer calf this year in which you might see down the show road in the future.

Thank you to Last Year's Buyers

Randy Stigings (Volume Buyer)
Ryan Dodd (Repeat Buyer)
Aron Lutz (Repeat Buyer)
Troy Conaway (Repeat Buyer)
Pete Bosomworth (Repeat Buyer)
Danny & Kathy Newton (Repeat Buyer)

Darren Roemelle
Grant Daines
Lorraine McNutt
Debora Martens
David Anderson
Fred Taylor
Blain Farm LTD
Ian Scott

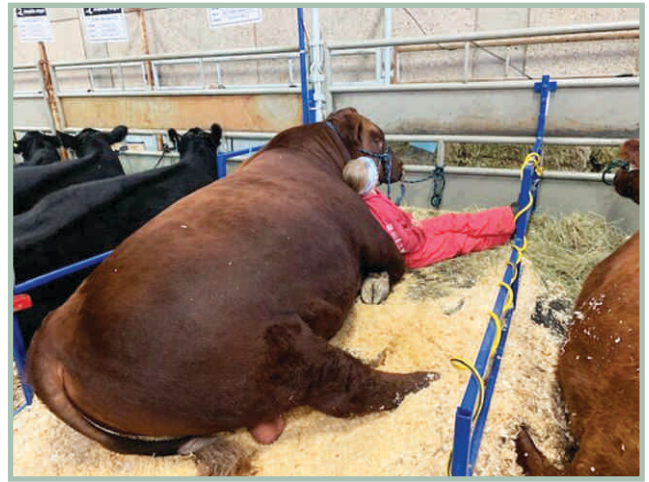
Lura Yarschneko
Rob Nanniga
Rupert Lansink Farm
Trail Creek Farm
Lorraine Mounkes
4Wal Ranching
Coulee Crest Farms- Randy Radau
Robin Severtson

Stankievec Ranches
Carson Walburger
Paget Cattle Company Ltd.
R.J.A. Ranch Ltd.
J Lazy A Ranch - Jarin & Amber Carter
Barry & Mary Thomson



TERMS & CONDITIONS

- Bulls will be displayed at the Innisfail Auction 1 day before the sale and have Lot numbers according to the catalogue
- The terms of the sale are cash or cheque payable par at the sale location.
- Registration Papers – All animals will sell as registered and the papers will be transferred to the new owner after payment has been made.
- All bulls will sell under the CAA standard Terms & Conditions.
- All announcements from the sale block will take precedence over the printed material in the catalog.
- Insurance: the consignors would like you to insure the bulls, an insurance agent will be available sale day.
- Delivery: the consignors will work with the new owners to deliver the bulls free of charge if assistance is needed. If taken sale day you will receive \$100 off your purchase price.
- Any bulls remaining at either farm after May 1st will be charged \$2.50 a day.
- Sale day weights and scrotal measurements will be available sale day and all bulls sold will have passed a semen test and fully guaranteed.
- All persons who attend the sale do so at their own risk and the owners, sale management and sales staff assume no liability, legal or otherwise, for property loss or any accidents that may occur.





OBI LIVESTOCK LTD.

28 GLENDALE BLVD
Red Deer, AB T4P 2P3



2ND ANNUAL
RiVERSIDE
ANGUS
ANGUS BULL & FEMALE SALE
TERRY & TANYA STIGINGS & FAMILY



WITH GUEST CONSIGNOR:
DERSTA FARM LTD.
DEREK & STACEY MATHON & FAMILY



*See You
Next Year!*