

TARGETING THE NEEDS OF OUR CUSTOMERS !

ON TARGET

20TH ANNUAL
BULL & FEMALE SALE

TUESDAY MARCH 17, 2020 • 1:00 PM

BARRHEAD AG BARN, BARRHEAD, AB

SELLING 72 ANGUS
& SIMMENTAL
YEARLING BULLS
& 10 ANGUS &
SIMMENTAL OPEN HEIFERS
THIS YEAR

- CINDER ANGUS
- DWAJO ANGUS
- SIBL SIMMENTALS





DWAJO COMMERCIAL 83F

DJE 83F FEBRUARY 8 2020 COMMERCIAL

KESSLERS FRONTMAN R001
MUSGRAVE FOUNDATION
MCATL BLACKCAP JUARA 29-434

S: BORDER BUTTE FOUNDATION 15C
21AR ROUNDUP 7005
CUDLOBE COUNTESS 25X
CUDLOBE COUNTESS 5'07

D: COMMERCIAL ANGUS/SIMMENTAL COW

20 years ago we started the On Target Bull & Female sale and the first donation heifer was started in memory of our fathers Cliff & Jack. We have continued with this process donating heifers from the multiple consignors and have raised over \$60,000 donated to Ag Society and \$20,000 to other areas that have helped out in Barrhead Area. The heifer this year is out of Foundation X Simm x Angus cow she would make a great replacement female for the lucky winner. We would like to thank you all that have supported our causes over the last 20 years.

1. The final bid in each round will denote the amount of that bidder's donation, eg.
Round 1 - Final Bid is \$300.00 to Randy Mitchell. Randy's donation is \$300.00.
Round 2 - Final bid is \$250.00 to Tom Jones. Tom's donation is \$250.00.
Round 3 - The female is re-auctioned on a downward scale until no further bids are received at the low of \$10.00
2. Each \$10 purchase (donated) represents one chance in the final draw. eg. Randy Mitchell has 30 chances. Tom Jones has 25 chances and so on down the scale to the final \$10.00 donation worth one chance each.
3. One ticket for every \$10.00 donated, bearing the contributor's name will be put into the draw barrel.
4. At the end of the sale, one ticket will be drawn, with the person winning the heifer.

OBI Welcome 2020

*It is once again with great pleasure to be working with the
On Target Group to bring you there 2020 Bull & Female Sale*

20 Years!

What a huge accomplishment for the members of the On Target Sale Group. I would like to congratulate each and every family member as these milestones are very hard to achieve in the purebred business. Rob Holowaychuk created this event with Dwajo Angus, Hidden Springs Ranch (Cinder Angus) and Jones Land & Cattle in 2000. SIBL Simmentals & CRM Simmentals joined the group to add some Simmental Influence for the area and with this the On Target Group became a sale with top end Angus and Simmental genetics being offered off the top of their programs each and every year. CRM Simmetanls and Jones Land & Cattle left the sale and the 3 operations now, Dwajo Angus, Cinder Angus and SIBL Simmentals continue on the tradition of servicing the area with top quality bulls and females for you their customer. One thing that never has changed is the service the group have made to their customers; listening to what their needs are and making sure they are satisfied with the product.

20 years of sales staff over the years, Steve Dorran and Mark Holowaychuk (20), Rob Holowaychuk (17), Mark Stock (14), Dennis Ericson (13), Shane Castle (7), Bob Toner (6), Craig Flewelling (5), Roger Peters (4), Andrew Reedleder (3), Ben Wright (2) and Nate Marin (1). I would like to personally thank Steve Dorran for his commitment to the sale for all of them. In the past 20 years we honor those family members this year that have left this earth too early to see the 20th Annual Sale.

A Little about the 2020 sale, SIBL Simmentals, Cinder Angus and Dwajo Angus cull the bull pen very hard and brought to town the top of their bull pen for you to evaluate. Sound, good footed, docile, well-structured bulls with longevity built in mind. The females will be very functional animals for their new owners as well.

I am very familiar with all the herds involved in the On Target Sale so if you need any assistance before or on sale day, please do not hesitate to call me, anyone of the consignors or sales staff. We will be glad to help you. Come by the barns the night before if you can for some fellowship and storytelling about the past 20 years and the future 20 years.

SEE YOU IN BARRHEAD, MARCH 17TH

Mark Holowaychuk, OBI (403) 896-4990

Roger Peters, OBI (403) 828-9815



BUYERS DRAWS & EQUIPMENT USE

SPONSORED BY: DEERLINE SALES, BARRHEAD TD CANADA TRUST,
MASTERFEEDS, PRODUCT FROM ZOETIS AND BARRHEAD
TRANSIT MIX FROM BARN PREPARATION & CLEAN UP

BUYERS DRAW 2020

THIS YEAR'S BUYER'S DRAW IS FOR THE MAYFIELD INN
& DINNER THEATRE WITH HOTEL ACCOMMODATIONS.
COURTESY OF THE ON TARGET GROUP.

On Target Bull Guarantee

We guarantee to provide you with a sound, fertile bull capable of servicing cows. In the event that your bull is a non satisfactory breeder, the seller will not, under any circumstances, be responsible for more than the original selling price of any bull or female sold in the sale. The consignor will not provide replacement or credit for physical injury or mismanagement. Therefore we stress the importance of insurance on your bull. An insurance agent will be available sale day.

Note: Bulls can be wintered until April 15, 2020 at no charge but all bulls kept must be insured.



TARGET

20TH ANNUAL BULL & FEMALE SALE

OFFERING 82 LOTS:

33 Red Angus Bulls
22 Black Angus Bulls
17 Simmental Bulls
6 Angus Open Heifers
4 Simmental Open Heifers

On Target
Sale Group

CINDER ANGUS

Brad Yoder & Nicolle Hoskins & Family
2407 TWP Rd 583A, Barrhead County, AB T7N 0L1
Home: 780-674-5773 • Cell: 780-674-1196

DWAJO ANGUS

Dwayne, Joanne & Jesse Emery
Box 31 Camp Creek, AB T0G 0L0
Home: 780-674-4410 • Cell: 780-305-4209

SIBL SIMMENTALS

Barclay & Michelle Smith & Family
RR#1, Site 3, Box 6, Cherhill, AB T0E 0J0
Cell: 780-305-6716

TUESDAY MARCH 17, 2020 • 1:00 PM
BARRHEAD AG BARN, BARRHEAD, AB
LUNCH AT NOON

SALES STAFF:

Steve Dorrn, Auctioneer 403-540-9498
Craig Flewelling, Ringman 403-556-0515
Nate Marin, Ringman 306-869-7130
Mark Holowaychuk, OBI 403-896-4990
Roger Peters, OBI 403-828-9815
Kylie Simpson, OBI 780-385-8446
Jesse Emery, OBI 780-284-3490

DLMS

Mark Shologan 780-699-5082

INSURANCE

Monica Czech, CFI 780-318-3636

HOTEL ACCOMODATIONS

Barrhead Neighborhood Inn 780-674-3300

VIEW BULL VIDEOS ONLINE AT: WWW.CATTLEVIDS.CA
VIEW CATALOGUE ONLINE AT: WWW.CATTLEMANAGEMENT.CA

Can't make it to the sale? **Watch & Bid Online.**

With DLMS you can Watch, Listen & Bid on your computer
just like you were there with online bidding over the internet

Instructions for Viewing And Bidding At the Sale

Visit www.dlms.ca, Fill out the registration form located under registration
and sign-up for your free user account to select a username and password.

BIDDERS - To be approved as a bidder, Log in and click BUYER APPROVAL tab,
select the sale you are interested in bidding at and click sign up.

For more information or for help getting approved Call:

Whitney Bosovich 780.991-3025 or Mark Shologan - 780-699-5082

Direct Livestock Marketing Systems
We're Making the Connection

DLMS
www.dlms.ca

To find an agent or sale near you today
visit www.dlms.ca

Purebred Sales • Daily Presort Sales
Direct Off-farm Sales every Thursdays at 10:00 am

**TAKE YOUR
BULL HOME**
SALE DAY & RECEIVE
\$100 OFF
THE PURCHASE PRICE

*Sale Day
Phones:*

MARK HOLOWAYCHUK, OBI 403-896-4990 • ROGER PETERS, OBI 403-828-9815
DWAYNE EMERY 780-305-4209 • BRAD YODER 780-674-1196 • BARCLAY SMITH 780-305-6716

CINDER ANGUS

BRAD, NICOLLE, BRYNNE & TAVIANNE YODER
COUNTY OF BARRHEAD, AB
HOME (780) 674-5773
BRAD'S CELL (780) 674-1196



RED CINDER ADDICTED 255G

CIND 255G JANUARY 06 2019 #2128045

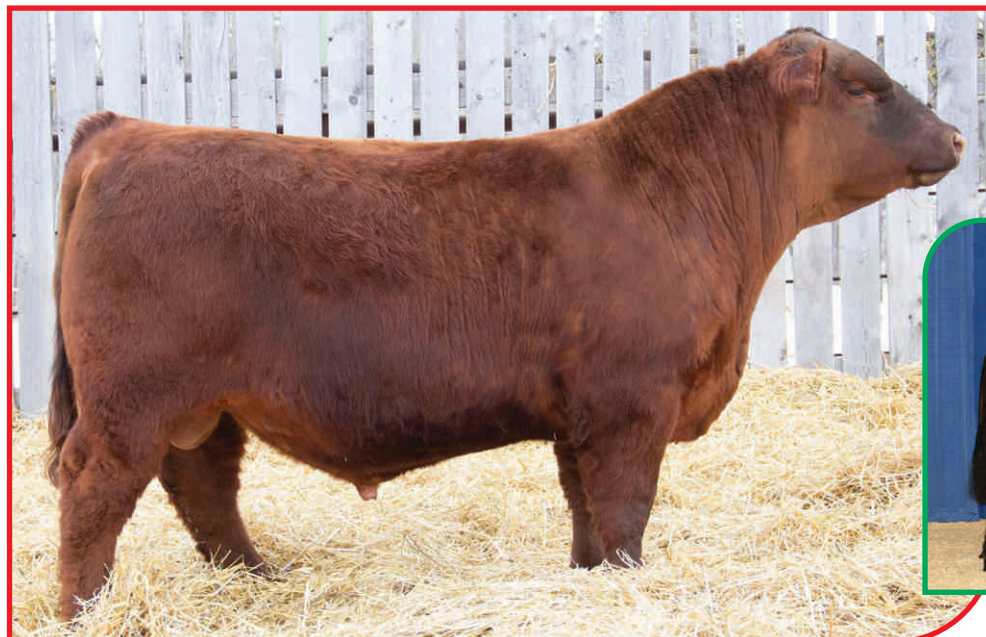


TER-RON PARK PLACE 18Y
RED TER-RON BAZINGA 13B
RED TER-RON AMBER 46W
S: RED GOAD HIGH ROLLER 142'17
RED DWAJO WILDCARD 119S
RED CINDER MISS TOKUN 9X
RED HIDDEN DAISY 9N

RED CINDER MARTIN' UP 132P
RED CINDER IN FOCUS 112W
RED HIDDEN SHOWGIRL 112G
D: RED CINDER FREYJA 155Y
RED DRYFORK K-C PRECISELY JACK
RED CINDER FREYJA 55U
RED ROYAL FREYJA 55M

BW	WW	YW	MILK
88	774	1325	-
3.2	35	61	18

BPD ACTUAL



RED CINDER ADDICTED 255G - LOT 1

Welcome to our 20th Annual On Target Sale, we can't believe it has been that long already! Many events have happened in that time frame – we've won some and lost some, but as always, we strive to produce bulls that work in any environment. As always, we are looking to keep progressive with our offerings and find some different bloodlines for our customers to access, and also offer some of our proven, reliable matings that eliminate all the guesswork. We feel this is one of our most consistent groups of herd sire prospects to date.

This year has been extremely rewarding for us at Cinder; the girls continue to thrive at the junior shows, and we have exhibited some females that have put a stamp on our program. Brylor Ranch and the girls showed Red Cinder Freyja 29E, aka "Kiki", and her baby were crowned Grand Champion Red Angus Female at Farmfair 2019 and then named Top 10 Finalist two weeks later at Agribition's prestigious Royal Bank Supreme. There will be three bulls in the sale related to this cow, so step up and seize the opportunity to own one of these down right correct bulls.

Thank you to all the bidders and buyers of our cattle this past year, your confidence in our program keeps us driven in this business. Thank you to all those that have stepped up and looked after everything at home while we've been gone on the road this Fall – we can't say it enough.

As always, we are proud and grateful to be working with Dwayne, Joanne and Jesse of Dwajo and Barclay, Michelle, Cassie, Bailey, and Cooper of SIBL to bring you all the best we are raising. Don't hesitate to call if you have any questions about any of the offerings, or better yet, just come for a visit and we'll give you the tour.

See you on sale day!

Brad, Nicolle, Brynne and Tavianna

Red Cinder Addicted 255G is the kind of bull that you'll mile your pick up truck out trying to find with unparalleled maternal and performance qualities. This is the type of bull that we strive to produce; tremendous length of spine, spring of rib and depth. He carries himself with athleticism and softness of movement. We are hard pressed to find a hole in his genetic makeup. We are particularly proud of his pedigree which contains many that carry our prefixes, both Cinder and Hidden Springs. He also traces back another of the Royal Valley females, Freyja 55M, that have made such a resounding impact on our breeding program. Addicted is a front pasture bull that can be appreciated from any angle and will be sought after on sale day.

SELLING 1/2 POSSESSION & 2/3 SEMEN INTEREST.



RED CINDER FREYJA 55U
GRANDDAM OF LOT 1

RED CINDER ON TILT 160G

CIND 160G JANUARY 20 2019 #2130458

TER-RON PARK PLACE 18Y
RED TER-RON BAZINGA 13B
RED TER-RON AMBER 46W
S: RED GOAD HIGH ROLLER 142'17
RED DWAJO WILDCARD 119S
RED CINDER MISS TOKUN 9X
RED HIDDEN DAISY 9N

RED GOLD-BAR KING V415 107K
RED CINDER GONNA B FAMOUS 55W
RED ROYAL FREYJA 55M
D: RED CINDER BIEBIRD 60Y
RED YY CLOUT 225M
RED MYALTA 225M RENEE 60R
RED MYALTA GM MEG 16M

	BW	WW	YW	MILK
EPD ACTUAL	90	644	1080	-
	2.9	25	41	20

Here's a High Roller son that is super dark in color and possesses a strong foot structure. He has ample muscle pattern and a great disposition. His maternal brother sold in last year's sale to Marvin Brade.

(2)

RED CINDER ROLL THE DICE 601G

BLY 601G MARCH 24 2019 #2126757

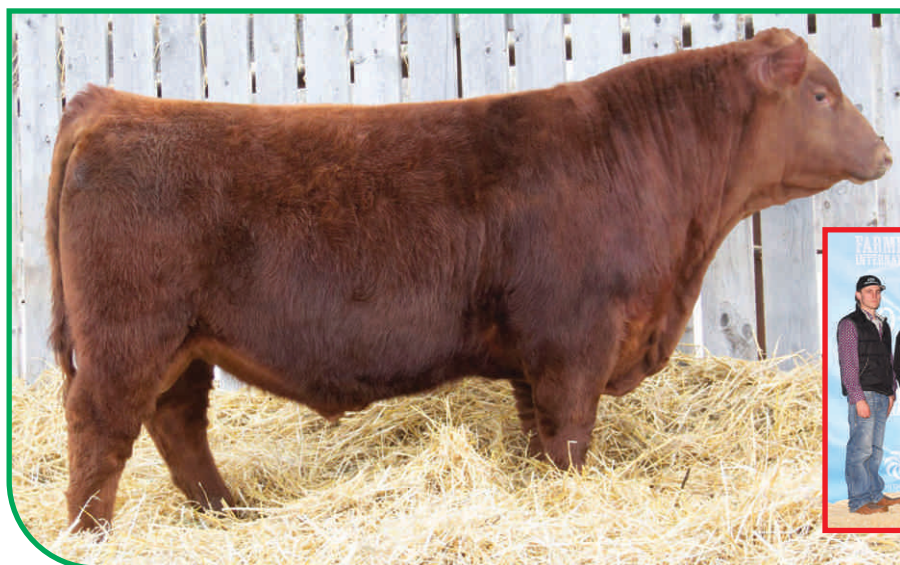
TER-RON PARK PLACE 18Y
RED TER-RON BAZINGA 13B
RED TER-RON AMBER 46W
S: RED GOAD HIGH ROLLER 142'17
RED DWAJO WILDCARD 119S
RED CINDER MISS TOKUN 9X
RED HIDDEN DAISY 9N

	BW	WW	YW	MILK
EPD ACTUAL	92	584	1581	-
	2.0	30	48	18

RED CINDER MARTIN' UP 132P
RED CINDER IN FOCUS 112W
RED HIDDEN SHOWGIRL 112G
D: RED CINDER HEATHER 201Z
RED HOLDEN HI HO 574
RED CINDER HEATHER 101U
RED HOWE MS HEATHER DDH 101G

(3)

Roll The Dice 601G is a Red Goad High Roller 142'17 son. He has more than adequate spring of rib that compliments the muscle pattern through his back third. This pedigree is loaded with some really good Cinder females that produce with exceptional udders. High Roller was the Red Roundup Futurity champion in 2017 and went on to win the Legends of the Fall for the Red Angus at Farmfair the same year. 601G is a bull with a little more birth weight and would do a great job on some cows.



RED CINDER ON TILT 160G - LOT 2



RED GOAD HIGH ROLLER 142'17
SIRE OF LOTS 1 TO 3



RED CINDER HEATHER 201Z - DAM OF LOT 3



RED CINDER ROLL THE DICE 601G - LOT 3



RED CINDER ROCKETS 329G - LOT 4



RED CINDER GLITTER 29B - DAM OF LOT 4



RED ROYAL FREYJA 29M - GRANDDAM OF LOTS 4 TO 6



RED CINDER P.D. 229G - LOT 5

RED CINDER ROCKETS 329G

TPY 329G MARCH 08 2019 #2128052

RED BADLANDS OPPORTUNITY 53Y
RED BRYLOR OTB MARIOTA 90B
RED T-S OLIVIA 706P
S: RED JAS DIPLOMAT 34D
RED STEWART FORMATION 13S
RED FRASER POTEET 12X
RED FRASER POTEET 529R

RED CLAY COLT 21X
RED LONE STONE REVOLVER 138Z
RED LONE STONE JENNA 95U
D: RED CINDER GLITTER 29B
RED LONE STONE PURSUIT 81W
RED CINDER FREYJA 29Y
RED ROYAL FREYJA 29M

	BW	WW	YW	MILK
	81	851	1362	-
BPD ACTUAL	3.8	50	83	21

Rockets is an angular, big ribbed, heavier muscled son of the Red JAS Diplomat 34D; a bull that we purchased for his calving ease and different genetics. Diplomat has given us some really nice sons and functional females. The bottom side of 329's pedigree boasts some of Cinder's most maternal females, starting with none other than Red Royal Freyja 29M. She has produced some stunning progeny, and most notably, Red Cinder Freyja 29E. This pedigree and genetics are flawless and one to build a solid cow foundation on. Rockets dam produced our high seller last year to Nielson Land and Cattle, SK.

4

RED CINDER P.D. 229G

CIND 229G FEBRUARY 23 2019 #2112201

RED LSF SAGA 1040Y
RED PIE SPECIALIST 430
RED PIE PLAYMATE 232
S: RED COCKBURN ASSASSIN 624D
RED LAZY MC HUSTLE 18T
RED COCKBURN CORA 254Z
RED WILBAR CORA 443P

RED BRYLOR SMOKER 64S
RED SLGN X-FILES 006X
RED MEADO-WEST PERSUASION
D: RED CINDER GLAMOUR 29A
RED LONE STONE PURSUIT 81W
RED CINDER FREYJA 29Y
RED ROYAL FREYJA 29M

	BW	WW	YW	MILK
	80	811	1252	-
BPD ACTUAL	1.0	47	80	22

This is a bull that is really a cool individual to evaluate. He has many great qualities, the first of them being an 80 lb BW calving ease prospect. He is long spined and is structurally sound from front to back. We love his skull shape and how he ties his front third into his rib cage. P.D.'s pedigree has some greats; from our sure-fire Red SLGN X-Files sire, Red Cockburn Assassin, and none other than Red Royal Freyja 29M – the cornerstone cow in our program. 29M is a cow like no other at Cinder Angus, she has raised so many great females for our program and others, one of the last ones being the highly sought after and talked about females in North America, Red Cinder Freyja 29E. If there is ever a herd sire prospect that one should invest in, it would be this pedigree. There are two cows on the bottom side of his pedigree that speak volumes of his merit, being that they are both designated elite dams. Nothing could be an easier decision than adding P.D. to your program.

5

RED CINDER TUCKER 429G

CIND 429G FEBRUARY 10 2019 #2110432



RED CINDER COLLECTOR 417G

CIND 417G JANUARY 04 2019 #2110429



RED NBAR HAMLEY S913
RED CRSL TATOO
RED CRSL CHAMPAGNE
S: RED CINDER INK'D 393E
RED LSF RR BULLETPROOF 0375X
RED CINDER CHETA 93B
RED CINDER GLY CHETA LASSIE93S

RED CLAY COLT 21X
RED LONE STONE REVOLVER 138Z
RED LONE STONE JENNA 95U
D: RED CINDER FREYJA 129C
RED LONE STONE PURSUIT 81W
RED CINDER FREYJA 29Y
RED ROYAL FREYJA 29M

	BW	WW	YW	MILK
EPD ACTUAL	81	734	1279	-
	3.1	45	88	19

Here's a calf that will push the scales down and put money in your pocket, but that's not all he does – he checks off all the boxes. He started as an 81 lb calf that's had a very respectable growth curve of 734 lb WW and a 1279 lb YW. His dam is a Red Lonestone Revolver 138Z daughter, which builds some performance into this herd sire prospect. Tucker is another descendant of the phenomenal female producer, Red Royal Freyja 29M. This is a bull that should be on a lot of good cattlemen's radars.

RED NBAR HAMLEY S913
RED CRSL TATOO
RED CRSL CHAMPAGNE
S: RED CINDER INK'D 393E
RED LSF RR BULLETPROOF 0375X
RED CINDER CHETA 93B
RED CINDER GLY CHETA LASSIE93S

RED U2 MISSION STATEMENT 66W
RED BAR 4A COMMANDER 12Z
RED ASPEN SABRENA 92U
D: RED BAR 4A ACUTE 117B
RED GLACIER LOGAN
RED WILLOW CREEK ACUTE 112M
RED WILLOW CREEK ACUTE

	BW	WW	YW	MILK
EPD ACTUAL	76	689	1152	-
	-0.5	28	53	23

Red Cinder Collector 417G is an Ink'd 393E son that is as long as a train with a sweet 76 lb birth weight. Collector has a big foot and is very structurally sound. His dam is a great dispositioned, feminine cow with exceptional udder quality. This is a different pedigree sire that has a superb disposition and would fit many programs.



RED CINDER TUCKER 429G - LOT 6



RED CINDER FREYJA 29E
MATERNAL SISTER TO THE GRANDDAM OF LOTS 4-6



RED CINDER FREYJA 29Y - GRANDDAM OF LOT 6



RED CINDER COLLECTOR 417G - LOT 7



RED CINDER INK'D 393E
SIRE OF LOTS 6 TO 12

RED CINDER TEBORI 33G

TW CIND 33G JANUARY 11 2019 #2128047

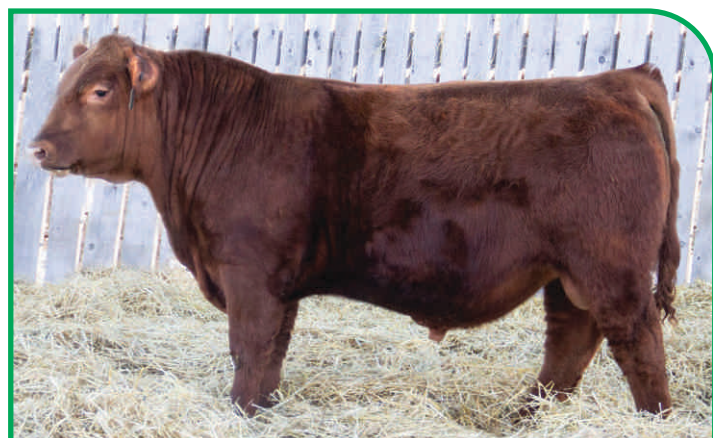
8

RED NBAR HAMLEY S913
RED CRSL TATOO
RED CRSL CHAMPAGNE
S: RED CINDER INK'D 393E
RED LSF RR BULLETPROOF 0375X
RED CINDER CHETA 93B
RED CINDER GLY CHETA LASSIE93S

RED WILDMAN EL GRANDE 5M
RED WILDMAN RIO GRANDE 520R
RED BLUE SPRUCE LARKABA 27F
D: RED DIAMOND T SHAWNEE-RIO 9933
RED BRYLOR NEW TREND 22D
RED CHOPPER K SHAWNEE 98S
RED DIAMOND D SHAWNEE 217H

	BW	WW	YW	MILK
EPD ACTUAL	80	597	1165	-
	3.3	37	73	30

Red Cinder Tebori 33G is a huge muscled, big bodied calf. What a mating this produced from Shawnee and Ink'd. He is big footed and profiles extremely well. His maternal pedigree might be one of the best out there; Lassie 93S, Rio Grande 520R and Brylor New Trend 22D – all leaders in many of the Angus traits. With an 80 lb BW, he will add some grow, as well as docility to any program.



RED CINDER YANTRA 033G

TW CIND 033G JANUARY 11 2019 #2128046

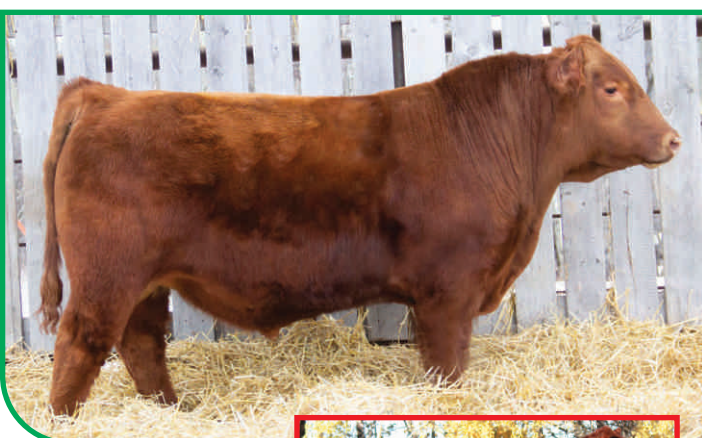
9

RED NBAR HAMLEY S913
RED CRSL TATOO
RED CRSL CHAMPAGNE
S: RED CINDER INK'D 393E
RED LSF RR BULLETPROOF 0375X
RED CINDER CHETA 93B
RED CINDER GLY CHETA LASSIE93S

RED WILDMAN EL GRANDE 5M
RED WILDMAN RIO GRANDE 520R
RED BLUE SPRUCE LARKABA 27F
D: RED DIAMOND T SHAWNEE-RIO 9933
RED BRYLOR NEW TREND 22D
RED CHOPPER K SHAWNEE 98S
RED DIAMOND D SHAWNEE 217H

	BW	WW	YW	MILK
EPD ACTUAL	82	606	1162	-
	3.3	37	73	30

Red Cinder Yantra 033G is the full brother to 33G and they pattern very much alike. Spring of rib, length of spine and a strong pedigree are traits at Cinder that we value. Strong footed, like his brother, he can get out and travel very freely. The Ink'd calves are really stamped alike, with plenty of muscle shape and superb dispositions. These brothers post a +30 milk EPD, which puts them in the top 1% for the Red Angus. These are herd sires that you could retain females from and build a great cow base.



RED CINDER YANTRA 033G
LOT 9



CIND 33B - MATERNAL SISTER TO LOT 9

RED CINDER BLOW OUT 15G

CIND 15G FEBRUARY 16 2019 #2128050

10

RED NBAR HAMLEY S913
RED CRSL TATOO
RED CRSL CHAMPAGNE
S: RED CINDER INK'D 393E
RED LSF RR BULLETPROOF 0375X
RED CINDER CHETA 93B
RED CINDER GLY CHETA LASSIE93S

RED GOLD-BAR KING V415 107K
RED CINDER GONNA B FAMOUS 55W
RED ROYAL FREYJA 55M
D: RED CINDER QUEEN 15A
RED TOWAW PROSPECTOR 137M
RED SF QUEEN 15R
RED SF QUEEN 6L

	BW	WW	YW	MILK
EPD ACTUAL	86	727	1225	-
	3.7	25	45	23

Blow Out 15G has a moderate 86 lb BW, smooth junctured and long sided – patterning himself just like his dam. Queen 15A's bull calf sold to Trent Harrison last year, and was a bull I really appreciated for his calving ease qualities. Blow Out is a front pasture type bull – he will catch your eye when you see him and commands your attention. Grab a hold of one of these Ink'd sons, they are a consistent sire group from top to bottom.





RED CINDER NEO 301G - LOT 11

RED CINDER NEO 301G

CIND 301G FEBRUARY 13 2019 #2128049

RED NBAR HAMLEY S913
RED CRSL TATOO
RED CRSL CHAMPAGNE
S: RED CINDER INK'D 393E
RED LSF RR BULLETPROOF 0375X
RED CINDER CHETA 93B
RED CINDER GLY CHETA LASSIE93S

TLA NORTHERN SAMURAI
RED KBJ SAM'S PROSPECTOR 133Z
KBJ ROUND LASSIE 18T
D: RED CINDER HEATHER 301W
RED CLAYSMORE REDMAN 16B
RED HOWE MS HEATHER DDH 101G
RED MS HEATHER DDH 10Y

	BW	WW	YW	MILK
EPD ACTUAL	79	698	1139	-
	1.4	23	52	19

Neo 301G is another really good Ink'd calf with loads of potential. Neo is a low birth weight bull with a lot of upside, with Red Cinder GLY Cheta Lassie 93S and Red Howe Ms Heather DDH 101G; two of Cinder's foundation cows. His dam is an 11 year old cow that carries a very feminine, youthful look and has an extremely well suspended udder. He is smooth made and has the highly desirable coat pigmentation of dark cherry red. Past progeny have sold to Van Sickles, Richard Roth and Martin Claussen.



CIND 101R
FULL SIBLING TO
THE DAM OF LOT 11

RED CINDER CANVAS 214G

CIND 214G JANUARY 30 2019 #2128048

RED NBAR HAMLEY S913
RED CRSL TATOO
RED CRSL CHAMPAGNE
S: RED CINDER INK'D 393E
RED LSF RR BULLETPROOF 0375X
RED CINDER CHETA 93B
RED CINDER GLY CHETA LASSIE93S

RED K-C "MR E" 5L
RED K-C MR "E" 92N
RED ROBAN SWEET LIPS 3E
D: RED CINDER MABEL 114B
RED CINDER GONNA B FAMOUS 55W
RED CINDER MABEL 14Z
RED CINDER MABEL 4W

	BW	WW	YW	MILK
EPD ACTUAL	82	659	1158	-
	2.7	29	60	20

Red Cinder Canvas 214G is an attractive, smooth fronted bull that has some stretch and rib shape. He is a son of Red Cinder Ink'd 393E, whose pedigree added another dimension to our program. Ink'd has done a stellar job at Cinder and from all reports, he has done a great job at Kobersteins. The dam is a great uddered female out of Red K-C Mr "E" 92N, our calving ease "go to" bull. 214G traces back four generations to Red Cinder Mabel 4W, who is still cranking out some really powerful offspring for us. Red Cinder Mabel 114B's last two progeny have sold to Stan Halwa and the Hodgetts family – two great supporters of our program. Buy this calving ease rascal with confidence.



RED CINDER CANVAS 214G - LOT 12

RED CINDER CANT TOUCH THIS

BLY 683G JANUARY 30 2019 #2091946

RED FINE LINE MULBERRY 26P
RED BRYLOR SMOKER 64S
RED BAR 5 AR MISS SELENA 457N
S: RED SLGN X-FILES 006X
RED BFCK CHEROKEE CNYN 4912
RED MEADO-WEST PERSUASION
RED DFRAAL THEA 107

RED NORTHLINE ROB ROY 122K
RED ROY ROGERS 5604
RED PIE PATTI ANNE 9221
D: RED CINDER BIEBIRD 883B
RED CINDER PURSUIT 101S
RED LONE STONE HERTA 83U
RED MYALTA 225M RENEE 60R

	BW	WW	YW	MILK
EPD ACTUAL	82	650	1125	-
	-1.4	23	40	23

Can't Touch This 683G offers a tremendous family tree and calving ease with a 82 lb BW and an ideal phenotype to be the pick for heifers. His sire, Red SLGN X-Files 006X has produced some terrific herd prospects and very functional females. He is a nice patterned bull with muscle dimension from head to tail, and stacked on a sound frame with an ample sized foot. His disposition is a carry over of his genetics, quiet and respectful. His pedigree boasts many noteables; X-Files, Mulberry, Roy Rogers and Red Cinder Pursuit 101S – whom have all been extremely good female producers. This bull will have replacements that you can hang your hat on.



RED CINDER CAN'T TOUCH THIS - LOT 13



RED CINDER CHARLI 401G

CIND 401G APRIL 15 2019 #2130459

(14)

RED BIEBER ROLLIN DEEP Y118
RED TR LITTLE DEEP 285B
RED TR MISS PATHY 1170Y
S: RED KBJ DEEP 906D
RED MINBURN WINDY 5178
RED KBJ CHETA 971T
RED KBJ HOUTT 935J

RED GOLD-BAR KING V415 107K
RED CINDER GONNA B FAMOUS 55W
RED ROYAL FREYJA 55M
D: RED CINDER HEATHER 201Y
RED HOLDEN HI HO 574
RED CINDER HEATHER 101U
RED HOWE MS HEATHER DDH 101G

	BW	WW	YW	MILK
EPD ACTUAL	87	649	1607	-
	2.0	34	56	22

Charli is one of our youngest calves, but still performed really well. He is another deep, dark cherry red bull with lots of potential. His pedigree has some well proven sires, both top and bottom; Bieber Rollin' Deep, Red Cinder Gonna Be Famous, and Red Holden Hi Ho 574. He has smooth muscle patterning and is plenty hairy. Past bulls have sold to Sheldon Blum and Paul Boulterice.



RED CINDER ROBIN 233G
LOT 15

RED CINDER CARMELLA 233R
DAM OF LOT 15



RED CINDER ROBIN 233G

CIND 233G JANUARY 04 2019 #2128044

(15)

RED LSF SAGA 1040Y
RED PIE SPECIALIST 430
RED PIE PLAYMATE 232
S: RED COCKBURN ASSASSIN 624D
RED LAZY MC HUSTLE 18T
RED COCKBURN CORA 254Z
RED WILBAR CORA 443P

RED K-C "MR E" 5L
RED K-C MR "E" 92N
RED ROBAN SWEET LIPS 3E
D: RED CINDER CARMELLA 233R
RED PIE LO CANYON 912
RED ROYAL CARMELLA 133M
RED ROYAL SAM'S CARMELLA 117E

	BW	WW	YW	MILK
EPD ACTUAL	77	625	1089	-
	2.5	42	73	25

Red Cinder Robin 233G had just a 77 lb BW and will be a calving ease dream. His sire, Red Cockburn Assassin 624D has many high sellers in sales across Canada. Assassin 624D is being recognized as a bull that sires functional, structurally sound cattle that work in many programs. He has done a good job within our herd, siring some moderate made herdsire candidates and females that are keepers. Carmella 233R is a strongly maternal cow that traces back to the foundation cow at Royal Valley Cattle Company, Red Royal Sam's Carmella 117E. This will be her last calf as she has passed on to greener pastures this spring. Buy a bull with confidence, a great herdsire prospect.

RED CINDER MAUI 701G

BLY 701G FEBRUARY 22 2019 #2091926

(16)

RED BADLANDS OPPORTUNITY 53Y
RED BRYLOR OTB MARIOTA 90B
RED T-S OLIVIA 706P
S: RED JAS DIPLOMAT 34D
RED STEWART FORMATION 13S
RED FRASER POTEET 12X
RED FRASER POTEET 529R

RED TINTS BANK STATEMENT T272
RED TR BANK HEIST 44Y
RED TR ROSE 222P
D: RED CINDER HEATHER 601B
RED CINDER IN FOCUS 112W
RED CINDER HEATHER 201Z
RED CINDER HEATHER 101U

	BW	WW	YW	MILK
EPD ACTUAL	81	618	1262	-
	0.1	25	39	23

Maui is a smooth made son of Red JAS Diplomat 34D, whom we purchased for his calving ease and unique pedigree. His dam traces back to the Red Howe DDH Heather 101G; a cornerstone cow that has produced many daughters still working at Cinder. 701G has a big foot and could breed both heifers and cows. A pedigree with Mission Statement and Badlands Opportunity doesn't hurt him either.



RED CINDER CODE TALKER 525G

CIND 525G JANUARY 01 2019 #2110414

17

RED BADLANDS CAPACITY 37W
RED CHOPPER K CAPACITY 308B
CHOPPER K TEWSOXRO 120X
S: RED MAR MAC TOP SECRET 28D
RED COCKBURN RIBEYE 346U
RED MAR MAC SIERA 82Y
RED MCRAE'S SIERA 38U

RED CINDER SMARTIN' UP 132P
RED CINDER IN FOCUS 112W
RED HIDDEN SHOWGIRL 112G
D: RED LONE STONE POTEET 25C
GEIS KODIAK 21'07
RED GEIS POTEET 45'11
RED GEIS POTEET 3'09

EPD ACTUAL	BW	WW	YW	MILK
	89	679	1288	-
	3.7	52	91	30

Code Talker has a little different pedigree coming from the MarMac program in Manitoba. He has an 89 lb BW and a big 1320 lb yearling weight – he has some growth. His dam, a Red Cinder In Focus daughter, traces back to the power bull, Red Cinder Smartin' Up 132P. 525G will add some pounds and new blood to your program.



DWAJO ANGUS

DWAYNE, JOANNE & JESSE EMERY
CAMP CREEK, AB
HOME (780) 674-4410
DWAYNE CELL (780) 305-4209
JESSE'S CELL (780) 284-3490



First off, we would like to thank all of you that have supported us over the last 20 YEARS!

There have been lots of changes my hair was brown and now it is silver. Jesse was a 6-year-old in grade one and now he is a big part of running Dwajo Angus. The On-Target Sale started 20 years ago with Dwajo Angus, Hidden Springs Ranch and MJLC then SIBL & CRM Simmentals were added. Now after 20 years it is Dwajo, Cinder and SIBL; names may have changed but the good cattle, great people to work with and hospitality remain out standing as always. We have 38 bulls in the sale this year some are new sire groups in the reds Night Train a bull we bought out of Denver and High Roller bull that was bought at Red Round Up. In the blacks there is Commando bulls that bull come from Wilbar.

We will be offering 6 open heifers in the sale with a mix of herd sires from Dwajo. They are made right not pushed and will be ready to breed this spring. We will also offer 2 straws of semen from our semen tank if the buyer desires to breed this heifers. Please join us on March 17th for the 20th On Target Bull & Female Sale. Contact Dwayne, Jesse or Joanne if you have any questions about our offering. Remember St Patrick days; your purchases could be your pot a gold at end of the Rainbow.

If you have any questions please do not hesitate to call any of us at Dwajo.
DWAYNE, JOANNE & JESSE EMERY

*P.S. Don't even get me started
on the 36 inches of rain we had...*

Reference Sires



DWAJO REALLY WINDY 60C

(ET) DJE 60C FEBRUARY 08 2015 #1877920

A A R WINDY RIDGE 362
A A R REALLY WINDY 1205
A A R LADY KELTON 2170
S: V D A R REALLY WINDY 4097
VDAR ENTERPRISE 2059
VDAR BLACKBIRD 2031
VDAR ENVIOUS BLACKBIRD 6060

STEVENSON FORTUNE 425C
CRESCENT CREEK FORTUNE 16H
CRESCENT CREEK HEROINE 92B
D: DWAJO ZARA 94K
EVERBLACK MASTERPLAN 007
DWAJO ZARA 6H
DWAJO ZARA 2W

	BW	WW	YW	MILK
EPD ACTUAL	87	778	1264	-
	0.6	44	73	13

This bull has done everything we have asked of him when we decided to flush the Zara 94K cow with VDAR Really Windy. Zara 94Z was one of the best cows we have ever owned at Dwajo Angus. His daughters are already very sought after from the farm and now it will hard to convince the family to let them leave. The bulls he has sired are such a consistent group again this year, with great feet, loads of hair and very docile. This is a sire group you will want to take a serious look at.



BAR-E-L CASSIDY 70C

YHB 70C FEBRUARY 18 2015 #1864862

RING CREEK BARDOLINE 69W
RING CREEK BURL IVES 88Y
HEATHER OF RING CREEK 447W
S: RING CREEK FLYNN 25A
BASIN AMBUSH 7980
RING CREEK AMBUSH LADY 43T
RING CREEK 6371 LADY 1P

GREENS PREMIUM 7578
HF SMOKIN' ACES 105Y
HF ERICA 26T
D: BAR-E-L MAGNOLIA 209A
PLAINVIEW SAUGAHATCHEE 31X
BAR-E-L DUCHESS 119M
BAR-E-L MAGNOLIA 143K

	BW	WW	YW	MILK
EPD ACTUAL	80	795	-	-
	4.4	33	59	23

Last year's bulls at the sale were very well accepted and this year should be no exception; great muscled, deep sided bulls with excellent feet and legs. Cassidy 60C was a bull we obtained from the very good herd at Bar-E-L Angus in 2016. He has averaged 88 lbs at the farm.

Dwajo Black Angus

DWAJO JES GOTHAM 4G

JES 4G JANUARY 07 2019 #2108119

SITZ DASH 10277
BARSTOW CASH
BARSTOW QUEEN W16
S: BAR R BANKROLL 3036
B C C BUSHWACKER 41-93
SILVEIRAS ELBA 4328
SILVEIRAS ELBA 0321

CUDLOBE IN FOCUS 5S
CUDLOBE TOTAL FOCUS 6A
CUDLOBE EXQUISITE LADY 69Y
D: DWAJO JES ERICA 53E
YOUNG DALE YOUNG GUN 67Y
DWAJO ERICA 72B
DWAJO ERICA 27N

	BW	WW	YW	MILK
EPD ACTUAL	84	818	1276	-
	4.0	72	118	22



Gotham is a smooth fronted bull with a lot of performance; that came out of a 2-year-old with an 84lb birthweight. This bull has such good hair; he should be in a pantene commercial! 79G's mother 72B, has been a phenomenal dam. She is deep bodied, smooth fronted and has a wicked udder. 72B has had 4 calves: 1st calf was a heifer bull that we sold in our bull sale, 2nd calf is a female I kept for myself which has raised Gotham 4G; Gotham weaned off at 912lbs and has an adj. yearling weight of 1276lbs. 72B's third calf was high selling Black Angus bull in our On Target Bull Sale this past spring; Dwajo Jes Titan 6F sold for \$12,000 to Lake Road Angus. The 4th calf was a sweet heifer that sold in the Northern Select sale. The Dwajo Jes Erica's are my foundational cow family. Gotham could be put on larger heifers. This is the bull that your heifers will hang posters of, up in the barn!



DWAJO JES GOTHAM 4G - LOT 18



DWAJO JES ERICA 53E
DAM OF LOT 18

BAR R BANKROLL 3036
SIRE TO LOT 18



DWAJO COMMANDO 6G

DJE 6G JANUARY 08 2019 #2115294

EF COMPLEMENT 8088
EF COMMANDO 1366
RIVERBEND YOUNG LUCY W1470
S: WILBAR COMMANDO 406E
BAR-E-L UNFORGIVEN 102U
WILBAR ATALANTA 584B
WILBAR ATALANTA 941U

V D A R REALLY WINDY 4097
DWAJO REALLY WINDY 60C
DWAJO ZARA 94K
D: DWAJO COUNTESS 59E
FRL IMAGE MAKER 543R
DWAJO COUNTESS 44X
DWAJO COUNTESS 129P

	BW	WW	YW	MILK
EPD ACTUAL	62	668	1166	-
	-2.9	32	52	23



Commando 6G is out of Bull we bought from Wilbar for his calving ease and easy fleshing. 6G passes on the same traits top 1% for BW epd. 59E is a Really Windy dam that are making great replacement females for us. With good udders and great dispositions. Looking for a bull for your heifers and sleep all night, 6G is your answer. Heifer Bull.



DWAJO RIGHT ANSWER 19G

DJE 19G JANUARY 13 2019 #2105688

20

SITZ TRAVELER 8180
S A V FINAL ANSWER 0035
S A V EMULOUS 8145
S: DWAJO RIGHT ANSWER 15W
S A V NET WORTH 4200
JAMESVIEW MISS MORRISON 47T
HFI 1176 MORRISON 9M

DUTCH 744 J V
GDAR DUTCH 1508
GDAR BLACKCAP LADY 6402
D: DWAJO PRIDE 52S
WIWA CREEK TREND 51'93
DWAJO PRIDE 26F
DWAJO PRIDE 52C

	BW	WW	YW	MILK
EPD ACTUAL	72	690	1252	-
	-1.3	38	67	21

Right Answer 19G is out of bull we used ourselves and was sold to TRI-R angus of Manitoba. Jesse has a Right Answer daughter 135Y that has produced multiple high selling bulls in our sale. 52S is still producing well in our herd. Producing five bulls through the On-Target sale and two females to Heart Valley Angus and Schulz Angus. Heifer Bull.



DWAJO JES COMMANDO 29G

JES 29G JANUARY 19 2019 #2115298

21

EF COMPLEMENT 8088
EF COMMANDO 1366
RIVERBEND YOUNG LUCY W1470
S: WILBAR COMMANDO 406E
BAR-E-L UNFORGIVEN 102U
WILBAR ATALANTA 584B
WILBAR ATALANTA 941U

CONNEALY REFLECTION
MCATL REFLECTION 120-577
BALA BELL 577 T M
D: BLAIR'S ERICA 201A
BROCKHILL PROPHECY 4P
SOO LINE ERICA 8334
GEIS ERICA 117'93

	BW	WW	YW	MILK
EPD ACTUAL	80	695	1208	-
	-1.2	38	64	26

29G is one of the most powerful Commando calves. He has a lot of style and muscling with wide top. 201A has been a really good cow with an excellent udder; she has raised lots of bull calves that have sold in the bull sale over the years. 80lb BW with a -1.2 BW epd. Heifer Bull.



DWAJO CYCLONE 33G

DJE 33G JANUARY 24 2019 #2105898



A A R REALLY WINDY 1205
V D A R REALLY WINDY 4097
VDAR BLACKBIRD 2031
S: DWAJO REALLY WINDY 60C
CRESCENT CREEK FORTUNE 16H
DWAJO ZARA 94K
DWAJO ZARA 6H

MINBURN FORTUNE 87R
MJLC MAIN EVENT 4U
DWAJO MATILDA 90N
D: MJLC GRACE 19A
BEVERLY HILLS X BOX 522
MJLC GRACE 32T
MJLC GRACE 23P

Cyclone 33G is a bull that looks like his sire. Smooth fronted and nice hip. 33G was ranked No. 2 in weaning index at III. The dam we purchased at Northern Select Sale from MJLC, for her good feet and nice udder. She has produced two females in herd and bull to Triple MP Farms. He is a bull that you would definitely want to keep females out at. Heifer Bull.

RETAINING 1/3 SEMEN INTEREST.

EPD ACTUAL	BW	WW	YW	MILK
	85	772	1216	-
	1.1	46	73	19



DWAJO CYCLONE 33G - LOT 22



MJLC GRACE 19A - DAM OF LOT 22

DWAJO REALLY WINDY 35G

DJE 35G JANUARY 24 2019 #2105899



A A R REALLY WINDY 1205
V D A R REALLY WINDY 4097
VDAR BLACKBIRD 2031
S: DWAJO REALLY WINDY 60C
CRESCENT CREEK FORTUNE 16H
DWAJO ZARA 94K
DWAJO ZARA 6H

YOUNG DALE KNOCK OUT 134U
YOUNG DALE YOUNG GUN 67Y
YOUNG DALE POLLYANNA 30U
D: DWAJO JESTRESS 32B
LOOKOUT VALUE 402P
DWAJO JESTRESS 122T
DWAJO JESTRESS 153R

EPD ACTUAL	BW	WW	YW	MILK
	90	761	1242	-
	2.4	53	86	16

Another Windy bull that has eye appeal and hip. Dam 32B has produced daughter in herd and bulls to Hazel Bluff and a female to Meston Farms. Could be used on heifers.

DWAJO WINDY 36G

DJE 36G JANUARY 24 2019 #2105900

24

A A R REALLY WINDY 1205
V D A R REALLY WINDY 4097
VDAR BLACKBIRD 2031
S: DWAJO REALLY WINDY 60C
CRESCENT CREEK FORTUNE 16H
DWAJO ZARA 94K
DWAJO ZARA 6H

EARLEY GRID POWER 52P
EARLEY GRID POWER 158S
EARLEY BARBARA 15M
D: DWAJO BLACKBIRD 66A
GEIS KODIAK 34/07
WAVENY BLACKBIRD 16W
MINBURN BLACKBIRD 135N

	BW	WW	YW	MILK
EPD ACTUAL	95	717	1287	-
	3.0	44	77	18

36G bull whose dam is 66A that has produced full brother that sold to Krahn Farms in last year sale, and bull to Mexico and female to Mike Podolate. Good useful bull here.



DWAJO WINDY 36G - LOT 24



DWAJO REALLY WINDY 38G - LOT 25



DWAJO JESTRESS 119Z - DAM OF LOT 25

DWAJO REALLY WINDY 38G

DJE 38G JANUARY 25 2019 #2105901

25

A A R REALLY WINDY 1205
V D A R REALLY WINDY 4097
VDAR BLACKBIRD 2031
S: DWAJO REALLY WINDY 60C
CRESCENT CREEK FORTUNE 16H
DWAJO ZARA 94K
DWAJO ZARA 6H

SIX MILE FINAL ANSWER 701T
DWAJO FINAL DOMINATION 33X
DWAJO ZARA 144T
D: DWAJO JESTRESS 119Z
FRL IMAGE MAKER 543R
DWAJO JESTRESS 122X
DWAJO JESTRESS 59M

	BW	WW	YW	MILK
EPD ACTUAL	86	740	1315	-
	2.3	47	78	17

This is 119Z first bull she has had and what a job she has done. 106 index for 205 and 112 for 365 topping the black bulls. 38G has that same great front end, and big hiped. 119Z has also produced two daughters, one to Schulz Angus and one full sister to Sully Gibson from Everblack Angus that was one of the top selling heifers at Northern Select 2018. Could be used on heifers.

SELLING 1/3 INTEREST & FULL POSSESSION.



DWAJO REALLY WINDY 44G

DJE 44G JANUARY 25 2019 #2106378

(26)

AA R REALLY WINDY 1205
V D A R REALLY WINDY 4097
VDAR BLACKBIRD 2031

S: DWAJO REALLY WINDY 60C

CRESCENT CREEK FORTUNE 16H
DWAJO ZARA 94K
DWAJO ZARA 6H

N BAR EMULATION EXT

NICHOLS EXTRA H6

NICHOLS EILEEN MAY F261

D: DWAJO MADGE 1X

REMITALL STONE COLD 635S

DLH MADGE 3U

HAPPYVALE MADGE 62S

	BW	WW	YW	MILK
EPD ACTUAL	95	747	1289	-
	3.3	50	82	21

44G dam has been a top producer for us for many years having five bulls making the On-Target bull sale. Here is a Really Windy bull with a little more jam for cows. Having 106 and 107 indexes for weaning and yearling, that +29 milk number definitely doing the job.



DWAJO REALLY 47G

DJE 47G JANUARY 27 2019 #2106381

(27)

AA R REALLY WINDY 1205
V D A R REALLY WINDY 4097
VDAR BLACKBIRD 2031

S: DWAJO REALLY WINDY 60C

CRESCENT CREEK FORTUNE 16H
DWAJO ZARA 94K
DWAJO ZARA 6H

SIX MILE FINAL ANSWER 701T

DWAJO FINAL DOMINATION 33X

DWAJO ZARA 144T

D: DWAJO GAMMER 107Z

DOUBLE D QUANTUM 4R

DWAJO GAMMER 113X

DWAJO GAMMER 9N

	BW	WW	YW	MILK
EPD ACTUAL	85	668	1226	-
	2.0	36	63	16

Dam has produced two maternal sisters to Schulz Angus and one retained herd. Good complete heifer bull.



DWAJO REALLY WINDY 49G

DJE 49G JANUARY 27 2019 #2106382

(28)

AA R REALLY WINDY 1205
V D A R REALLY WINDY 4097
VDAR BLACKBIRD 2031

S: DWAJO REALLY WINDY 60C

CRESCENT CREEK FORTUNE 16H
DWAJO ZARA 94K
DWAJO ZARA 6H

G D A R EXECUTIVE 727

GDAR SVF CHIEF

L T FOREVER LADY 395 G D A R

D: DWAJO LASS 75C

SIR WMS WAMPUM

MG LASS 2'81

MG LASS 5978

	BW	WW	YW	MILK
EPD ACTUAL	84	682	1155	-
	0.8	29	49	15

Dwajo Lass 75C has some old-time pedigree in her GDAR CHIEF and Sir WMS Wampum who was at Double Tee Bar Angus from which our herd started from back in 1983. A bull with 0.8 epd BW. Heifer bull.

DWAJO REALLY WINDY 50G

DJE 50G JANUARY 27 2019 #2106383

(29)

A A R REALLY WINDY 1205
V D A R REALLY WINDY 4097
VDAR BLACKBIRD 2031
S: DWAJO REALLY WINDY 60C
CRESCENT CREEK FORTUNE 16H
DWAJO ZARA 94K
DWAJO ZARA 6H

H A IMAGE MAKER 0415
FRL IMAGE MAKER 543R
FRL BLACK BEAUTY 2M
D: DWAJO QUEEN GEM 86X
CRESCENT CREEK CHIEF 80G
DWAJO QUEEN GEM 43J
MINBURN QUEEN GEM 71B

	BW	WW	YW	MILK
EPD ACTUAL	91	752	1184	-
	2.9	44	74	23

50G dam goes back to Queen Gem cow family that has worked well for us. 86X has produced maternal sons to Larry Moore and Herve Nadeau out of the On Target Sale. Rated top five in weaning weight. Could be used on heifers.



DWAJO REALLY WINDY 50G - LOT 29



DWAJO QUEEN GEM 86X
DAM OF LOT 29



DWAJO JES REALLY WINDY 51G

JES 51G JANUARY 29 2019 #2106502

(30)

A A R REALLY WINDY 1205
V D A R REALLY WINDY 4097
VDAR BLACKBIRD 2031
S: DWAJO REALLY WINDY 60C
CRESCENT CREEK FORTUNE 16H
DWAJO ZARA 94K
DWAJO ZARA 6H

HF KODIAK 5R
GEIS KODIAK 34'07
GEIS MCHENRY LASS 202'01
D: WAVENY MISTY 37Y
KBJ ROGUE II 203H
DREAM MAKER MISTY 788N
KBJ MISTY 24A

	BW	WW	YW	MILK
EPD ACTUAL	90	707	1225	-
	2.0	41	71	15

51G comes out of 37Y who was purchased out of the Northern Select sale as a bred heifer. She has been on the farm for a while producing some strong heifers who have sold as junior projects and some bull calves that sold in the sale. All around 37Y is a solid functional deep bodied cow. The Really Windy sire has gave this calf a smooth front and some strong muscling. 51G could be used on larger heifers. 90BW with a 2.0 BW epd.



DWAJO REALLY WINDY 58G

DJE 58G JANUARY 31 2019 #2106386

(31)

A A R REALLY WINDY 1205
V D A R REALLY WINDY 4097
VDAR BLACKBIRD 2031
S: DWAJO REALLY WINDY 60C
CRESCENT CREEK FORTUNE 16H
DWAJO ZARA 94K
DWAJO ZARA 6H

D H D TRAVELER 6807
ATLASTA BB TRAVELER 6807 047T
LEACHMAN WENDY 9031
D: DWAJO BARBARAMERE 5X
KBJ SPECIAL RUSS 214S
ATLASTA BB 143U
BB BARBARAMERE NELL 24S

	BW	WW	YW	MILK
EPD ACTUAL	90	713	1235	-
	2.2	41	70	11

A typical Really Windy bull, nice friend hair, and some volume and muscle. 5X has produced a couple of daughters in herd. Bull to Don and Carrie Ferviak and heifer in last year sale to good people at Wilbar. Heifer bull.

DWAJO CASSIDY 59G

DJE 59G JANUARY 31 2019 #2106387

32

RING CREEK BURL IVES 88Y
RING CREEK FLYNN 25A
RING CREEK AMBUSH LADY 43T
S: BAR-E-L CASSIDY 70C
HF SMOKIN' ACES 105Y
BAR-E-L MAGNOLIA 209A
BAR-E-L DUCHESS 119M

S A V ELIMINATOR 9105
JL ELI 2126
JL HOBSON 06 71
D: DWAJO QUEEN GEM 11C
GDAR DUTCH 1508
DWAJO QUEEN GEM 62P
MINBURN QUEEN GEM 71B

	BW	WW	YW	MILK
EPD ACTUAL	88	717	1261	-
	3.0	33	63	25

Cassidy bull out of Bar EL Cassidy who was the high selling two-year-old that we bought with JW Cattle Co. Two bulls have sold out of 11C to Dave Salmon and Meston Farms top end producing dam.



DWAJO JES CASSIDY 62G

JES 62G FEBRUARY 01 2019 #2106507

33

RING CREEK BURL IVES 88Y
RING CREEK FLYNN 25A
RING CREEK AMBUSH LADY 43T
S: BAR-E-L CASSIDY 70C
HF SMOKIN' ACES 105Y
BAR-E-L MAGNOLIA 209A
BAR-E-L DUCHESS 119M

TC FREEDOM 104
GUMBO GULCH CREED 94S
CASSIE OF GUMBO GULCH 58M
D: BLAIRS MISS ESSENCE 502Y
DMM MAKIN' WAVES 43M
DMM MISS ESSENCE 21R
DMM MISS ESSENCE 90K

	BW	WW	YW	MILK
EPD ACTUAL	84	615	1163	-
	4.4	28	49	20

62G is a functional bull with some solid muscling. He comes out of 502Y who is a Gumbo Gulch Creed which is the bull that has tremendous show record winning multiple supreme championships. 502Y has raised some really calves that have sold in the Northern Select sale and the on target bull sale. She is a big bodied more framey cow with an excellent hip. 84 BW could be used on larger heifers as there is size further back in the cow's pedigree.



DWAJO REALLY WINDY 65G

DJE 65G FEBRUARY 2 2019 #2106597

34

A A R REALLY WINDY 1205
V D A R REALLY WINDY 4097
VDAR BLACKBIRD 2031
S: DWAJO REALLY WINDY 60C
CRESCENT CREEK FORTUNE 16H
DWAJO ZARA 94K
DWAJO ZARA 6H

C H QUANTUM 3330
DOUBLE D QUANTUM 4R
G H Y SANTELLA 9M9
D: DWAJO GAMMER 100X
EVERBLACK MASTERPLAN 007
DWAJO GAMMER 55H
MINBURN GAMMER 133D

	BW	WW	YW	MILK
EPD ACTUAL	79	761	1256	-
	2.0	35	62	25

65G dam has been one of our top producing cows. Four bulls that have sold in our On-Target sale. Two heifers also sold to Walsh Cattle and one to Mexico. One in herd. 100X dam 55H is an elite cow that has thirteen calves at our place. Heifer bull.



DWAJO FOUNDATION 73G

DJE 73G FEBRUARY 05 2019 #2131147

35

KESSLERS FRONTMAN R001
MUSGRAVE FOUNDATION
MCATL BLACKCAP JUARA 29-434
S: BORDER BUTTE FOUNDATION 15C
21AR ROUNDUP 7005
CUDLOBE COUNTESS 25X
CUDLOBE COUNTESS 5'07

MOGCK SURE SHOT
KG SURE SHOT 1186
KG EISA EVERGREEN 9426
D: DWAJO GAMMER 115D
EARLEY GRID POWER 158S
DWAJO GAMMER 71Y
DWAJO GAMMER 142S

	BW	WW	YW	MILK
EPD ACTUAL	70	769	1266	-
	0.6	51	90	27

Another good producing young Gammer cow. Has heifer retained in herd 73G who is a Foundation son who is leaving us some good producing females. 73G was our top weaning index bull 113. Which also has been in top 15 percent for BW. Good solid bull here. Heifer bull.



DWAJO REALLY WINDY 77G

DJE 77G FEBRUARY 07 2019 #2106813

36

A A R REALLY WINDY 1205
V D A R REALLY WINDY 4097
VDAR BLACKBIRD 2031
S: DWAJO REALLY WINDY 60C
CRESCENT CREEK FORTUNE 16H
DWAJO ZARA 94K
DWAJO ZARA 6H

R R RITO 707
SINCLAIR RITO LEGACY 3R9
IDEAL 4465 OF 6807 4286
D: DWAJO COUNTESS 17X
GDAR DUTCH 1508
DWAJO COUNTESS 131S
DWAJO COUNTESS 200N

	BW	WW	YW	MILK
EPD ACTUAL	82	688	1194	-
	1.1	30	54	15

17X dam of 77G is a Sinclair Rito Legacy that has done well for us. Producing two bulls to Meunier Farms and two heifers to Walter Schulz. Windy bull that would work well for your heifers. Heifer bull.



DWAJO FOUNDATION 85G

DJE 85G FEBRUARY 09 2019 #2107344

37

KESSLERS FRONTMAN R001
MUSGRAVE FOUNDATION
MCATL BLACKCAP JUARA 29-434
S: BORDER BUTTE FOUNDATION 15C
21AR ROUNDUP 7005
CUDLOBE COUNTESS 25X
CUDLOBE COUNTESS 5'07

CUDLOBE IN FOCUS 5S
CUDLOBE TOTAL FOCUS 6A
CUDLOBE EXQUISITE LADY 69Y
D: DWAJO ZARA 11D
DWAJO DUTCH 65' 68S
DWAJO ZARA 5A
DWAJO ZARA 94K

	BW	WW	YW	MILK
EPD ACTUAL	90	718	1250	-
	4.0	57	97	23

85G dam is a good young cow that produced a heifer to Blair's Ag at last years sale. The Zara cow family is the same family that produced the Windy bull for us who has placed many bulls in the sale this year. Good bull with strong genetics.



DWAJO FOUNDATION 85G
LOT 37



BORDER BUTTE FOUNDATION 15C - SIRE OF LOT 37

DWAJO CASSIDY 99G

DJE 99G FEBRUARY 12 2019 #2107353



RING CREEK BURL IVES 88Y
RING CREEK FLYNN 25A
RING CREEK AMBUSH LADY 43T
S: BAR-E-L CASSIDY 70C
HF SMOKIN' ACES 105Y
BAR-E-L MAGNOLIA 209A
BAR-E-L DUCHESS 119M

S A V ELIMINATOR 9105
JL ELI 2126
JL HOBSON 06 71
D: DWAJO GAMMER 36C
GDAR DUTCH 1508
DWAJO GAMMER 83T
DWAJO GAMMER 55H

	BW	WW	YW	MILK
EPD ACTUAL	79	717	1249	-
	2.4	29	57	26

99G dam 36C has produced two bulls that have sold in On Target sale. Fall brother to Carlor Ranch last year. Same cow family that Crescent Creek picked for pick of the herd for the Angus Foundation sale a heifer calf that was a hard one to let go. Could be used on heifers.



DWAJO REALLY WINDY 106G

DJE 106G FEBRUARY 13 2019 #2107358



A A R REALLY WINDY 1205
V D A R REALLY WINDY 4097
VDAR BLACKBIRD 2031
S: DWAJO REALLY WINDY 60C
CRESCENT CREEK FORTUNE 16H
DWAJO ZARA 94K
DWAJO ZARA 6H

SITZ TRADITION RLS 8702
SOO LINE TRADITION 6020
H A BELETTA 0219
D: DWAJO BLACKBIRD 127U
G D A R TRAVELER 044
DWAJO BLACKBIRD 15R
DWAJO BLACKBIRD 46H

	BW	WW	YW	MILK
EPD ACTUAL	88	727	1211	-
	2.1	43	74	15

106G is out youngest Black bull in the sale and he has the same attributes as his brothers in the sale. The Really Windy 60C produced so consistent for us with great feet under, very docile cattle with loads of hair. 127U is a Soo Line Tradition 6020 daughter that has produced a bull to Brian & Wendy Plummer and females to Heart Valley Angus and Schulz Angus. She also has 2 daughters working in the herd. Could Be Used on Larger Heifers.



Dwajo Red Angus

RED DWAJO HIGH ROLLER 10G

DJE 10G JANUARY 10 2019 #2117643



TER-RON PARK PLACE 18Y
RED TER-RON BAZINGA 13B
RED TER-RON AMBER 46W
S: RED GOAD HIGH ROLLER 142'17
RED DWAJO WILDCARD 119S
RED CINDER MISS TOKUN 9X
RED HIDDEN DAISY 9N

RED TGA RAMBO'S IMAGE 5039R
RED TGA IMAGE 7204T
RED TGA MS ST SUSAN 935J
D: RED DWAJO MARTA 75Y
RED SVR BAR CODE 2K
RED DWAJO MARTA 52M
RED DWAJO MARTA 33J

	BW	WW	YW	MILK
EPD ACTUAL	92	772	1312	-
	1.1	39	61	25

High Roller 10G sire we bought out of Red Roundup with Cinder and BMB Brewin Farms. These are the first bulls to sell out of him, and what a job he has done. 10G has been a stand out since birth, he was top four for WW and top two for YW Index. He is dark red, big footed, volume and hip and a below average BW EPD. 75Y has produced two bulls in On Target Sale and heifers to Matlock Farms and Fraser Angus out of Red Roundup two years ago. Looking for a bull with performance and maternal female to back it up, High Roller 10G could fill that void.

RETAINING 1/3 SEMEN INTEREST



RED DWAJO HIGH ROLLER 10G - LOT 40



RED GOAD HIGH ROLLER 142'17 - SIRE OF LOT 40



RED DWAJO HUCK 13G

DJE 13G JANUARY 10 2019 #2105601



RED COMPASS MULBERRY 449M
RED FINE LINE MULBERRY 26P
RED DUS FAYETTE 8G
S: RED JKC HUCKLEBERRY 701
RED LCHMN WIDE LOAD 1061C
RED LJRA MISS NONE BET F647
RED SODAK EMMA 2111

RED U-2 ALL STAR 1513R
RED DWAJO ALL STAR 10T
RED DWAJO SUPERIOR 4H
D: RED DWAJO WONDER'S BLAZE 50X
RED SHODEREE DYNAMITE 80N
RED DWAJO WONDER'S BLAZE 36S
RED AW WONDER'S BLAZE 8L

	BW	WW	YW	MILK
EPD ACTUAL	90	791	1206	-
	1.8	46	71	24

Huck is a bull who has ton of length and great hair coat. A Mulberry grandson who has done so much in the breed. 13G is in the top ten percent for WW and twenty percent YW. 50X is a cow with good foot and lots of volume a maternal bull sold to Ruch Land and Cattle. Some predictability in this pedigree.

RED DWAJO PROJECT FILE 22G

DJE 22G JANUARY 14 2019 #2105693

42

RED FINE LINE MULBERRY 26P
RED BRYLOR SMOKER 64S
RED BAR 5 AR MISS SELENA 457N
S: RED SLGN X-FILES 006X
RED BFCK CHEROKEE CNYN 4912
RED MEADO-WEST PERSUASION
RED DFRAAL THEA 107

RED TOWAW ARMAGEDDON 171S
RED ANCHOR 1 ARMAGEDDON 63X
RED ANCHOR 1 BEULA 65U
D: RED DWAJO CR LASS 96A
RED SOO LINE MR H0904 6013
RED DWAJO CR LASS 74U
DWAJO CR LASS 74R

	BW	WW	YW	MILK
EPD ACTUAL	78	629	1245	-
	-1.5	21	38	21

Project File 22G is out of X-Files bull that has worked well at Cinder Angus. 22G's dam produced heifer sold to Wintering Hills Land at Red Roundup and bull to Brockman Farms. 22G EPD for BW is in the top ten percent of breed but still had a index of twelve percent for YW. Heifer bull.

RED DWAJO STRONGMAN 28G

DJE 28G JANUARY 18 2019 #2105869

43

RED TROTTERS STRONGHOLD 156
RED SPUR STRONGHOLD 2171C
RED SSR GRAVITY'S LEAGUE Y217
S: RED DWAJO STRONG BAR 11E
RED SVR BAR CODE 2K
RED DWAJO LUCY 73N
DWAJO LUCY 79K

RED JENSEN SKY 611X
RED WILDMAN CRANK 431B
RED WILDMAN CHIEFTESS 007X
D: RED DWAJO PRIDE 8E
RED SODER CANYON 126M
RED DWAJO PRIDE 29S
RED BRYLOR PRIDE 49F

	BW	WW	YW	MILK
EPD ACTUAL	82	714	1150	-
	1.7	40	66	19

28G is out of DJE 11E working at Cinder Angus now. 11E is a bull we raised and used for his dam and was one of our top producing cows for years being an elite cow having fourteen calves at our place with the 106 Ratio. 8E pedigree is just as impressive, her dam is 29S who is a Premier Dam and has had twelve calves at our place. Looking for a bull with proven genetics, 28G has them in spades. Heifer bull.

RED DWAJO TOMMY 30G

DJE 30G JANUARY 19 2019 #2105897

44

RED VGW GAME PLAN 816
RED SIX MILE GAME FACE 164Y
RED SIX MILE LAKOTO 35W
S: RED TWG TOMMY JACK 166A
RED FINE LINE MULBERRY 26P
RED DAMAR PASSION X166
RED DFRA JOPLIN 501L

RED SOO LINE MR H0904 7076
RED TER-RON WALLACE 142W
RED TER-RON BOBBIE 93T
D: RED LAURON JILL 123B
RED LAZY R C MONTE CARLO 375N
RED LAURON JILL 27S
RED LAURON JILL 45P

	BW	WW	YW	MILK
EPD ACTUAL	90	701	1231	-
	3.4	33	53	21

Dwajo Tommy 30G is thick and masculine bull, has the herd bull look. A paternal sister sold to Taivanne Yoder at Red Roundup and ended up in final drive for the fraternity. The dam 123B has produced a female in herd and heifer to Brooklyn Holt that was bought at Northern Select Sale. Tommy can definitely add thickness in your herd.





RED DWAJO STOUT 52G

DJE 52G JANUARY 29 2019 #2116575

(45)

RED SSRK STOUT Y008
RED HEART VALLEY STOUT 17A
RED DWAJO INDIGO 131Y
S: RED HEART VALLEY STOUT 25D
RED YY DESIGNER 64X
RED HEART VALLEY DIAMOND 45A
RED ASPEN DIAMOND 31S

RED SOO LINE MR H0904 367P
RED SOO LINE MR H0904 6013
CRESCENT CREEK ANNIE 26F
D: RED DWAJO CR LASS 74U
RED GOLD-BAR MESSENGER 206M
DWAJO CR LASS 74R
CARRUTHERS LASS 6F

	BW	WW	YW	MILK
EPD ACTUAL	90	686	1193	-
	1.7	26	48	18

Stout 52G sure came from the good people at Heart Valley Angus. Bought him for his thickness and good foot. The dam 74U has produced bull to Tymkow angus and two females retained in herd, one is the dam of 22G. Could be used on heifers.



RED DWAJO STOUT 63G

DJE 63G FEBRUARY 01 2019 #2116576

(46)

RED SSRK STOUT Y008
RED HEART VALLEY STOUT 17A
RED DWAJO INDIGO 131Y
S: RED HEART VALLEY STOUT 25D
RED YY DESIGNER 64X
RED HEART VALLEY DIAMOND 45A
RED ASPEN DIAMOND 31S

RED BCAR WILD CARD
RED KBJ WILD CARD 1024S
RED DWAJO LASSIE 74N
D: RED K F ROSA 54W
RED SSS HIGH MARK 272D
RED WWF ROSA 58K
RED WWF ROSA 18F

	BW	WW	YW	MILK
EPD ACTUAL	87	652	1122	-
	2.1	24	44	16

63G'S dam goes back to Wild Card 1024S who has a different twist in pedigree. She has produced three daughters to purebred herds, Schulz, Family Ties, and Steve Hodgetts. Stout 63G could be used on heifers.



RED DWAJO
LOCOMOTIVE 69G
LOT 47

RED TC NIGHT TRAIN 26E
SIRE OF LOT 47



RED DWAJO LOCOMOTIVE 69G

DJE 69G FEBRUARY 04 2019 #2115328

(47)

RED WEBR DOC HOLLIDAY 2N
RED WEBER NIGHT TRAIN 324
RED BJF LANA'S EQUAL 8021U
S: RED TC NIGHT TRAIN 26E
RED NBAR HAMLEY S913
RED TC LOLA 86W
RED TC LOLA 52R

RED BJR EXCEL 149-5176
RED ASPEN EXCEL 89H
RED BJR LAKOTA 968-794
D: RED ASPEN RUBY 4S
RED BJR HI HO 319-969
RED ASPEN RUBY 98H
RED BJR JEAN 729-4H31

	BW	WW	YW	MILK
EPD ACTUAL	80	743	1236	-
	-0.4	28	46	18

69G is out of TC Night Train. A bull we bought in Denver. Night Train was their lead off bull for TC Reds who had Reserve champion pen of three bulls. Night Train also has a couple daughters in the sale. 69G'S dam 4S we bought from Aspen Angus who was our choice of their pick of the pen. She has produced well for us with heifers sold to RJK and Silver Spur Ranch in Colorado. Three females retained in herd and a bull in last years sale to Willisicroft Bros. Heifer bull.

RED DWAJO PETERBILT 66G

DJE 66G FEBRUARY 03 2019 #2106809

48

RED PIE GAME ON 9109
RED SSS POKER FACE 136Y
RED SSS ELBA 132M
S: RED TOPHAM PETERBILT 415B
RED FLYING K PATRICK 85S
RED TOPHAM MS BEULAH 845U
RED TOPHAM MS BEULAH 657S

RED BAR-E-L WARDEN 144W
RED T-K RECOIL 72Y
RED T-K ANNA 54T
D: RED DWAJO PRIDE 32C
RED TGA CR SAKE 6005S
RED DWAJO PRIDE 84W
RED DWAJO PRIDE 29S

	BW	WW	YW	MILK
EPD ACTUAL	85	783	1205	-
	1.1	44	77	20

66G is a Peterbilt son who is dark red, good footed, and heavy muscled. His presence in the pen makes him a true piece of breeding material. 66G was the 2nd highest at Weaning with a 111 Index. This is a bull that is a must-see kind at the sale. His dam 32C, is a good young cow that has produced a daughter to Barry and Krista Williams. Real nice heifer bull.



RED DWAJO PETERBILT 66G - LOT 48



RED DWAJO
NIGHTMAN 82G
LOT 49



RED DWAJO SUPERIOR 29W - DAM OF LOT 49

RED DWAJO NIGHTMAN 82G

DJE 82G FEBRUARY 08 2019 #2115331

49

RED WEBR DOC HOLLIDAY 2N
RED WEBER NIGHT TRAIN 324
RED BJF LANA'S EQUAL 8021U
S: RED TC NIGHT TRAIN 26E
RED NBAR HAMLEY S913
RED TC LOLA 86W
RED TC LOLA 52R

RED TGA RED CR SAKE 3018N
RED TGA SAKE 5024R
RED TGA MISS LADY 3095N
D: RED DWAJO SUPERIOR 29W
RED GEIS PRIME RIB 411
RED DWAJO SUPERIOR 4H
RED BRETON SUPERIOR 39F

	BW	WW	YW	MILK
EPD ACTUAL	90	687	1287	-
	2.1	31	55	23

Another Night Train son who has a dam that has placed three maternal brothers in the On Target Sale to Jubilee, Karen Letts, Les Charlet that have supported multiple times through out the years. We have four daughters in our herd because they work. 29W is out of the 4H cow that produced bulls like Gladiator, Wild Card 119S, All Star 10T. Strong genetics in this bull's pedigree.

RED DWAJO NIGHTTRAIN 93G

JES 93G FEBRUARY 10 2019 #2115333

(50)

RED WEBR DOC HOLLIDAY 2N
RED WEBER NIGHT TRAIN 324
RED BJF LANA'S EQUAL 8021U
S: RED TC NIGHT TRAIN 26E
RED NBAR HAMLEY S913
RED TC LOLA 86W
RED TC LOLA 52R

RED DWAJO GLADIATOR 32L
RED DWAJO SORCERER 3B
RED ACC BONNIE 2Z
D: RED DWAJO LUCY 118E
RED T-K RECOIL 72Y
RED DWAJO LUCY 104C
RED DWAJO LUCY 21T

	BW	WW	YW	MILK
EPD ACTUAL	76	767	1258	-
	0.4	41	68	22

93G comes out of the Lucy cow family (going back to 21T and 73N) which has done phenomenal work at Dwajo. The cow family has excellent udders on all the cows with slim shoulder and brisket fronts. 93G is out of the Night Train bull who is new to Dwajo angus this bull gives exceptional bone and growth to his calves. This bull will very easily be a heifer bull. 76 BW 0.4 BW epd.

RED DWAJO PETERBILT 97G

DJE 97G FEBRUARY 11 2019 #2107351

(51)

RED PIE GAME ON 9109
RED SSS POKER FACE 136Y
RED SSS ELBA 132M
S: RED TOPHAM PETERBILT 415B
RED FLYING K PATRICK 85S
RED TOPHAM MS BEULAH 845U
RED TOPHAM MS BEULAH 657S

RED CORNER CREEK CASH 2R
RED SOO LINE REVOLUTION 8084
RED SOO LINE RHONDA 5109
D: RED DWAJO LASS 140Y
RED GOLD-BAR MESSENGER 206M
DWAJO CR LASS 74R
CARRUTHERS LASS 6F

	BW	WW	YW	MILK
EPD ACTUAL	88	695	1145	-
	1.2	31	50	16

A Peterbilt son who is dark red with a nice front end and some hip. Dam produced bull to Karen Letts in last years sale. Heifer bull.

RED DWAJO PETERMAN 104G

DJE 104G FEBRUARY 13 2019 #2107357

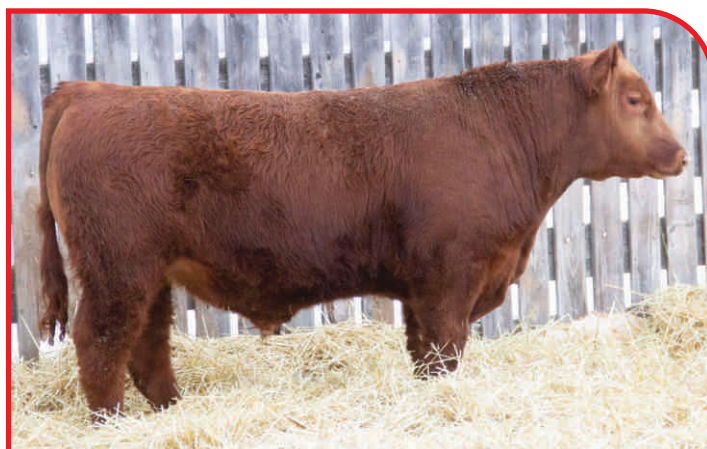
(52)

RED PIE GAME ON 9109
RED SSS POKER FACE 136Y
RED SSS ELBA 132M
S: RED TOPHAM PETERBILT 415B
RED FLYING K PATRICK 85S
RED TOPHAM MS BEULAH 845U
RED TOPHAM MS BEULAH 657S

RED BAR-E-L WARDEN 144W
RED T-K RECOIL 72Y
RED T-K ANNA 54T
D: RED DWAJO LUCY 145C
RED SOO LINE MR H0904 6013
RED DWAJO LUCY 119W
RED CLAYSMORE LUCY 11B

	BW	WW	YW	MILK
EPD ACTUAL	89	698	1191	-
	1.8	36	63	17

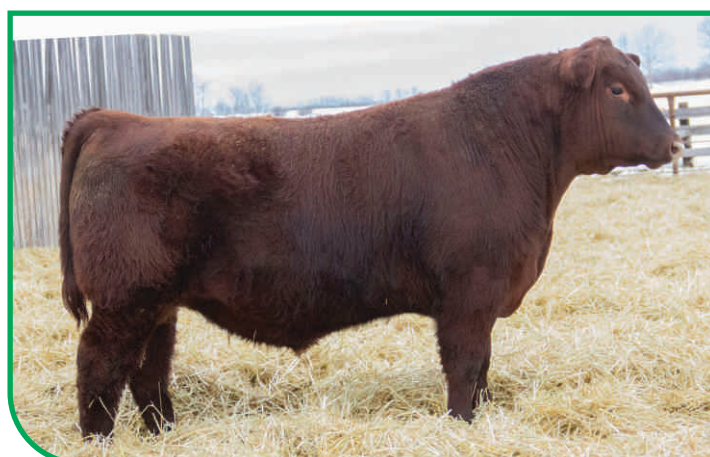
104G is out of a good young Recoil daughter. The Recoils have made good females for us with nice udders, good feet, and tons of volume. 145C is no different. Recoil got injured this winter and was still working at nine years old and they say show bulls don't last. 104G grandam is an Elite cow who is still working at our place. Heifer bull.



RED DWAJO
PETERBILT 97G
LOT 51



RED TOPHAM PETERBILT 415B - SIRE OF LOT 51



RED DWAJO HIGH ROLLER 115G

DJE 115G FEBRUARY 16 2019 #2117647

(53)

TER-RON PARK PLACE 18Y
RED TER-RON BAZINGA 13B
RED TER-RON AMBER 46W
S: RED GOAD HIGH ROLLER 142'17
RED DWAJO WILDCARD 119S
RED CINDER MISS TOKUN 9X
RED HIDDEN DAISY 9N

RED BAR-E-L WARDEN 144W
RED T-K RECOIL 72Y
RED T-K ANNA 54T
D: RED DWAJO LUCY 100C
RED SVR BAR CODE 2K
RED DWAJO LUCY 73N
DWAJO LUCY 79K

	BW	WW	YW	MILK
EPD ACTUAL	90	744	1172	-
	3.1	38	62	21

High Roller bull out of young cow 100C that has two daughters retained in herd. 115G has above average EPD growth numbers. Good usable bull here.



RED DWAJO BIG ROLLER 125G

DJE 125G FEBRUARY 25 2019 #2117650

(54)

TER-RON PARK PLACE 18Y
RED TER-RON BAZINGA 13B
RED TER-RON AMBER 46W
S: RED GOAD HIGH ROLLER 142'17
RED DWAJO WILDCARD 119S
RED CINDER MISS TOKUN 9X
RED HIDDEN DAISY 9N

RED VGW OLY 903
RED BIEBER OLY Y390
RED BIEBER TANYA 201W
D: DWAJO MISTY 15C
RED DWAJO ALL STAR 10T
DWAJO MISTY 45X
KBJ MISTY 179R

	BW	WW	YW	MILK
EPD ACTUAL	92	757	1273	-
	2.5	42	68	20

Another High Roller bull out of 15C who has produced female to Hazel Bluff, and one retained in herd. Big Roller has performance behind him with Indexes 106 and 105 WW and YW.



RED DWAJO PETERBILT 130G

DJE 130G MARCH 04 2019 #2116251

(55)

RED PIE GAME ON 9109
RED SSS POKER FACE 136Y
RED SSS ELBA 132M
S: RED TOPHAM PETERBILT 415B
RED FLYING K PATRICK 85S
RED TOPHAM MS BEULAH 845U
RED TOPHAM MS BEULAH 657S

RED VGW OLY 903
RED BIEBER OLY Y390
RED BIEBER TANYA 201W
D: RED DWAJO LUCY 137B
RED SVR BAR CODE 2K
RED DWAJO LUCY 73N
DWAJO LUCY 79K

	BW	WW	YW	MILK
EPD ACTUAL	90	784	1196	-
	1.3	41	70	22

Peterbilt 130G is the youngest bull in the pen. Spring Bull Champion at Farm Fair. Dam is out of the Lucy cow family that has produced a lot of our top producers. Maternal brothers to Poplar Grove and Dean McCoy out of the On-Target Sale. Heifer bull.



RED DWAJO
PETERBILT 130G
LOT 55



RED DWAJO LUCY 137B - DAM OF LOT 55

Open Heifers

RED DWAJO RUBY 25G

DJE 25G JANUARY 17 2019 #2116569

(56)

RED SSRK STOUT Y008
RED HEART VALLEY STOUT 17A
RED DWAJO INDIGO 131Y
S: RED HEART VALLEY STOUT 25D
RED YY DESIGNER 64X
RED HEART VALLEY DIAMOND 45A
RED ASPEN DIAMOND 31S

RED VGW OLY 903
RED BIEBER OLY Y390
RED BIEBER TANYA 201W
D: RED DWAJO RUBY 101B
RED ASPEN EXCEL 89H
RED ASPEN RUBY 4S
RED ASPEN RUBY 98H

	BW	WW	YW	MILK
EPD ACTUAL	78	647	-	-
	-0.3	29	53	20

Red Dwajo Ruby 25G is a daughter of a new sire group for us, Red Heart Valley Stout 25D, a bull we purchased with Roseholm Angus from Heart Valley Angus, Wanham, Ab. Her dam, Red Dwajo Ruby 101B is a Red Bieber Oly Y390 daughter that has given us 1 bull commercially, 1 female kept in herd and 1 female to Lisa Van Loon. A very productive cow family from Aspen Hill Angus. Ruby 4S the granddam is also the dam to DJE 69G, Lot 48.

RED DWAJO RUBY 70G

DJE 70G FEBRUARY 4 2019 #2115329

(57)

RED WEBR DOC HOLLIDAY 2N
RED WEBER NIGHT TRAIN 324
RED BJF LANA'S EQUAL 8021U
S: RED TC NIGHT TRAIN 26E
RED NBAR HAMLEY S913
RED TC LOLA 86W
RED TC LOLA 52R

RED TROTTERS STRONGHOLD 156
RED SPUR STRONGHOLD 2171C
RED SSR GRAVITY'S LEAGUE Y217
D: RED DWAJO RUBY 84E
RED BIEBER OLY Y390
RED DWAJO RUBY 101B
RED ASPEN RUBY 4S

	BW	WW	YW	MILK
EPD ACTUAL	88	661	-	-
	2.5	37	63	19

Ruby 70G is a prime example of what the Ruby cow family as we spoke about for Lot 56 does for us. 70G is out of a first calving heifer and out of Red TC Night Train 26E, a bull that will get some more time servicing cattle at the farm.



RED DWAJO HONEY 31G

DJE 31G JANUARY 20 2019 #2115325

(58)

RED WEBR DOC HOLLIDAY 2N
RED WEBER NIGHT TRAIN 324
RED BJF LANA'S EQUAL 8021U
S: RED TC NIGHT TRAIN 26E
RED NBAR HAMLEY S913
RED TC LOLA 86W
RED TC LOLA 52R

RED TOWAW ARMAGEDDON 171S
RED ANCHOR 1 ARMAGEDDON 63X
RED ANCHOR 1 BEULA 65U
D: RED DWAJO HONEY 134B
RED DIMLER INDEED 92R
RED LONE STONE HONEY 12X
RED MYALTA 104H RUE 32R

	BW	WW	YW	MILK
EPD ACTUAL	82	631	-	-
	2.9	39	63	20

Red Dwajo Honey 31G is a one of the first daughters to sell from our new outcross herdsire, Red TC Night Train 26E. She is made right with an excellent hair coat and strides very well in the pen.





DWAJO DURUBA 11G
LOT 59



OXBOW KURUBA 58E
GRANDDAM TO LOT 59

DWAJO DURUBA 11G

RC DJE 11G JANUARY 10 2019 #2117644

(59)

TER-RON PARK PLACE 18Y
RED TER-RON BAZINGA 13B
RED TER-RON AMBER 46W
S: RED GOAD HIGH ROLLER 142'17
RED DWAJO WILDCARD 119S
RED CINDER MISS TOKUN 9X
RED HIDDEN DAISY 9N

RED PINE MEADOW 14P
RED SSS ZAMA PINE 37S
RED SSS DYAMA 503M
D: DWAJO DURUBA 140X
LEACHMAN RIGHT TIME
OXBOW DURUBA 58E
RED BRYLOR DURUBA 14X

	BW	WW	YW	MILK
EPD ACTUAL	87	629	-	-
	1.5	33	52	21

Dwajo Duruba 11G is a Blk/Red Carrier female from the Oxbow Duruba 53E donor female. On the dam side such legends as Leachman Right Time and Red SSS Zama Pine 37S make this female one to defiantly take a serious look at. Sire side has the very powerful and good footed Red Goad High Roller 142'13, the sire of some of our best bulls in the offering. 1 daughter to Steve and Connie Hodgetts and 2 females in production in the herd.

DWAJO HENRIETTA 45G

DJE 45G JANUARY 26 2019 #2106379

(60)

A A R REALLY WINDY 1205
V D A R REALLY WINDY 4097
VDAR BLACKBIRD 2031
S: DWAJO REALLY WINDY 60C
CRESCENT CREEK FORTUNE 16H
DWAJO ZARA 94K
DWAJO ZARA 6H

EARLEY GRID POWER 52P
EARLEY GRID POWER 158S
EARLEY BARBARA 15M
D: DWAJO HENRIETTA 119A
BOYD NEW DAY 8005
JL HENRIETTA 06 28
HENRIETTA OF PEAK DOT 795P

	BW	WW	YW	MILK
EPD ACTUAL	87	619	-	-
	2.7	39	68	20

45G is another top end Dwajo Really Windy 60C daughter that is very similar to all of the females that Dwajo Angus have been offering over the past 2 years and many have been high sellers or front-end pasture females. Joanne will soon not let many more leave the farm. Her dam is a real productive one with 1 female to Joe Schulz and 2 bulls to Stypula Farms and SCH Farms Ltd.



DWAJO JESTRESS 17G

DJE 17G JANUARY 13 2019 #2115297

(61)

EF COMPLEMENT 8088
EF COMMANDO 1366
RIVERBEND YOUNG LUCY W1470
S: WILBAR COMMANDO 406E
BAR-E-L UNFORGIVEN 102U
WILBAR ATALANTA 584B
WILBAR ATALANTA 941U

CUDLOBE IN FOCUS 5S
CUDLOBE TOTAL FOCUS 6A
CUDLOBE EXQUISITE LADY 69Y
D: DWAJO JESTRESS 113E
YOUNG DALE YOUNG GUN 67Y
DWAJO JESTRESS 32B
DWAJO JESTRESS 122T

	BW	WW	YW	MILK
EPD ACTUAL	60	646	-	-
	-2.8	44	69	24

Jestress 17G is out of a first calving Cudlobe Total Focus 6A daughter that we sure really like already. Her granddam Jestress 32B has a bull in the sale, DJE 35G, Lot 23. The Jestress cow family is one that is treasured at Dwajo Angus. Her sire, Wilbar Commando 406E is a calving ease sire that we obtained from the Willms family in Sask.



SIBL SIMMENTALS

BARCLAY & MICHELLE SMITH & FAMILY • IVAN & LINDA SMITH
BARCLAY'S CELL (780) 305-6716



R PLUS UPPERCUT 6103D

LRPS 6103D FEB 12 2006 #1189994
BLK POLLED PUREBRED

ELLINGSON LEGACY M229
MR NLC UPGRADE U8676
MS NLC MOJO S6119B
S: MR TR HAMMER 308A ET
CNS DREAM ON L186
SVFHS EXPECTING A DREAM
SVF/NJC EXPECTATION N206

R PLUS BLACKEDGE
R PLUS MCSTEAMY 8028U
MISS R PLUS 4126P
D: MISS R PLUS 1017Y
HC POWER DRIVE 88H
TRIPLE C POWER TIME M67K
TCF SSF KF OUR TIME

BW	WW	YW	CE	MCE	MW	M
90	830	1616	-	-	-	-
2.6	86.7	139.3	8.4	3.5	66.7	23.3

Uppercut was the lead off and \$50,000 high selling bull in the highly decorated 2017 R Plus Bull sale. Uppercut gained a lot of popularity during his time at stud. We felt it was important to keep him exclusive for the first year as we had invested so heavily. Well I believe that was a wise decision as the first calves are some of our very best. Uppercut sired our champion get of sire at Farmfair International in November and then the high selling heifer calf at Transcon's Red and Black Sale in December. The pen of 3 bulls that we had in Camrose at the Canadian Bull Congress were 2nd in their class. When we released some limited semen packs some of the very top breeders in the country took advantage and utilized Uppercut. For the first time we offered semen publicly at the New Year's Resolution sale and it was well accepted. I cannot wait to calve the first set of daughters as they look to have tremendous potential. Do not miss one of the few chances you have to acquire a son of the now deceased R Plus Uppercut 6103D.

R PLUS CAPITAL 6233D

LRPS 6233D FEB 26 2006 #1191914
BLK POLLED PUREBRED

CNS DREAM ON L186
WS PILGRIM H182U
WS MARLA 276M
S: PROFIT
MR HOC BROKER
WAGR PANARAMA 204Z
3C MELODY M668 MZ

3C FULL FIGURES C288 BLK
TWIN CHIEF PRINCE 203P
TWIN CHIEF MAGIC 23M
D: MISS R PLUS 7086T
LFE BRING IT BLACK 811K
WFL MS 933J BLACK 5013R
WFL BLACK 933 79L

BW	WW	YW	CE	MCE	MW	M
90	766	1454	-	-	-	-
4.7	67.8	96.8	6.2	2.1	50.9	17.0

This son of Profit has sired a very eye appealing group of progeny that are awesome haired and big boned. First daughter shown was Intermediate Heifer calf Champion in Olds and Reserve Junior Heifer Calf Champion at Farmfair and sold to WJ Simmentals.

Welcome to the 20th Annual On Target Bull and Female Sale. It is our honour to be a part of this tremendous group of breeders and be a contributor to this sale. Each and every year we as breeders strive to provide you, our tremendous clients with the very best we can from new genetics to the most phenotypically correct specimen, to those individuals that will have an impact on your herd for years to come. The old cliché is that this is by far our best group to date. I am going to skip that part this year and share just the following: Without the great people we have been able to meet in the beef industry we would not be here today. It has allowed for us to acquire new and diverse genetics, spend time with our families, travel on vacations and to shows and sales and offer you this diverse set of bulls today. Over the past few years we have been partnering with Mike McCart of Alliance Simmentals to offer you some darn good bulls and Mike has really upped the ante this year with four of the top bulls he has ever produced. New this year will be our partnership with KD Simmentals, Trevor, Kristi, Cassidy and Kayden Liboiron. Trevor has a very keen eye and a passion for acquiring the good ones. The bulls on offer from this partnership have been raised with ours since August and have been evaluated and culled on the same very stringent criteria. Of course all of these individuals on offer will sell with the same high quality guarantee and the assurance that we will make sure you are happy and satisfied with your purchase. These bulls are raised with longevity in mind and we have increased the area of our bull pen again this year to ensure the bulls are getting lots of exercise to go along with their high forage diet of silage, hay and the Bullseye pellets.



BLI GRACE 905G
DAUGHTER OF R PLUS
UPPERCUT 6103D



BLI GAUCHO 910G

HOMO POLLED BY PEDIGREE

CA-BPG1278127 BLI 910G 14 FEBRUARY 2019



The longtime favorite at home that has represented our breeding program everywhere we have displayed cattle over the past year. Gauchó is a moderate framed meat wagon and has perhaps the best temperament of any bull we have raised. Excellent dam and grand dam and the first son of UpperCut we have offered.

MR NLC UPGRADE U8676
MR TR HAMMER 308A ET
SVF/HS EXPECTING A DREAM

S: R PLUS UPPERCUT 6103D

R PLUS MCSTEAMY 8028U

MISS R PLUS1017Y

TRIPLE C POWER TIME M67K

R PLUS RELOAD 2006Z

R PLUS HITMAN 4194B

MISS R PLUS 79X

D: BLI DIXIE 601D

LITTLE MAN'S EYECANDY103Z

SNIDER'S CHARMED

BBN MISS STAR 38S

- Reserve Champion Simmental Bull 2019 AYCS
- Reserve Intermediate Champion Bull Calf 2019 Olds Fall Classic
- 2nd in Class Farmfair International 2019
- Member of Champion Get of Sire Farmfair 2019
- Member of Pen of 3 Canadian Bull Congress 2nd in Class

BW	WW	YW	CE	MCE	MW	M
88	953	-	-	-	-	-
2.2	82.0	126.1	8.4	3.7	63.1	22.1



BLI GAUCHO 910G - LOT 62



BLI DIXIE 601D - DAM OF LOT 62

BLI GRENADE 911G

HOMO POLLED / HETERO BLACK
CA-BPG1288096 BLI 911G 14 FEBRUARY 2019

MR NLC UPGRADE U8676
MR TR HAMMER 308A ET
SVF/HS EXPECTING A DREAM
S: R PLUS UPPERCUT 6103D
R PLUS MCSTEAMY 8028U
MISS R PLUS1017Y
TRIPLE C POWER TIME M67K

LFE GOTHAM 819Y
LFE THE RIDDLER 323B
LFE BS CHARO 23Y
D: BLI MISS ARNOLD 652D
LFE DREAMING RED 503S
LFE RS MISS ARNOLD 609U
MISS ARNOLD L2539

BW	WW	YW	CE	MCE	MW	M
103	845	-	-	-	-	-
2.7	77.7	121.7	7.2	3.8	59.1	20.2

Super hairy, soft made, big hipped, wide topped and with the awesome Uppercut temperament. Grenade stems from our highest dollar producing cow in 609U who was also the high selling lot in our Half the Herd production sale in 2018. Add LFE Riddler into the mix and you have a genetic combination that is destined to breed on and produce the right kind of profit earning progeny. Grenade was part of the display team at both Farmfair and Canadian Bull Congress.

BLI KAL KNOCKOUT 9G

HETERO BLACK / POLLED
CA-BPG1287167 LIBY 9G 20 FEBRUARY 2019

MR NLC UPGRADE U8676
MR TR HAMMER 308A ET
SVF/HS EXPECTING A DREAM
S: R PLUS UPPERCUT 6103D
R PLUS MCSTEAMY 8028U
MISS R PLUS1017Y
TRIPLE C POWER TIME M67K

MR NLC SUPERIOR S6018
BLI BLACK SUPERIOR 132Y
KIMLAKE SHEILA ANN 807T
D: BLI AFFAIR 315A
R PLUS 7167T
BLI WILDROSE 947W
BLI SHANEL

BW	WW	YW	CE	MCE	MW	M
102	746	-	-	-	-	-
3.9	83.6	130.5	6.4	3.7	66.7	24.9

The 3rd member of the Uppercut bulls and one that gets better by the day. Tremendous lines, big sweeping rib, square hip, wide topped and tremendously attractive. Mothered by one of the features from our 2018 Female sale and she did not disappoint. Get some color on those calves and make sure the buyers know they are Simmental. This is one that will be easy to find sale day. Part of the display team at Canadian Bull Congress where he was very popular.



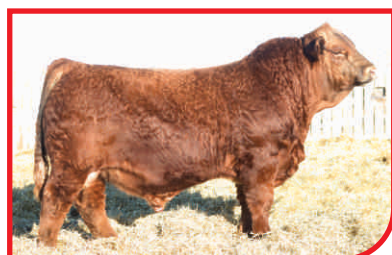
BLI GRENADE 911G - LOT 63



LFE RS MISS ARNOLD 609U
GRANDDAM OF LOT 63



BLI AFFAIR 315A - DAM OF LOT 64



BLI COCAINE 503C
MATERNAL BROTHER TO LOT 64



BLI KAL KNOCKOUT 9G - LOT 64



BLI ALLIANCE DARK NIGHT - LOT 65



RF CAPTAIN BLACK 430B - SIRE OF LOTS 65 & 66



BLI ALLIANCE BLACK ACE - LOT 66

BLI ALLIANCE DARK NIGHT

PUREBRED BLACK / POLLED ET
CA-BPTG1275805 ALL 5G 06 JANUARY 2019

HARVIE JDF WALLBANGER111X
SVS CAPTAIN MORGAN 11Z
SUNNYVALLEY BLK JENNA 88U
S: RF CAPTAIN BLACK 430B
KENCO/MF POWERLINE 204L
TLG FLIRTIN WITH YOU
CHUB'S FLIRT 6P

3C W/C RIGHT TRACK W9462
W/C WIDE TRACK 694Y
MISS WERNING 694S
D: ALLIANCE BLACK SARAH
SS/PRS HIGH VOLTAGE 244X
BOUNDARY SARAH 7C
BOUNDARY SARAH 124A

BW	WW	YW	CE	MCE	MW	M
101	-	-	-	-	-	-
2.8	82.7	125.5	9.3	4.0	53.4	12.0



BLI ALLIANCE BLACK ACE

PUREBRED BLACK / POLLED ET
CA-BPTG1275806 ALL 9G 11 JANUARY 2019

HARVIE JDF WALLBANGER111X
SVS CAPTAIN MORGAN 11Z
SUNNYVALLEY BLK JENNA 88U
S: RF CAPTAIN BLACK 430B
KENCO/MF POWERLINE 204L
TLG FLIRTIN WITH YOU
CHUB'S FLIRT 6P

3C W/C RIGHT TRACK W9462
W/C WIDE TRACK 694Y
MISS WERNING 694S
D: ALLIANCE BLACK SARAH
SS/PRS HIGH VOLTAGE 244X
BOUNDARY SARAH 7C
BOUNDARY SARAH 124A

BW	WW	YW	CE	MCE	MW	M
112	-	-	-	-	-	-
2.3	80.0	122.5	9.8	4.4	56.4	16.4



BLI Alliance Dark Night (ALL 5G) and BLI Alliance Black Ace (ALL 9G)

Two powerful full ET brothers out of the tremendous producing Captain Black and the Widetrack donor female. These two long bodied, big topped, big boned, massive centered, loose made bulls were campaigned last fall at Agribition both having strong showings in very tough classes. This was a tremendous flush with quality throughout the bulls and females. The maternal grand dam was junior champion female as a bred heifer at Expo Beouf and continues to be a strong producer. I change my mind on a daily basis on which one I prefer so make sure you are there to evaluate both of these stout made bulls and on March 17th. Own one or take them both home either way these studs will make a major impact on a breeding program.

BLI KAL CAPTAIN OLYMPIAN 7G

POLLED BLACK BLAZE

CA-BPG1286092 LIBY 7G 14 FEBRUARY 2019



HART ALL IN W382
SPRINGCREEK ALL IN 155Y
SPRINGCREEK BLK TESS 73T
S: SPRINGCREEK OLYMPIAN 66A
RCC/TCF LINE DRIVE M181
SPRINGCREEK LINNE 33R
SPRINGCREEK JOSIE 58N

SVS CAPTAIN MORGAN 11Z
RF CAPTAIN BLACK 430B
TLG FLIRTIN WITH YOU
D: PHEASANTDALE BLK DAKOTA 75D
TNT DYNAMITE BLACK L137
PHEASANTDALE BLK DYNA 12T
NOREMAC MISS LCL 72N

BW	WW	YW	CE	MCE	MW	M
90	730	-	-	-	-	-
3.8	78.9	113.4	7.0	4.9	58.3	18.8

7G offers some of the breed giants in his pedigree, from a notable AI sire to the great Captain Morgan and one of the most impressive bulls to add muscle and do ability to his progeny, Dynamite Black. Once again, a moderate birth weight on this long spined, big footed herd bull. Extra hairy and soft sided this bull will add some scale and length to a set of calves and there is payweight in length. An excellent option for a set of British based cows.



BLI KAL PHOENIX 5G

HOMO POLLED BY PEDIGREE / BLACK

CA-BPG1286086 LIBY 5G 07 FEBRUARY 2019



TNT TOP GUN R244
LFE VIPER 455U
LFE CHARO 56K
S: NCB COBRA 47Y
CNS DREAM ON L186
NCB MISS DREAM 22T
NUG SANDY 506R

LFE GOTHAM 819Y
LFE THE RIDDLER 323B
LFE BS CHARO 23Y
D: BLI LADY RIDDLER 644D
SNIDER'S XXL 1Y
CRM/BLI ARIZONA 366A
CRMS 320X

BW	WW	YW	CE	MCE	MW	M
93	667	-	-	-	-	-
2.5	75.6	114.9	7.9	6.0	60.3	22.5

The black offering this year maybe the strongest we have brought forward and this direct son of Cobra sure helps maintain the high quality. Moderate birth weight, sound structured, attractive made and lose hided. 5G is mothered by a perfect uddered Riddler daughter that was a \$9000 heifer calf in Red and Black and we keep seeing how well they produce. Cobra offers a genetic outcross for our repeat clientele in a very proven high quality package. The Cobra females are some of the best in the breed and Cobra continues to surpass expectations with his sons and grandsons being some of the top herd bulls in the nation.



BLI KAL HINDSIGHT 4G

POLLED / BLACK STAR FACE

CA-BPG1287163 LIBY 4G 31 JANUARY 2019



ELLINGSON LEGACY M229
MR NLC UPGRADE U8676
MS NLC MOJO S6119 B
S: MR CCF VISION
CNS DREAM ON L186
GCF MISS ELSA
SS MISS BREAK

LFE STRAIT UP 454W
WFL ABSOLUTE 51Y
WFL MS BLACK FLASH 8068U
D: WILLOWDALE BLK TOPGUN 11E
KWA FLYF RED MOUNTAIN 16Z
WILLOWDALE RED TOPGUN 47C
WILLOWDALE MS TOPGUN 15X

BW	WW	YW	CE	MCE	MW	M
82	763	-	-	-	-	-
0.4	80.4	119.5	12.3	6.0	59.2	19.0

Another outcross pedigree on offer with this own sound of Vision with a small birth weight and big time performance. This sound made, easy moving bull is stout hipped and deep sided. You have to appreciate the flexibility he offers in such an attractive package with plenty of muscle and extension through his front third. Mothered by a first calf heifer that has done a tremendous job. We love the productiveness of young females like this and makes us excited for the future.

BLI G - FORCE 923G

HOMO POLLED BY PEDIGREE AND TESTED HOMO BLACK
TWIN CA-BPG1300684 BLI 923G 01 MARCH 2019



WS PILGRIM H182U
PROFIT
WAGR PANARAMA 204Z
S: R PLUS CAPITAL 6233D
TWIN-CHIEF PRINCE 203P
MISS R PLUS 7086T
WFL MS 933J BLACK 5031R

WHEATLAND BULL 680S
LITTLE MAN'S EYECANDY103Z
LFE CANDY KISSES 39S
D: SNIDER'S CHARMED
STF STARQUEST N114
BBN MISS STAR 38S
MCC STACY 103H

BW	WW	YW	CE	MCE	MW	M
78	-	-	-	-	-	-
4.4	65.1	95.7	5.0	1.7	54.8	22.2

Wicked haired and attractive made Profit grandson from an elite female that was shown at Farmfair as a two year old pair. 923G's dam can produce as she has one bull working for Sunnybend colony, one daughter in our herd and another daughter at Blazin J Inc. 923G was a twin and his full brother is going to work for Brian Geis. 923G is so sound on the move with tons of flex and has the look that will attract the steer buyers and leave tremendous replacement females in the herd.



BLI GRANITE 926G

HOMO POLLED / HETERO BLACK
CA-BPG1304086 BLI 926G 04 MARCH 2019



WS PILGRIM H182U
PROFIT
WAGR PANARAMA 204Z
S: R PLUS CAPITAL 6233D
TWIN-CHIEF PRINCE 203P
MISS R PLUS 7086T
WFL MS 933J BLACK 5031R

R PLUS RELOAD 2006Z
R PLUS HITMAN 4194B
MISS R PLUS 79X
D: BLI ELIZABETH 622D
BLI ZEUS 208Z
BLI BROOKE 456B
BLI NAOMI

BW	WW	YW	CE	MCE	MW	M
90	-	-	-	-	-	-
4.7	67.8	96.3	5.5	2.0	53.7	19.9

926G is the final black bull in the offering and very similar in type and kind to his brother 923G. Mothered by a tremendous blazed face Hitman daughter that stems from one of our very old cow families and has been a mainstay in our program for a reason. Granite is super soft made, big footed and long bodied and only a March born that has the potential to sire an outstanding group of progeny.



FARMAIR 2018



BLI GREAT FALLS 914G

POLLED / RED ET

UNR1303866 BLI 914G 16 FEBRUARY 2019

R PLUS HARD ROCK 145X
R PLUS RELOAD 2006Z
IPU RED BARONESS 1T
S: R PLUS HITMAN 4194B
S-PAW BLK SHOW OFF 5S
MISS R PLUS 79X
MISS R PLUS 6141S

R PLUS BLACKEDGE
R PLUS REDGE 8018U
MISS R PLUS 3158N
D: MISS R PLUS 59X
R PLUS KODIAK 4200P
KOP MS KODIAK 136U
KOP MS JUSTINE 46L

BW	WW	YW	CE	MCE	MW	M
110	-	-	-	-	-	-
3.1	66.2	94.0	6.7	2.1	51.3	18.3

Perhaps the favorite red bull we have offered from the Hitman x 59X mating and there has been a few of them. You have to appreciate the softness of 914G and with that the overall dimension and substance that he offers is outstanding. Tie that into his structural integrity and the flex in his joints and large well-made foot I feel this bull has tremendous herd changing potential. Honestly if we didn't have half of our cowherd that are Hitman daughters this bull would not be available for sale. Do not miss a real honest herd bull on March 17th he will not be hard to find. Sisters working at Rancier Farms, Blazin J Inc, and 3 brothers have been sold through this very sale to some top programs.



BLI GREAT FALLS 914G - LOT 72



BLI SPECIAL 207Z - DAM TO LOT 73



BLI ALLIANCE POLLED ROUGH NECK

POLLED / RED BLAZE

CA-PG1259309 ALL 24F 04 NOVEMBER 2018

FBF1 COMBUSTIBLE
FBF1/SF IGNITION
FBF1 GORGEOUS LADY
S: ALLIANCE BLACK EXPLOSION
DESTINY BUCKEYE
JETSTREAM BRIGHT LITE 10B
FARL LIGHT DREAMS

EMSIG
EMPEROR
351
D: BLI SPECIAL 207Z
SHAWACRES JAHARI 50L
WYVERN RHEOLA FF
WYVERN RUTH

BW	WW	YW	CE	MCE	MW	M
96	-	-	-	-	-	-
3.2	57.0	75.2	7.6	0.8	51.9	23.4

This bull truly demonstrates the strength and opportunities that the Simmental breed provides. The blend of great Fleckvieh genetics with some top black genetics have produced this big, powerful, red blazed face stud. The extra age gives you the opportunity of the additional maturity and scale. The dam 207Z is no stranger to producing quality from her sons to grandsons she does it consistently and has put some outstanding productive daughters into the CSA herdbook as well. One daughter raised one of the top selling polled Fleckvieh females in the nation last fall for Alliance Simmentals that sold to Sunny Valley and Canadian Donors. 24F is big boned, long bodied bull that has the potential to make a very significant impact on a herd.



BLI ALL CASTLE 504C
MATERNAL BROTHER TO LOT 73



BLI ALLIANCE POLLED ROUGH NECK - LOT 73



BLI ALLIANCE HONEY'S RAMBLER

POLLED / RED

CA-PG1275792 ALL 11G 12 JANUARY 2019



CNS DREAM ON L186
WS PILGRIM H182U
WS MARLA 276M
S: RUST HENN RAMBLER 6003
PVF PREFERRED EDGE 717G
KAPPES SADIE M166
KAPPES STOP LIGHT J35

LRS RED REALITY 33J
WHEATLAND'S INFERNO 325N
WHEATLAND LADY 902J
D: RVCC RED HONEY DEW 02D
OLF OTIS Y43
RVCC HONEY BOO BOO 04B
BAR L7 MISS HONEY 45U-48Z

BW	WW	YW	CE	MCE	MW	M
90	-	-	-	-	-	-
0.3	66.6	95.3	12.8	7.0	52.8	19.5

Talk about cow power and elite genetics, 11G offers both in a moderate birth weight, smooth made, attractive package. Read through his pedigree and you find some of the most influential names in the red and black business. The combination of the genetic quality and the phenotype that 11G displays make him a quality option for both calving ease and tremendous maternal qualities. 11G ranks in the top 5% of the breed for calving ease. 11G is an outcross pedigree for our past clients and darn sure does sacrifice any quality.

BLI KAL SHERIFFSON 3G

POLLED / RED

CA-PG1287159 LIBY 3G 30 JANUARY 2019



BMD RED WALKING TALL 13W
KUNTZ MARSHALL 12Y
TIMBER WENDY 3W
S: KUNTZ SHERIFF 8A
MUIRHEAD'S KOSMO 27N
PEACOCK'S LIL NETTIE 23Y
MUIRHEAD NETTIE 5W

R PLUS RELOAD 2006Z
R PLUS HITMAN 4194B
MISS R PLUS 79X
D: BLI FORTUNE 710E
LFE BIG DEAL 350R
CRMS 86 W
CRMS 66 M

BW	WW	YW	CE	MCE	MW	M
81	620	-	-	-	-	-
-0.8	62.6	92.1	13.5	7.4	56.4	25.1

A direct Sheriff son with a small birthweight and built to be a calving ease dream. Small headed, smooth shoulder with moderate bone and enough growth to be more than just a "heifer bull". Dam was purchased through our production sale in 2018 and laid down a beautiful udder with perfect teat size and placement. Again, the strength of Hitman comes through in his daughter's production capabilities.



BLI KAL SHERIFFSON 3G
LOT 75



BLI FORTUNE 710E
DAM OF LOT 75

BLI KAL COBRASON 2G

POLLED / RED

CA-PG1287161 LIBY 2G 26 JANUARY 2019



TNT TOP GUN R244
LFE VIPER 455U
LFE CHARO 56K
S: NCB COBRA 47Y
CNS DREAM ON L186
NCB MISS DREAM 22T
NUG SANDY 506R

KUNTZ MARSHALL 12Y
KUNTZ SHERIFF 8A
PEACOCK'S LIL NETTIE 23Y
D: WILLOWDALE RED NEAT 67E
STR KING ARTHUR N310
WILLOWDALE NEAT 17Z
WILLOWDALE NEAT 53N

BW	WW	YW	CE	MCE	MW	M
93	704	-	-	-	-	-
1.8	78.8	119.1	11.4	7.1	64.2	24.8

2G is a red direct son of the great breeding Cobra and we really like what he brings to the table. Big middle, wide top, excellent hair coat and real correct foot and leg structure. Mothered by a first calf heifer that did an excellent job in her first attempt. Double bred calving ease genetics top and bottom with the breed lead Sheriff on the bottom side and Cobra being a trait leader for calving ease as well. Add some additional performance with this awesome calving ease option red herd bull.



BLI KAL LITTLE RED 1G

RED / POLLED (SMALL SCABS)
CA-PG1287166 LIBY 1G 23 JANUARY 2019



KUNTZ MARSHALL 12Y
KUNTZ SHERIFF 8A
PEACOCK'S LIL NETTIE 23Y

S: BLCC MR SHERIFF 25C
R PLUS 110X

BLCC MISS SLEDGE 165A
BLCC MISS TEDDY 229U

KOP CROSBY 137W
KOP CROSBYSON 3Z
KOP MS TRACKER 192W

D: LAZY BAR B ALANNA 10E
BOYNECREST BULLSEYE 89X
BOYNECREST MISS 58X 55Z
BOYNECREST MISS 110S 58X

BW	WW	YW	CE	MCE	MW	M
81	625	-	-	-	-	-
0.3	63.1	94.9	10.4	7.2	56.8	25.2

Wrapping up the offering is another light birthweight highly maternal individual that is as dark red as you can make one. When you combine the great calving ease of Sheriff with the cow power and performance from Crosby it is a pretty powerful combination. 1G came in dam from a purchase from the very good Lazy Bar B program that is known for sound made productive females and easy doing durable ranch bulls. 1G is a sound made, big nutted herd bull that is an excellent calving ease option for the heifer pen.



BLI KAL LAW SNAKE 15G

POLLED / RED
CA-PG1286081 LIBY 15G 25 MARCH 2019



NCB COBRA 47Y
DEEG MR 4A
COL D BAR C GLOW 949W
S: AEDJ COBRA 140D
JJJS RED LABEL 9T
AEDJ MS MS LABEL 93Y
AEDJ MS COOL 58P

KUNTZ MARSHALL 12Y
KUNTZ SHERIFF 8A
PEACOCK'S LIL NETTIE 23Y
D: ERIXON LADY 32D
ERIXON GAME ON 42Z
ERIXON LADY 3B
ERIXON LADY 65Y

BW	WW	YW	CE	MCE	MW	M
94	736	-	-	-	-	-
1.1	71.8	108.2	10.5	7.3	61.3	25.4

Here is an end of March bull that has just continued to impress with his growth and performance and the way he has caught up to his older contemporaries. A pedigree loaded with calving ease, breed leading genetics once again with Cobra and Sheriff stacked on top of each other. Smooth made, wide topped, tons of hair and sound on the move and at the ground with a very moderate birthweight.

Open Heifers

BLI PARIS 920G

POLLED / BLACK PUREBRED HEIFER
CA-BPG1300678 BLI 920G 21 FEBRUARY 2019



R PLUS HARD ROCK 145X
R PLUS RELOAD 2006Z
IPU RED BARONESS 1T
S: R PLUS HITMAN 4194B
S-PAW BLK SHOW OFF 5S
MISS R PLUS 79X
MISS R PLUS 6141S

LFE THE DARK NIGHT 350U
LFE BS LEWIS 391A
LFE BS FIRSTBASE 36X
D: CRMS 487 D
SNIDER'S XXL 1Y
CRMS 417 B
CRMS 340 Y

BW	WW	YW	CE	MCE	MW	M
102	-	-	-	-	-	-
3.9	74.3	108.2	7.3	3.1	55.2	18.0

BLI Paris 920G is very refined fronted, extended female. The Hitman daughters have been making great cows with excellent udders, good footed and very productive. This heavy haired sound made female has some excellent potential.



R PLUS HITMAN 4194B - SIRE OF LOT 79



CRM BLI BARTENDER 392B - GRANDSIRE OF LOT 80

BLI ESSENCE 929G

POLLED / BLACK PUREBRED HEIFER
CA-BPG1300676 BLI 929G 10 MARCH 2019



FBF1 COMBUSTIBLE
FBF1/SF IGNITION
FBF1 GORGEOUS LADY
S: ALLIANCE BLACK DETONATOR
DESTINY BUCKEYE
JETSTREAM BRIGHT LITE 10B
FARL LIGHT DREAMS

SNIDER'S XXL 1Y
CRM BLI BARTENDER 392B
CRMS FANCY BLACK 356 Y
D: IPU MS. BARBARA 103E
IPU RED WESTERN 49X
IPU MS. RED WESTERN 94A
IPU MS. RED ESSENCE 128Y

BW	WW	YW	CE	MCE	MW	M
80	-	-	-	-	-	-
2.5	61.1	87.5	8.2	2.2	50.1	19.5

BLI Essence 929G is from the famous Essence cow family in the LaBatte program. 929G's mother came to us out of the LaBatte bull sale and is sired by the \$26,000 Bartender bull that did a nice job for LaBatte and Circle 7. Long made and very feminine 929G will have a gorgeous udder just like her dam and offers a lot of different mating possibilities.

BLI BOWRING 927G

RED / POLLED PUREBRED
CA-PG1300677 BLI 927G 05 MARCH 2019



WS PILGRIM H182U
PROFIT
WAGR PANARAMA 204Z
S: R PLUS CAPITAL 6233D
TWIN-CHIEF PRINCE 203P
MISS R PLUS 7086T
WFL MS 933J BLACK 5031R

R PLUS RELOAD 2006Z
R PLUS HITMAN 4194B
MISS R PLUS 79X
D: CRMS 390 D
LFE BIG DEAL 350R
CRMS 95 Y
CRMS NATINA 48 N

BW	WW	YW	CE	MCE	MW	M
88	-	-	-	-	-	-
4.2	67.1	95.9	6.8	3.3	52.3	18.7

BLI Bowring 927G is my favorite heifer in the sale with a massive rib and so soft sided. Excellent hair and length of spine. I really like the flex she offers in her joints and the way her foot hits the ground square. 927G has been one of the favorites since spring and has continued to develop well. Mothered by a nice uddered Hitman daughter that we almost lost last spring prior to calving when she was cast out in the field. Thankfully we found her in time and she produced this female with tons of future.



BLI BOWRING 927G
LOT 81



BLI JOY 919G
MATERNAL SISTER TO LOT 81

BLI CHARITY 912G

RED / POLLED PUREBRED
CA-PG1300675 BLI 912G 15 FEBRUARY 2019



LFE MR LEWIS 514N
LFE STRAIT UP 454W
LFE RS AMBER 216T
S: WFL ABSOLUTE 51Y
R PLUS BLACKEDGE
WFL MS BLACK FLASH 8068U
WFL MS RED FLASH 136P

R PLUS RELOAD 2006Z
R PLUS HITMAN 4194B
MISS R PLUS 79X
D: BLI CHARITY 703E
KOP REVOLVER 116Z
BLI BREE 424B
BLI WILMA 938W

BW	WW	YW	CE	MCE	MW	M
82	-	-	-	-	-	-
2.2	71.3	104.2	9.0	2.7	56.4	20.7

BLI Charity 912G stems from a very old cow family here and blends some older genetics with proven calving ease and maternal abilities of Absolute. The Absolute females make wonderful cows that are productive and built to last. 912G is a moderate framed, feminine female with good hair and sound footed, from a proven productive cow family.



BLI BREE 424B
GRANDDAM OF LOT 82



WFL ABSOLUTE 51Y
SIRE OF LOT 82

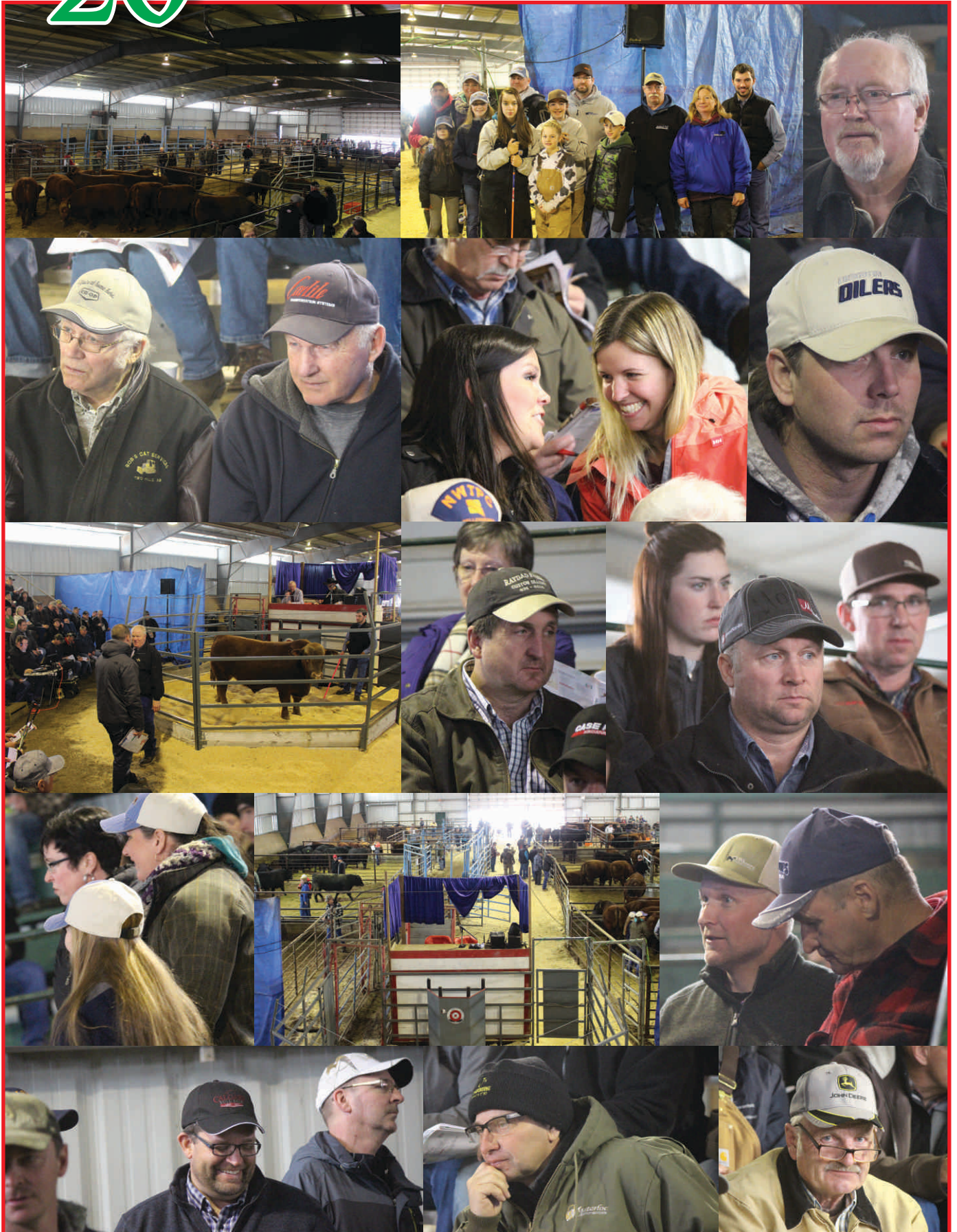
20 YEARS FOR THE ON TARGET SALE!



20 YEARS FOR THE ON TARGET SALE!



20 YEARS FOR THE ON TARGET SALE!



*We would like to thank the local businesses we deal with for their generosity.
Your support is greatly appreciated!*

CO-OP **Pembina West Co-op**
Box 4040, 4903 49 St
Barrhead, AB T7N 1A1



Sabrina Hopp
Feed & Ag Manager
Home Centre

Business 780.674.2201
Ext. 307
Cell
Other
Ext.
Fax 780.674.5598

www.pembinawestco-op.crs feed@pwcoop.ca

 **Canadian Farm Insurance Corp.**

Phone: 780-447-3276
Fax: 780-733-7724
Direct: 780-733-7715
Cell: 780-318-3636


MONICA CZECH

302, 13220 St. Albert Trail NW, Edmonton, AB T5L 4W1
mczech@cdnfarmins.com www.cdnfarmins.com

Livestock Insurance

**THANK YOU TO MONICA CZECH FROM
CANADIAN FARM INSURANCE FOR SUPPLYING
THE COFFEE AND DONUTS!**

RAYDAD FARMS
Custom Silaging



RAYMOND MARQUETTE
Ph: 780-674-4556
Cell: 780-307-4097
RR#1 WESTLOCK, AB T7P 2P9

Justin Grynke
Owner/ Manager

Fountain Tire
5811 - 49 Street
Barrhead, AB T7N 1A5

justin.grynke@fountaintire.com
www.fountaintire.com

Phone **780.674.6151**
Fax 780.674.2800

 **GOODYEAR** 

 **GRIZZLY TRAIL
MOTORS**

Chevrolet • Buick • GMC

6201 - 49 Street, Box 4497, Barrhead, Alberta T7N 1A4

JEFF BEGERT
Parts Manager
Email: jbegert@grizzlytrail.com

Bus: 780-674-2236
Fax: 780-674-4657

 **FL**


Fluet Landon Accounting Inc.


Lisa Landon, BBA
Partner

Ph: 780-674-2436
F: 780-674-3425
E: lisa@fluetlandon.ca

5020 Elevator Road
Box 4435
Barrhead, AB T7N 1A3

Pedigreed growers of Barley & Oats

 **ANDERSON SEED GROWERS**



Ken or Evelyn Anderson
RR 1
Barrhead, AB
T7N 1N2

Phone: 780 674 5670
Fax: 780 674 6612
Email: asgseed@xplornet.com

Meet our Agriculture Services Team

We are dedicated to helping you achieve your business goals and creating a flexible and customized banking solution that is right for your farming operation.



Denise Craig
Account Manager
Barrhead & Westlock and surrounding communities
780-674-2216 Ext. 310
denise.craig@td.com



Chelsie Dykstra
Account Manager
Barrhead & Westlock and surrounding communities
780-674-2216 Ext. 305
Chelsie.Dykstra@td.com



Raina Mallock
Account Manager Small Business
Barrhead & Westlock and surrounding communities
780-674-2216 Ext. 301
Raina.Mallock@td.com



Chelsea Markowski
Account Manager Small Business
Barrhead & Westlock and surrounding communities
780-674-2216 Ext. 300
Chelsea.Markowski@td.com



Ready
for you



* The TD logo and other trade-marks are the property of The Toronto-Dominion Bank.

M05336 (11/18)

Marquette Corral Cleaning



780-307-7152
Track hoe
Wheel loader

FRESON BROS.

www.freson.com

Aaron Coutts
Store Manager

PH: 780-674-2011
FAX: 780-674-3556

ACOUTTS@FRESON.COM

5020 - 49 STREET
BARRHEAD, AB, T7N 1G4

WELCOME TO FRESON BROS.
WELCOME HOME.

5 YEAR WARRANTY

RESIDENTIAL • COMMERCIAL
INDUSTRIAL

Barr Construction (1978) Ltd.
Box 4217
BARRHEAD, ALBERTA T7N 1A2

barr02@telus.net
Jim Gottschalk

R2000

BUS: 780-674-2194
RES: 780-674-2912
FAX: 780-674-6966

BARRHEAD VETERINARY CLINIC

BARRHEAD VETERINARY CLINIC

Box 28, Site 11, RR#1
60006 RR 34
Barrhead, Alberta
T7N 1N2

Dr. Iliya S. Belosevic
B.Sc., B.A., D.V.M.

Phone: 780-674-5335
Fax: 780-674-2679
Email: barrheadvet@mcsnet.ca

BUS.: (780) 674-6199
RES.: (780) 674-4361

FAX: (780) 674-2917

LFA BARRHEAD

PETROLEUM & LUBES
CARDLOCK & RETAIL PUMPS

C/O ROD & LORRAINE JOHNSON

BOX 4515
6102 - 48 ST.

BARRHEAD, ALBERTA
T7N 1A4

Custom Corral Cleaning

Tim Semler (780) 307-5053 Po Box 4296
Barrhead AB T7N 1A3




K & D Custom Meats LTD

Specializing in Farm & Wild Game Processing,
Custom Cutting, Custom Sausage, Jerky, &
Smoked Goods

Location: 59109 Range Road 35
Mailing Address: R.R#3 Barrhead, Alberta, T7N-1N4
Phone: 780-284-3072 or 780-305-7511
E-Mail: KandDcustommeatsltd@gmail.com
Facebook: K & D Custom Meats LTD



Steve & Connie Hodgetts

SCH TRAILERS

Sales of: RR #2 Barrhead, AB

- Aluminum Sled/ATV/UTV Trailers • Flat Deck/Car/Stock & Cargo Trailers
- Aluminum Truck Decks & Custom Order Trailers

Ph/Fax: (780) 674-5550 Website: www.schtrailers.com



Your Animal's First Choice

BARR-NORTH

VETERINARY SERVICES LTD.

**Dr. Cerah Bowyer
Dr. Chris Bowyer
Dr. Tanya Knittig
Dr. Derk Pierik
Dr. Jason Schonknecht**

780-674-2100
24 Hour Emergency Service

Box 4279 6302 - 49 st.
Barrhead, AB T7N 1A3
Fax: 780-674-2157 | barrnorthvet.com



OBI LIVESTOCK LTD.

PUREBRED CATTLE SALES MANAGEMENT TEAM

28 Glendale BVLD, Red Deer, AB • T4P 2P3
Mark Holowaychuk - 403-896-4990
Roger Peters - 403-828-9815



403-896-4990 • o.b.i@shaw.ca • www.cattlemanagement.ca

KESLL WELDING & INSPECTION INC



Kenneth C Emery
kcemery22@gmail.com

51120 Range Road 224,
Sherwood Park, AB T8C 1H1

780 914-1479



BULLSEYE

Doug Roxburgh
Beef Consultant
Cell: 1-403-392-4541
doug.roxburgh@bullseyefeeds.ca

Head Office
126 E Canal Garden
Strathmore, AB T1P 1Y4

www.bullseyefeeds.ca



Creating more value together.

- Grower/Finisher Supplements • Bull Rations
- Creep Feeds • Hi-Range™ Mineral Program

Shur-Gain Trow Nutrition Sales Nutritionists

Justin Rosadiuk 780.379.0141
Marius Labentowicz 780.975.7743

9415 - 109 Street
Westlock, AB
780-349-5886



trow nutrition
a Nutreco company





RED CINDER ROCKETS 329G - LOT 4



RED DWAJO PETERBILT 66G - LOT 48



BLI KAL KNOCKOUT 9G - LOT 64

TERMS & CONDITIONS:

- All Cattle will sell under the standard terms and conditions set forth by the Canadian Angus and Simmental Associations.
- Terms - The terms of the sale are cash or cheque. All monies are in Canadian funds. The right of property shall not pass until after settlement has been made; payable at par to OBI. All settlements must be made with the clerk before any cattle will be released.
- Disputes - Every animal sells to the highest bidder and in cases of disputes, the auctioneer's decision will be final. Announcements from the auction block will take precedence over the printed matter in the catalogue.
- Liabilities - All persons attend the sale at their own risk. The seller, facility owner and sale manager assume no liability legal or otherwise, for any accidents that occur. It is understood that OBI is acting only as a medium between buyer and seller and is not responsible for any failure on the part of either party to live up to his obligations. Neither does OBI assume any financial obligations to collect or enforce the collection of any monies between parties and any legal action that may in exceptional cases be taken must be between the buyer and the seller.
- Insurance - Each animal becomes the risk of the purchase as soon as sold, so we do recommend insurance.
- Sale Cattle - All cattle will sell according to the Lot Number tags in the catalogue.
- Registration Papers - All animals selling are registered and will be transferred only upon full payment.

CONCERNS – PLEASE CALL OBI FOR ANY CONCERNS THAT YOU HAVE AND WE WILL BE ABLE TO HELP YOU ACCORDINGLY.



OBI LIVESTOCK LTD.
28 GLENDALE BLVD
RED DEER, AB T4P 2P3



RETURN POSTAGE GUARANTEED
PORT DE RETOUR GARANTI

ON TARGET

20TH ANNUAL
BULL & FEMALE SALE

